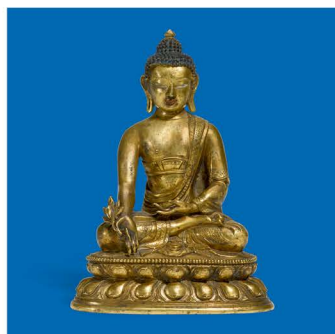
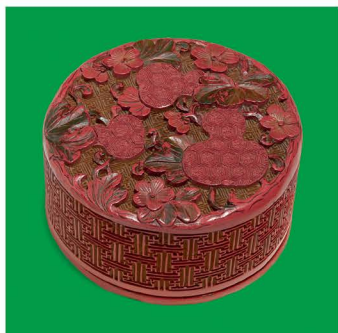


Sotheby's

EST. 1744



ST GEORGE STREET SALE

ASIAN ART

LONDON | 17 MAY 2019





ST GEORGE STREET SALE

ASIAN ART

IMPORTANT NOTICE TO BUYERS

DEPOSIT AND OTHER PRE-REGISTRATION REQUIREMENTS

給予買家的重要告示

訂金及其他預先登記手續

Regardless of the low pre-sale estimate for the lot, Sotheby's reserves the right to request from prospective bidders to complete the pre-registration application form and to pay to Sotheby's a deposit of GBP 20,000 or such other higher amount as may be determined by Sotheby's and any financial references, guarantees and/or such other security as Sotheby's may require in its absolute discretion, as security for the bid.

Sotheby's has no obligation to accept any pre-registration application. Sotheby's decision in this regard shall be final.

Clients are requested to contact Sotheby's at least 3 working days prior to the relevant sale in order to allow Sotheby's to process the pre-registration, and to bear in mind that Sotheby's is unable to obtain financial references over weekends or public holidays. Any required deposits shall be paid in Pound Sterling by way of wire transfer or debit/credit card (clients must present their cards in person to Sotheby's).

If a client is not successful on any lot, Sotheby's will arrange for a refund (subject to any right of set off) of the deposit amount paid by such client without interest within 14 working days of the date of the sale. Any exchange losses or fees associated with the refund shall be borne by the client.

Clients may not be allowed to register and bid on a lot if Sotheby's fails to receive a completed pre-registration application form or any financial references, guarantees, deposits or other security as requested by Sotheby's or if the pre-registration application is not accepted by Sotheby's.

不論拍賣品估計之預售低價為何，蘇富比有權要求準競投人填寫預先登記申請表及交付蘇富比20,000英磅或其他更大金額的訂金及任何財務狀況證明，擔保或/及其他由蘇富比全權酌情決定要求的抵押作為參加蘇富比競投的保障。

蘇富比並無責任接受任何預先登記申請。蘇富比對此有最終的決定權。

顧客須於有關的拍賣日前不少於3個工作天聯絡蘇富比進行預先登記。顧客必須緊記蘇富比無法於假日或週末取得財務狀況證明。任何所需訂金必須以電匯或借記卡/信用卡以英磅付款（顧客必須親身交付蘇富比其借記卡/信用卡）。

如顧客未能投得任何拍賣品，蘇富比將安排於有關出售日後十四個工作天內退回該顧客已付的訂金（不包含利息）。蘇富比可用訂金抵銷該顧客的任何欠款。任何涉及退款的兌換交易損失或費用，將由顧客承擔。

如蘇富比未能收到顧客填妥的預先登記申請表，或蘇富比要求的任何財務狀況證明，擔保，訂金或其他的抵押，或蘇富比不接受顧客提交的預先登記申請表，該等顧客可能不獲登記及不得競投拍賣品。

Sotheby's | **蘇富比**

ST GEORGE STREET SALE

ASIAN ART

AUCTION IN LONDON
17 MAY 2019
SALE L19216

SESSION ONE: 10 AM
SESSION TWO: 2 PM

**ALL EXHIBITIONS FREE
AND OPEN TO THE PUBLIC**

Saturday 11 May
12 noon-5 pm

Sunday 12 Month
12 noon-5 pm

Monday 13 Month
9 am-4.30 pm

Tuesday 14 Month
9 am-4.30 pm

Wednesday 15 Month
9 am-4.30 pm

Thursday 16 Month
9 am-4.30 pm

34-35 New Bond Street
London, W1A 2AA
+44 (0)20 7293 5000
sothebys.com

拍賣品之狀況

準買家應於拍賣前之展覽會上視察拍賣品。純為方便買家，蘇富比亦會提供拍賣品狀況報告。圖錄中未說明拍賣品之狀況則不表示該拍賣品沒有缺陷或瑕疵。請參閱圖錄之業務規則第3及4條。

Condition of Lots Prospective buyers are encouraged to inspect the property at the pre-sale exhibitions. Solely as a convenience, Sotheby's may provide condition reports. The absence of reference to the condition of a lot in the catalogue description does not imply that the lot is free from faults or imperfections. Please refer to Condition 3 of the Conditions of Business printed in this catalogue.

275
YEARS
EST. 1744

Sotheby's EST. 1744



Specialists and Auction Enquiries

For further information on lots in this auction please contact any of the specialists listed below.



Stephen Loakes
Director
+44 (0)20 7293 5571
stephen.loakes@sothebys.com



Cherrei Tian
Deputy Director
+44 (0)20 7293 6170
cherrei.tian@sothebys.com



Gordon Lo
Cataloguer
+44 (0)20 7293 5371
gordon.lo@sothebys.com

INTERNATIONAL TEAM



Nicolas Chow
*Worldwide Head and
Chairman, Chinese Works
of Art,
Chairman Asia*



Henry Howard-Sneyd
*Chairman, Asian Art,
Europe and Americas*



Julian King
*International Specialist,
Senior Director*



Carrie Li
*Senior Specialist, Asia,
Senior Director*



Dr. Caroline Schulten
*Senior Specialist,
Europe
Senior Director*



Angela McAteer
*Senior Specialist,
North America
Senior Vice-President*

SALE NUMBER

L19216 "MAGU"

BIDS DEPARTMENT

+44 (0)20 7293 5283
FAX +44 (0)20 7293 6255
bids.london@sothebys.com

Telephone bid requests should be received 24 hours prior to the sale. This service is offered for lots with a low estimate of £3,000 and above.

PRIVATE CLIENT GROUP

+44 (0)207 293 5094

EUROPE

Michael Berger-Sandhofer
m.bergersandhofer@sothebys.com
Beatriz Quiralte
beatriz.quiralte@sothebys.com

ASIA

Shu Zheng
shu.zheng@sothebys.com

INDIA & MENA

Milaap Patel
milaap.patel@sothebys.com

INDIA

Gauri Agarwal
gauri.agarwal@sothebys.com

RUSSIA & CIS

Alina Davey
alina.davey@sothebys.com
Irina Kronrod
irina.kronrod@sothebys.com
Lilija Sitnika
lilija.sitnika@sothebys.com
Maryam Kalo
maryam.kalo@sothebys.com

SALE ADMINISTRATOR

Alice Garner
alice.garner@sothebys.com
+44 (0)20 7293 6442
FAX +44 (0)20 7293 5923

POST SALE SERVICES

Kristy Robinson
Post Sale Manager
FOR PAYMENT, DELIVERY
AND COLLECTION
+44 (0)20 7293 5220
FAX +44 (0)20 7293 5910
ukpostsaleservices@sothebys.com

CATALOGUE PRICE

£25 at the gallery

FOR SUBSCRIPTIONS CALL

+44 (0)20 7293 5000
for UK & Europe
+1 212 606 7000 USA



THIS PAGE
LOT 379 (DETAIL)

Contents

3	AUCTION INFORMATION
5	SPECIALISTS AND AUCTION ENQUIRIES
8	ST GEORGE STREET SALE: LOTS 201–478
125	ABSENTEE BID FORM
127	BUYING AT AUCTION
128	EXPLANATION OF SYMBOLS VAT INFORMATION FOR BUYERS
130	CONDITIONS OF BUSINESS FOR BUYERS
132	WAREHOUSE, STORAGE, COLLECTION INFORMATION AUTHENTICITY GUARANTEE
133	IMPORTANT NOTICES GLOSSARY OF TERMS
135	INTERNATIONAL DEPARTMENTS
136	SOTHEBY'S EUROPE

SESSION ONE

LONDON
FRIDAY
17 MAY 2019
10 AM

LOTS 201-325



LET A THOUSAND FLOWERS BLOOM

A PRIVATE COLLECTION
OF SCHOLARLY WORKS OF ART

LOTS 201-266





201

201

**A CELADON JADE 'MALLOW' LIBATION CUP
LATE MING DYNASTY**

carved in the form of a mallow flower with a floral sprig in the interior, borne on intertwining leafy sprigs issuing buds forming the handle, the stone of an even celadon tone
10.1 cm, 4 in.

£ 5,000-7,000
HK\$ 52,500-73,000 US\$ 6,700-9,300

晚明 青玉葵花式洗

202

**A PALE CELADON JADE 'POMEGRANATE'
WATERPOT
QING DYNASTY, 18TH/19TH CENTURY**

naturalistically carved in high relief as two pomegranates borne on a leafy stalk, with a cricket perched to the side, the polished stone of an even pale celadon tone
9.5 cm, 3¾ in.

£ 4,000-6,000
HK\$ 41,700-62,500 US\$ 5,400-8,000

清十八十九世紀 青白玉榴開百子水盂



202

203

**A SPINACH-GREEN JADE 'LOTUS' WASHER
QING DYNASTY, 18TH CENTURY**

carved in the form of a lotus leaf with a small floral sprig in the centre, borne on leafy stems issuing lotus buds, the stone of a variegated green tone with patches of russet and dark specks
11.9 cm, 4⅝ in.

£ 6,000-8,000
HK\$ 62,500-83,500 US\$ 8,000-10,700

清十八世紀 碧玉雕荷葉式洗



203

A PALE CELADON JADE 'MELON' LIBATION CUP

YUAN/MING DYNASTY

carved in the form of a hollowed half melon with lobed sides, the handle formed from entwined leaves, tendrils and flowering stems extending to the base, the stone of an even pale celadon tone with russet inclusions
11 cm, 4 $\frac{3}{8}$ in.

£ 4,000-6,000

HK\$ 41,700-62,500 US\$ 5,400-8,000

元/明 青白玉瓜瓞綿綿盃



204



205

205

A SMALL CELADON JADE 'PERSIMMON' WASHER

QING DYNASTY, 17TH CENTURY

naturalistically carved in the form of a persimmon borne on a leafy stem, the stone of an even celadon tone
4.7 cm, 1 $\frac{7}{8}$ in.

£ 1,500-2,000

HK\$ 15,700-20,900 US\$ 2,000-2,700

清十七世紀 青玉事事如意小洗

206

A PALE CELADON JADE 'LOTUS' CUP

YUAN/MING DYNASTY

naturalistically carved as a furled lotus leaf, borne on long curling leafy and budding stems rising from the base to the rim forming the handle, the stone of an even pale celadon tone
11 cm, 4 $\frac{1}{4}$ in.

£ 8,000-12,000

HK\$ 83,500-125,000 US\$ 10,700-16,000

元/明 青白玉荷葉形盃



206

207

**AN AGATE 'PEACH' WATERPOT
QING DYNASTY, 19TH CENTURY**

naturalistically carved in the round as a hollowed peach borne on a leafy stalk, the stone of a greenish-grey colour with russet inclusions
7 cm, 2¾ in.

£ 800-1,200
HK\$ 8,400-12,500 US\$ 1,100-1,600

清十九世紀 瑪瑙桃形水盂



207

208

**A JADEITE 'PRUNUS' BOX AND COVER
QING DYNASTY, 19TH CENTURY**

the domed cover centred with a prunus flower surrounded by chrysanthemum petals, the box similarly carved, the translucent stone of an even white colour
(2)
4.9 cm, 1⅞ in.

£ 2,000-3,000
HK\$ 20,900-31,300 US\$ 2,700-4,000

清十九世紀 翠玉菊瓣形蓋盒



208

209

**A JADEITE 'MELON' WATERPOT
QING DYNASTY, 19TH CENTURY**

naturalistically carved in the round as a hollowed melon borne on a stem with vines and a large leaf, the translucent stone of a pale-green colour
8.2 cm, 3¼ in.

£ 1,000-2,000
HK\$ 10,500-20,900 US\$ 1,350-2,700

清十九世紀 翠玉瓜形水盂



209

A JADEITE 'LOTUS' WASHER AND GILT-SILVER STAND**QING DYNASTY, 19TH CENTURY**

naturalistically carved in the form of a large furled lotus leaf pad with a small conch shell on the rim, the underside with four birds perching amidst stems curling up the side issuing lotus buds and leaves, the polished stone with areas of icy pale green and bright green patches, gilt-silver stand 16.4 cm, 6½ in.

£ 15,000-20,000

HK\$ 157,000-209,000 US\$ 20,000-26,600

清十九世紀 翠玉水禽荷葉式洗



211

**A ROCK CRYSTAL 'DOUBLE-PEACH' WATERPOT
QING DYNASTY, 18TH/19TH CENTURY**

naturalistically modelled as two conjoined hollow peaches forming the waterpot with a bat on the side, borne on a leafy stem

8.4 cm, 3¼ in.

£ 2,000-3,000

HK\$ 20,900-31,300 US\$ 2,700-4,000

清十八十九世紀 水晶雙桃式水盂



211



212

212

**A YELLOW AGATE 'PEACH' WATERPOT
QING DYNASTY, 19TH CENTURY**

carved in the round as a hollowed peach accentuated with further smaller peaches borne on a leafy stem, the polished stone of rich amber-gold colour

8 cm, 3¼ in.

£ 800-1,200

HK\$ 8,400-12,500 US\$ 1,100-1,600

清十九世紀 瑪瑙桃形水盂

213

**A ROCK CRYSTAL 'LINGZHI' BRUSHREST
QING DYNASTY, 19TH CENTURY**

naturalistically carved with sprigs of *lingzhi* and leaves issuing from rocks

12.3 cm, 4⅞ in.

£ 2,000-3,000

HK\$ 20,900-31,300 US\$ 2,700-4,000

清十九世紀 水晶雕靈芝式筆擱



213

214

**A SMALL CORAL 'PHOENIX AND BAMBOO'
INCENSE HOLDER**
QING DYNASTY, 19TH CENTURY

carved in the form of a bamboo shoot with further leafy shoots and *lingzhi* around the sides, with a phoenix standing on pierced rocks
5.6 cm, 2¼ in.

• £ 600-800
HK\$ 6,300-8,400 US\$ 800-1,100

清十九世紀 珊瑚鳳凰竹節式香插



214



215

215

A RED AGATE 'BEGONIA' WASHER
QING DYNASTY, 19TH CENTURY

naturalistically carved in the form of a begonia bloom, with a leafy stem issuing additional flowers around the exterior, the polished stone of a deep orange-red colour
8.3 cm, 3¼ in.

£ 600-800
HK\$ 6,300-8,400 US\$ 800-1,100

清十九世紀 瑪瑙海棠式洗

216

**A SPINACH-GREEN JADE 'LOTUS'
RUYI SCEPTRE**
QING DYNASTY, 19TH CENTURY

the terminal carved with a gnarled branch issuing a lotus flower in the centre with a *lingzi* sprig on top, the shaft with further gnarled branches issuing lotus, the stone of a variegated green colour with russet highlights
34.3 cm, 13½ in.

£ 6,000-8,000
HK\$ 62,500-83,500 US\$ 8,000-10,700

清十九世紀 碧玉纏枝蓮紋如意



216



217

217

**A CARNELIAN AGATE 'LINGZHI' CARVING
QING DYNASTY, 18TH/19TH CENTURY**

naturalistically carved in the round as a cluster of *lingzhi* sprigs, the stone of a milky-white tone with vermillion-red highlights
9.5 cm, 3¾ in.

PROVENANCE

Spink & Son Ltd., London.

£ 2,000-3,000

HK\$ 20,900-31,300 US\$ 2,700-4,000

清十八/十九世紀 南紅瑪瑙靈芝擺件

來源

Spink & Son Ltd., 倫敦

218

**A ROSE QUARTZ 'DOUBLE PEACH' PENDANT
QING DYNASTY, 19TH CENTURY**

rendered as two peaches borne on a gnarled leafy stem, the translucent stone of a pale pink tone
5.7 cm, 2¼ in.

£ 600-800

HK\$ 6,300-8,400 US\$ 800-1,100

清十九世紀 粉晶壽桃珮



218

219

**A CORAL 'LOTUS' PLAQUE
QING DYNASTY, 19TH CENTURY**

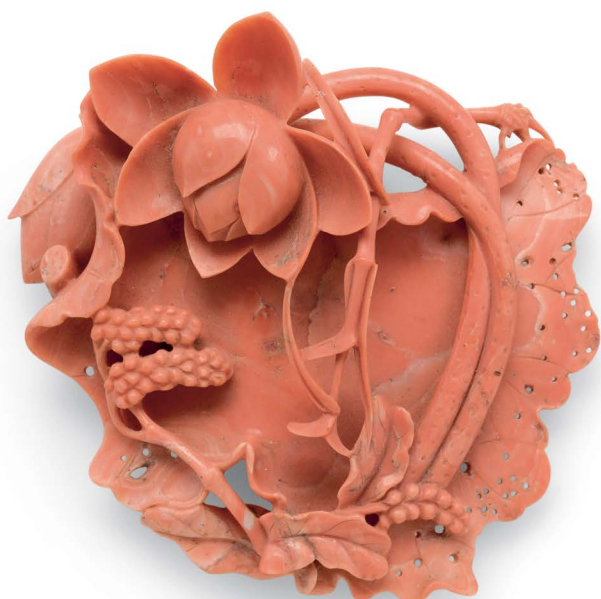
carved as a broad lotus pad, the front with curling leafy stems issuing a large lotus flower, the reverse with a lotus bud and leafy sprigs, wood stand
(2)

13 cm, 5 in.

© £ 1,000-1,500

HK\$ 10,500-15,700 US\$ 1,350-2,000

清十九世紀 珊瑚蓮紋牌飾



219

220

**AN AGATE 'PEACH AND BAT' CARVING
QING DYNASTY, 19TH CENTURY**

naturalistically carved as a peach borne on a gnarled leafy stem bearing further smaller fruit, the vermillion-red sections of the stone skilfully incorporated into the design as bats

5.3 cm, 2 $\frac{1}{8}$ in.

£ 2,000-3,000

HK\$ 20,900-31,300 US\$ 2,700-4,000

清十九世紀 瑪瑙福壽雙全把件



220

221

**AN AMBER 'GRAPE AND SQUIRREL' CARVING
QING DYNASTY, 19TH CENTURY**

carved in the round with a squirrel clambering amongst gnarled leafy vines bearing clusters of succulent round grapes, the translucent stone of attractive reddish-brown colour

6.2 cm, 2 $\frac{3}{8}$ in.

£ 800-1,200

HK\$ 8,400-12,500 US\$ 1,100-1,600

清十九世紀 琥珀松鼠葡萄紋珮



221

222

**AN AGATE 'LINGZHI' CARVING
QING DYNASTY, 18TH/19TH CENTURY**

modelled in the form of a large *lingzhi* bloom, borne on a gnarled stem forming the base and extending around the exterior of the vessel with further stems and small attendant *lingzhi* blooms, wood stand

(2)

6.7 cm, 2 $\frac{5}{8}$ in.

£ 2,000-3,000

HK\$ 20,900-31,300 US\$ 2,700-4,000

清十八十九世紀 瑪瑙靈芝擺件



222



223

223

**A CARVED AMETHYST BRUSHREST
LATE QING DYNASTY – REPUBLICAN
PERIOD**

carved with sprigs of *lingzhi* issuing from
rockwork
10.5 cm, 4 $\frac{1}{8}$ in.

£ 800-1,200
HK\$ 8,400-12,500 US\$ 1,100-1,600

晚清至民國 紫晶雕靈芝筆擱



224

224

**A LAPIS LAZULI 'DOUBLE-PEACH'
BRUSHREST
QING DYNASTY, 19TH CENTURY**

naturalistically carved with two conjoined
peaches borne on a leafy stem, the polished
stone of indigo-blue colour with lighter
inclusions and golden specks
8.5 cm, 3 $\frac{3}{8}$ in.

£ 400-600
HK\$ 4,200-6,300 US\$ 550-800

清十九世紀 青金石雙桃筆擱



225

225

**AN AGATE 'BUTTERFLY' WASHER
QING DYNASTY, 19TH CENTURY**

carved in the form of a leaf with slightly furred
edges and veins borne on a curled stem, the
interior detailed with two butterflies
9.6 cm, 3 $\frac{3}{4}$ in.

£ 800-1,200
HK\$ 8,400-12,500 US\$ 1,100-1,600

清十九世紀 瑪瑙葉形筆捺

226

**AN AGATE 'PEACH' WATERPOT
QING DYNASTY, 19TH CENTURY**

naturalistically carved in the round as a
hollowed peach borne on a leafy stalk, with a
bat near the rim, wood stand
6.5 cm, 2½ in.

£ 800-1,200
HK\$ 8,400-12,500 US\$ 1,100-1,600

清十九世紀 瑪瑙桃式水盂



226

227

**A ROCK CRYSTAL 'MAGNOLIA' VASE
QING DYNASTY, 19TH CENTURY**

the long layered petals of the upright flower
forming the walls of the hollowed vessel, curled
at the rim, supported by a gnarled leafy branch
issuing a further bloom to each side
9.8 cm, 3⅞ in.

£ 2,000-3,000
HK\$ 20,900-31,300 US\$ 2,700-4,000

清十九世紀 水晶玉蘭花插



227

228

**A PALE CEALDON JADE 'ROCKWORK'
BRUSHREST
QING DYNASTY, 18TH CENTURY**

naturalistically rendered in the form of jagged
rockwork, the polished stone of an even pale
celadon tone
9.1 cm, 3⅝ in.

PROVENANCE
Spink & Son Ltd., London.

£ 4,000-6,000
HK\$ 41,700-62,500 US\$ 5,400-8,000

清十八世紀 青白玉賞石筆山

來源
Spink & Son Ltd., 倫敦



228



229

229

**A CARVED POLYCHROME LACQUER
'POMEGRANATE' BOX AND COVER
QING DYNASTY, QIANLONG PERIOD**

of irregular section, the cover carved in varying levels of relief with two prominent pomegranates borne on a leafy stem, in ochre, red, and green, on a finely carved geometric diaper ground, the sides of the box carved in red with hexagonal floret-diaper, the interiors and base lacquered black

(2)
12 cm, 4¾ in.

£ 4,000-6,000
HK\$ 41,700-62,500 US\$ 5,400-8,000

清乾隆 剔彩石榴形蓋盒

230

**A CARVED POLYCHROME LACQUER 'DOUBLE-GOURD'
CIRCULAR BOX AND COVER
QING DYNASTY, 18TH CENTURY**

of cylindrical form, the top carved in three colours with three cinnabar lacquer double-gourds emerging from leafy stems issuing blossoms and tendrils, all against diaper ground, the deep sides carved with a geometric wan pattern, the base incised with a stylised central blossom, the interiors lacquered black

(2)
7.2 cm, 2¾ in.

£ 600-800
HK\$ 6,300-8,400 US\$ 800-1,100

清十八世紀 剔彩葫蘆紋圓蓋盒



230

231

**A CARVED CINNABAR LACQUER 'LYCHEE'
CIRCULAR BOX AND COVER
MING DYNASTY, 16TH CENTURY**

of circular form with flat upper and lower surfaces, delicately carved overall through the layers of rich cinnabar lacquer with floral blossoms and leaves, with lychees decorated in diaper patterns against a diapered ground of similar pattern, the interiors lacquered black

(2)
8 cm, 3⅜ in.

£ 4,000-6,000
HK\$ 41,700-62,500 US\$ 5,400-8,000

明十六世紀 剔紅荔枝紋蓋盒



231

**A CINNABAR LACQUER THREE-TIERED BOX
AND COVER**

MING DYNASTY, 16TH CENTURY

of quatrefoil form, the cover carved with a scholar and his acolyte beneath a lofty pine tree next to a pavilion, a further scholar seated by a desk in the pavilion, all against a diapered ground and incised undulating lines figuring the sky, the lobed tiers separated into five panels, each enclosing a different flower all supported on a splayed foot bordered by a key-fret band, the interior and base lacquered black (4)

16.6 cm, 6½ in.

£ 6,000-8,000

HK\$ 62,500-83,500 US\$ 8,000-10,700

明十六世紀 剔紅庭園高士圖三層海棠
式蓋盒



233

A SPINACH-GREEN JADE 'PHOENIX' DOUBLE VASE

QING DYNASTY, 18TH/19TH CENTURY

carved in the form of two tree trunks, one face carved in openwork with a phoenix standing on rocks and gnarled branches bearing clusters of pine needles, the other with further pine blossoms and bamboo shoots on the side, the stone of a variegated green colour with dark specks
Height 13.5 cm, 5¼ in.

£ 6,000-8,000

HK\$ 62,500-83,500 US\$ 8,000-10,700

清十八十九世紀 碧玉鳳紋竹節式花插



233

234

A SPINACH-GREEN JADE 'THREE FRIENDS OF WINTER' VASE GROUP

QING DYNASTY, 18TH/19TH CENTURY

carved in the form of a hollowed bamboo with small *lingzhi* sprigs near the base, beside a hollowed tree trunk issuing gnarled pine branches and a larger *lingzhi* head issuing gnarled braches bearing prunus blossoms, the stone of a light spinach-green colour with creamy veining and dark specks
Length 15 cm, 5⅞ in.

£ 8,000-10,000

HK\$ 83,500-105,000 US\$ 10,700-13,300

清十八十九世紀 碧玉歲寒三友花插



234

235

**A LARGE 'CHICKEN BONE' JADE 'LINGZHI'
VASE**

QING DYNASTY, 18TH CENTURY

carved in the form of a prominent *lingzhi* fungus, with further smaller *lingzhi* stems issuing from rocks winding around the body, the stone of an opaque beige tone with dark brown and russet-pink highlights
Length 15.4 cm, 6 $\frac{1}{8}$ in.

£ 8,000-12,000

HK\$ 83,500-125,000 US\$ 10,700-16,000

清十八世紀 雞骨玉靈芝形花插



235

236

**A CELADON JADE 'DEER AND CRANE' VASE
GROUP**

QING DYNASTY, 18TH CENTURY

carved in the form of three hollowed tree trunks with pine trees, bamboo stems and blossoming prunus around the exterior, one face carved in openwork with a recumbent deer resting on a rock, the reverse with a crane standing beside a pine tree branch, the stone of an even celadon tone with dark veining
15 cm, 6 in.

£ 8,000-12,000

HK\$ 83,500-125,000 US\$ 10,700-16,000

清十八世紀 青玉鶴鹿同春花插



236

237

**A RETICULATED AGATE PENDANT
QING DYNASTY, 19TH CENTURY**

intricately carved in openwork depicting a monkey crouching atop *lingzhi* sprigs on one side and a bird on the other
5.8 cm, 2¼ in.

£ 1,000-1,500
HK\$ 10,500-15,700 US\$ 1,350-2,000

清十九世紀 瑪瑙鏤雕靈猴錦
雞紋珮



237

238

**A LARGE AMETHYST 'SANDUO'
CARVING**

QING DYNASTY, 19TH CENTURY
naturalistically carved in the round resting on gnarled branches, depicting a finger citron a pomegranate and a peach forming the *sanduo* ('three abundances')
15.1 cm, 5⅞ in.

£ 8,000-12,000
HK\$ 83,500-125,000 US\$ 10,700-16,000

清十九世紀 紫晶三多擺件



238

239

**AN INSCRIBED AGATE 'LINGZHI'
CARVING**

QING DYNASTY, 19TH CENTURY
carved in openwork depicting *lingzhi* fungus amongst foliage, the russet part of the stone skilfully worked into flowers, the inscription reads *zhixian zhushou* ('may the heavenly immortal gives his birthday blessing')
4.6 cm, 1¾ in.

£ 2,000-3,000
HK\$ 20,900-31,300 US\$ 2,700-4,000

清十九世紀 瑪瑙芝仙祝壽珮



239

240

**A CRYSTAL 'BAT AND PEACH'
CARVING
QING DYNASTY, 18TH/19TH
CENTURY**

naturalistically carved as a large peach borne
on a leafy stem, with two bats perched on the
fruit

9.4 cm, 3¾ in.

£ 2,000-3,000

HK\$ 20,900-31,300 US\$ 2,700-4,000

清十八/十九世紀 水晶福壽雙
全擺件



240

241

**AN AMBER PENDANT
QING DYNASTY, 18TH/19TH
CENTURY**

carved in relief with leafy flower blossoms and a
bird perched on the side, the reverse decorated
with further flower blossoms and finger citrons
7.2 cm, 2¾ in.

£ 500-700

HK\$ 5,300-7,300 US\$ 700-950

清十八/十九世紀 琥珀花果鳥
紋珮



241

242

**AN AMETHYST 'FINGER CITRON'
CARVING
QING DYNASTY, 18TH/19TH
CENTURY**

the fruit extended to elongated sinuous 'fingers'
with two bats near the top, borne on gnarled
leafy stems suspending further smaller fruit
7.5 cm, 2⅞ in.

£ 800-1,200

HK\$ 8,400-12,500 US\$ 1,100-1,600

清十八/十九世紀 紫晶佛手



242



243

243

A PALE CELADON JADE 'CRANE AND PEACH' VASE

QING DYNASTY, 17TH/18TH CENTURY

fashioned in the form of a hollowed-out tree trunk issuing gnarled branches bearing peaches. with a crane resting near the base, the stone of an even pale celadon tone
9.5 cm, 3¾ in.

£ 4,000-6,000

HK\$ 41,700-62,500 US\$ 5,400-8,000

清十七/十八世紀 青白玉鶴壽延年花插

244

A CELADON JADE 'MAGNOLIA' CUP
QING DYNASTY, 17TH/18TH CENTURY

carved as a blossoming magnolia bloom with curled petals, stemming from a gnarled branch bearing further buds, the stone of an even celadon tone
8.7 cm, 3½ in.

£ 2,000-3,000

HK\$ 20,900-31,300 US\$ 2,700-4,000

清十七/十八世紀 青玉玉蘭花盃



244

245

A CELADON JADE 'POMEGRANATE' VASE
QING DYNASTY, 19TH CENTURY

carved in the form of a large pomegranate, detailed on the body with a small section revealing a cluster of ripe seeds and a flying bat, all borne on a gnarled branch issuing twisting and curling leaves and another smaller fruit, the stone of an even celadon tone
11.5 cm, 4½ in.

£ 4,000-6,000

HK\$ 41,700-62,500 US\$ 5,400-8,000

清十九世紀 青玉石榴形花插



245

**A LARGE CELADON JADE 'LINGZHI' VASE
QING DYNASTY, 17TH CENTURY**

carved in the form of a large *lingzhi* head, the exterior rendered in high-relief with the Eight Immortals and Shoulao carrying their respective attributes amidst swirling clouds and jagged rocks, the stone of an even celadon tone with russet highlights
20.1 cm, 7 $\frac{7}{8}$ in.

£ 40,000-60,000

HK\$ 417,000-625,000 US\$ 53,500-80,000

清十七世紀 青玉靈芝形花插





247

247

A CARVED POLYCHROME LACQUER 'LOQUAT' BOX AND COVER

QING DYNASTY, QIANLONG PERIOD

of irregular section, the cover carved in varying relief with clusters of loquat and buds borne on leafy stems, in ochre, red, and green, on a finely carved geometric diaper ground, the sides with further diaper patterns in red, the interiors and base lacquered black

(2)

7.9 cm, 3 $\frac{1}{8}$ in.

£ 1,500-2,000

HK\$ 15,700-20,900 US\$ 2,000-2,700

清乾隆 剔彩枇杷紋蓋盒

248

A HONGMU 'POMEGRANATE' BOX AND COVER

QING DYNASTY, 18TH/19TH CENTURY

of irregular section, the cover carved in varying relief with two pomegranates borne on a leafy stem

(2)

12.8 cm, 5 in.

• £ 1,500-2,000

HK\$ 15,700-20,900 US\$ 2,000-2,700

清十八十九世紀 紅木多子多福蓋盒



248

249

A CARVED CINNABAR LACQUER 'PEACH' BOX AND COVER

QING DYNASTY, QIANLONG PERIOD

carved to the domed cover in cinnabar lacquer with a wrapped flute and castanets amongst *ruyi*-shaped cloud swirls enclosed within a peach-shaped panel with scrolling clouds, all against a diaper ground in yellow lacquer, the box similarly carved with diaper ground with a key-fret border at the foot, the interior and base lacquered black

(2)

10.4 cm, 4 $\frac{1}{8}$ in.

PROVENANCE

Spink & Son Ltd., London.

£ 3,000-5,000

HK\$ 31,300-52,500 US\$ 4,000-6,700

清乾隆 剔紅暗八仙桃形蓋盒

來源

Spink & Son Ltd., 倫敦



249

250

**A CARVED CINNABAR LACQUER 'MAGPIE'
MING-STYLE BOWL
QING DYNASTY, QIANLONG PERIOD**

the rounded sides rising from a short foot to lipped rim,
carved to the exterior with three magpies perched upon leafy
branches of flowers and jagged rocks on a diaper ground
above a lappet border above the foot
12.8 cm, 5 in.

£ 6,000-8,000
HK\$ 62,500-83,500 US\$ 8,000-10,700

清乾隆 剔紅喜鵲登枝圖盃



250

251

**A CARVED BAMBOO 'PRUNUS' LIBATION CUP
QING DYNASTY, 17TH/18TH CENTURY**

the deep flaring sides carved in high relief and openwork in
the form of a trunk section, the exterior depicting gnarled
branches issuing budding and flowering prunus
8.9 cm, 3½ in.

£ 1,000-1,500
HK\$ 10,500-15,700 US\$ 1,350-2,000

清十七/十八世紀 竹雕梅花紋樽式盃



251

252

**A WHITE AND RUSSET JADE
CARVING OF 'POMEGRANATE'
GROUP**

QING DYNASTY, 18TH CENTURY

skilfully rendered as two conjoined ripe pomegranate with a clambering cicada, borne on a gnarled leafy branch, the polished stone of an even white tone with light russet highlights 6.5 cm, 2½ in.

£ 5,000-7,000

HK\$ 52,500-73,000 US\$ 6,700-9,300

清十八世紀 白玉榴開百子擺件



252

253

**AN AGATE 'HOLLYHOCK' CUP
QING DYNASTY, 17TH/18TH
CENTURY**

carved in the form of a hollyhock, borne on a leafy stem issuing smaller buds forming the handle and foot 10.3 cm, 4 in.

£ 1,500-2,000

HK\$ 15,700-20,900 US\$ 2,000-2,700

清十七/十八世紀 瑪瑙葵花形盃



253

254

**A CARNELIAN AGATE 'BAT AND
PEACH' VASE
QING DYNASTY, 19TH CENTURY**

naturalistically worked with the milky-white portion of the stone as a hollowed tree trunk forming the vase, the vermilion-red part of the stone skilfully fashioned into fruiting branches of peaches and bats on the exterior 6.6 cm, 2½ in. 7cm

£ 2,000-3,000

HK\$ 20,900-31,300 US\$ 2,700-4,000

清十九世紀 南紅瑪瑙福壽康寧花插



254

255

**A ROCK CRYSTAL 'PHOENIX AND BAMBOO' DOUBLE VASE
QING DYNASTY, 19TH CENTURY**

carved in the form of two adjacent bamboo shoots with leafy shoots around the sides, one side rendered in openwork with a phoenix standing on pierced rocks amongst peonies, the reverse with two *lingzhi* sprays issuing from rocks
9 cm, 3½ in.

£ 1,500-2,000
HK\$ 15,700-20,900 US\$ 2,000-2,700

清十九世紀 水晶浮雕鳳紋竹節式花插



255

256

**A CORAL 'DOUBLE-GOURD' SNUFF BOTTLE
QING DYNASTY, 19TH CENTURY**

carved in the round as a double-gourd with a bat near the neck, with smaller attendant double-gourds and the leafy stems flanking the bottle, stopper (2)
6.8 cm, 2⅝ in.

© £ 1,000-1,500
HK\$ 10,500-15,700 US\$ 1,350-2,000

清十九世紀 珊瑚福祿雙全鼻煙壺



256

257

**A WHITE JADE 'DOUBLE-PEACH' PENDANT
QING DYNASTY, 18TH CENTURY**

rendered as two peaches nestled on a gnarled leafy branch, a cicada perched atop the larger fruit, the stone of an even white colour with light russet highlights
6.2 cm, 2½ in.

£ 4,000-6,000
HK\$ 41,700-62,500 US\$ 5,400-8,000

清十八世紀 白玉雙桃珮



257



258

258

**A CELADON JADE RETICULATED PLAQUE
QING DYNASTY, 18TH CENTURY**

of oval form, reticulated with a pair of egrets flying amidst lotus blooms and clusters of foliage, the stone of an even celadon tone
9.5 cm, 3¾ in.

£ 2,000-3,000
HK\$ 20,900-31,300 US\$ 2,700-4,000

清十八世紀 青玉鏤雕荷塘鷺鷥紋牌飾

259

**A WHITE JADE 'PEAPOD' CARVING
QING DYNASTY, 19TH CENTURY**

naturalistically carved as a peapod borne on curling tendrils issuing leafy vines, the smoothly polished white stone with russet highlights
10 cm, 4 in.

£ 2,000-3,000
HK\$ 20,900-31,300 US\$ 2,700-4,000

清十九世紀 白玉豆莢



259



260

260

**A PALE CELADON JADE CARVING OF A PEONY
QING DYNASTY, 18TH/19TH CENTURY**

naturalistically carved as a blossoming peony with curled petals, borne on ribbon-tied leafy stems, the stone of an even pale celadon tone, fitted wood stand
7 cm, 2¾ in.

£ 2,000-3,000
HK\$ 20,900-31,300 US\$ 2,700-4,000

清十八/十九世紀 青白玉花開富貴擺件

261

A PALE CELADON JADE 'BAT AND DOUBLE-GOURD' GROUP

QING DYNASTY, 18TH CENTURY

rendered as a double gourd with further smaller attendant fruits borne on leafy vines with curling tendrils, with a bat perched near the top of the main fruit, the stone of an even pale celadon tone

6.5 cm, 2³/₅ in.

£ 3,000-5,000

HK\$ 31,300-52,500 US\$ 4,000-6,700

清十八世紀 青白玉福祿雙全擺件



261

262

A CELADON AND RUSSET JADE 'LOTUS' GROUP

QING DYNASTY, 18TH CENTURY

carved in the form of a lotus pod wrapped in a large furred leaf and a lotus flower, the smoothly polished celadon stone with russet inclusions predominantly to the leaves and stems

£ 4,000-6,000

HK\$ 41,700-62,500 US\$ 5,400-8,000

清十八世紀 青白玉蓮蓬形把件



262

263

A WHITE JADE 'LOTUS' BELT BUCKLE

QING DYNASTY, 19TH CENTURY

of oval form, the round surface carved with budding lotus flowers and furred lotus pads, the reverse with a *yinyang* circular knob and a dragon-head hook for fastening, the stone of an even white colour

5.6 cm, 2¹/₄ in.

£ 4,000-6,000

HK\$ 41,700-62,500 US\$ 5,400-8,000

清十九世紀 白玉蓮塘圖帶扣



263

264

A PALE CELADON JADE 'DOUBLE GOURD' SNUFF BOTTLE
QING DYNASTY, 19TH CENTURY

worked as a double gourd borne on leafy vines with curling tendrils, smaller attendant fruits and a bat on the exterior, the polished stone of an even pale celadon tone, stopper (2)
6 cm, 2³/₈ in.

£ 2,000-3,000
HK\$ 20,900-31,300 US\$ 2,700-4,000

清十九世紀 青白玉福祿雙全鼻煙壺



264

265

A WHITE JADE 'GOURD' SNUFF BOTTLE
QING DYNASTY, 18TH/19TH CENTURY

worked as a gourd borne on gnarled leafy stems issuing a smaller gourd and flower, with a bee on the side, the polished stone of an even white tone, hardstone stopper (2)
9 cm, 3¹/₂ in.

£ 4,000-6,000
HK\$ 41,700-62,500 US\$ 5,400-8,000

清十八/十九世紀 白玉瓜形鼻煙壺



265

266

A WHITE JADE 'POMEGRANATE' SNUFF BOTTLE
QING DYNASTY, 19TH CENTURY

carved as a pomegranate with a split to reveal the seeds inside and a cicada on the side, the polished stone of an even white tone, agate stopper
5.5 cm, 2¹/₈ in.

£ 2,000-3,000
HK\$ 20,900-31,300 US\$ 2,700-4,000

清十九世紀 白玉金蟬石榴鼻煙壺



266

PROPERTY FROM A SPANISH PRIVATE
COLLECTION

**A GILT-BRONZE FIGURE OF
BHAIŚAJYAGURU
QING DYNASTY, 18TH CENTURY**

the Medicine Buddha seated in *dhyanasana* on a double lotus base with a beaded edge, wearing a long flowing garment with floral hem open at the chest, the right hand holding the stem of the Myrobalan fruit, the serene face with meditative expression below thin arched brows and an *urna*, surmounted by hair arranged in rows of small whorls and a bud-shaped *ushnisha*, flanked by a pair of pendulous earlobes
16.3 cm, 6½ in.

£ 3,000-5,000

HK\$ 31,300-52,500 US\$ 4,000-6,700

清十八世纪 鎏金銅藥師佛坐像



**A GILT-BRONZE FIGURE OF GREEN TARA
QING DYNASTY, 17TH/18TH CENTURY**

cast seated in *lalitasana* on a double-lotus base with beaded edges, depicted with the hands held in *varada* and *vitarkamudra*, framed by a pair of pendulous earlobes adorned with ornate wheel-shaped earrings and an elaborate crown enclosing a high chignon, wearing a *dhoti* and a loose shawl over the shoulder, a billowing shawl falling neatly over the lotus base
17.1 cm, 6¾ in.

‡ £ 4,000-6,000

HK\$ 41,700-62,500 US\$ 5,400-8,000

清十七/十八世紀 鑲金銅綠度母坐像



268



269

269

**A SMALL GILT-BRONZE FIGURE OF
TSONGKAPA
QING DYNASTY, 18TH CENTURY**

the figure seated in *dhyanasana* on a double lotus base, his hands in *dharmachakramudra*, the gesture of teaching, wearing a *dhoti* and shawl, his shoulders flanked with flowers and attributes, his face with a serene expression with downcast eyes below a peaked hat
11.5 cm, 4½ in.

£ 2,000-3,000

HK\$ 20,900-31,300 US\$ 2,700-4,000

清十八世紀 銅鑲金宗喀巴坐像

**A POLYCHROME GILT-BRONZE FIGURE OF
AMITAYUS
QIANLONG MARK AND PERIOD DATED
GENGYIN YEAR, CORRESPONDING TO 1770**

cast seated in *dhyanasana* on a rectangular plinth with hands held in *dhyanamudra*, the silver-coloured figure dressed in a robe draped over the left shoulder leaving the right exposed, the face with a meditative expression beneath a five-leaf tiara, the front of the plinth with an inscription reading *Da Qing Qianlong gengyin nian jingzao* (Respectfully made in the *gengyin* year during the Qianlong period in the Great Qing dynasty, corresponding to 1770)
18 cm, 7 in.

£ 4,000-6,000

HK\$ 41,700-62,500 US\$ 5,400-8,000

清乾隆庚寅年（1770）

鑲金銅加彩無量壽佛坐像

《大清乾隆庚寅年敬造》款



270



271

271

**A GILT-BRONZE FIGURE OF AMITAYUS
QIANLONG MARK AND PERIOD DATED
GENGYIN YEAR, CORRESPONDING TO 1770**

cast seated in *dhyanasana* on a rectangular plinth with hands held in *dhyanamudra*, dressed in a robe draped over the left shoulder leaving the right exposed, the face with a meditative expression beneath a five-leaf tiara, all framed by a separately cast flaming *mandorla*, the front of the plinth with an inscription reading *Da Qing Qianlong gengyin nian jingzao* (Respectfully made in the *gengyin* year during the Qianlong period in the Great Qing dynasty, corresponding to 1770)
(2)

£ 4,000-6,000

HK\$ 41,700-62,500 US\$ 5,400-8,000

清乾隆庚寅年（1770）

鑲金銅無量壽佛坐像

《大清乾隆庚寅年敬造》款



272

272

**A CARVED STONE FIGURE OF BUDDHA
EASTERN WEI DYNASTY**

carved seated on a throne, wearing a long flowing robe falling in gentle folds around the arms and legs, the face with gentle smile and the hair piled into a high top knot, the stone of dark grey tone, black marble mount
23.5cm, 9¼in.

PROVENANCE

Purchased from Kugel, Paris, 9th September, 1981.

† £ 1,000-2,000

HK\$ 10,500-20,900 US\$ 1,350-2,700

東魏 石雕佛坐像

來源

購自Kugel，巴黎，1981年9月9日

273

**A RARE INSCRIBED BRONZE BODHISATVA
MOULD AND COVER**

QIANLONG MARK AND PERIOD

the interior set with a negative mould of the multi-armed deity seated in *lalitasana* and holding various attributes in the various hands, framed by a mandorla decorated with flower sprays and scrolling foliage on a double lotus pedestal, the side with an engraved six-character Qianlong mark, the interior of the cover with a further engraved six-character mark in reverse and Manchu inscription in reverse, the exterior with an attached double loop handle

(2)

9.9 cm, 3⅞ in.

‡ £ 2,000-3,000

HK\$ 20,900-31,300 US\$ 2,700-4,000

清乾隆 銅菩薩坐像模具

《大清乾隆年製》款



273



274

274

**A LARGE AND RARE DATED WHITE MARBLE
STELE FRAGMENT**

**EASTERN WEI DYNASTY, DATED TO THE
THIRD YEAR OF THE WU DING PERIOD,
CORRESPONDING TO 545**

the solid rectangular base with an eighteen-line calligraphic inscription and dated 'Wu Ding third year' to the back, the front carved with a kneeling European figure supporting a censer, flanked by two ferocious seated lions and the bases of two acolytes, all supporting a figure of Maitreya seated in 'Royal ease', flanked by the bases of two pairs of acolytes, the crystalline stone of white tone
37 by 34 cm, 14½ by 13⅜ in.

£ 2,000-3,000

HK\$ 20,900-31,300 US\$ 2,700-4,000

東魏武定三年（545年）

大理石雕刻銘殘石

**A GILT-COPPER ALLOY FIGURE OF
CHAKRASAMVARA**
NEPAL, 16TH CENTURY

well cast with twelve-armed Chakrasamvara standing in *alidhasana* and trampling on the prostrate Kalaratri and Bhairava, his hands holding various ritual implements, he consort Vajravarahi with the right leg raised, the left hand holding a *kapala* and the right hand holding a *kartrika*, both deities adorned in garlands of severed heads and crowns, fixed base

(2)

16.2 cm, 6 $\frac{3}{8}$ in.

£ 5,000-7,000

HK\$ 52,500-73,000 US\$ 6,700-9,300

尼泊爾 十六世紀 鎏金銅勝樂金剛像



275



276

276

A PARCEL GILT-BRONZE FIGURE OF GUANYIN
LATE MING

the figure seated in *dhyanasana*, his right hand raised lifting an attribute and the left holding a cup, wearing long flowing robes, body jewellery and a pendant crown framing the serene face with downcast eyes

25.5 cm, 9 $\frac{7}{8}$ in.

£ 3,000-5,000

HK\$ 31,300-52,500 US\$ 4,000-6,700

明末 局部鎏金銅觀音坐像

277

PROPERTY FROM A SPANISH PRIVATE COLLECTION

A BRONZE FIGURE OF HAYAGRIVA
QING DYNASTY, 19TH CENTURY

cast standing in *alidhasana* with his consort on a rectangular lotus base, the deity in his three-headed form with six arms and feathered wings, adorned with an ornate headdress formed of skulls, a horse head bursting of his fiery hair

19.6 cm, 7 $\frac{3}{4}$ in.

£ 2,000-3,000

HK\$ 20,900-31,300 US\$ 2,700-4,000

清十九世紀 銅馬頭金剛立像



277



278

278

**A 'QINGBAI' LOBED JAR AND COVER
SONG DYNASTY**

the lobed ovoid body rising from a short straight foot to a short tapering neck, covered overall in an ice-blue glaze falling short of the foot, the similarly glazed floral-shaped cover centred with a flower and detailed with floral sprigs enclosed within petals

(2)

7.5 cm, 3 in.

£ 2,000-3,000

HK\$ 20,900-31,300 US\$ 2,700-4,000

宋 青白釉瓜形小蓋罐

279

**A 'JIAN' 'HARE'S-FUR' TEA BOWL
SONG DYNASTY**

the steep flaring sides rising from a short straight foot to an indented slightly everted rim, covered overall in a glossy black glaze finely streaked in russet resembling hare's fur, the glaze stopping short of the foot to reveal the dark reddish-brown body

11.8 cm, 4⁵/₈ in.

£ 2,000-3,000

HK\$ 20,900-31,300 US\$ 2,700-4,000

宋 建窑黑釉兔毫盃



279

280

**A SMALL 'YAOZHOU' LOBED JAR
SONG DYNASTY**

the lobed globular body rising from a short slightly spreading foot to a short rim, carved to the exterior with leafy floral sprays, covered overall with an olive-green glaze

8.3 cm, 3¹/₄ in.

£ 1,000-1,500

HK\$ 10,500-15,700 US\$ 1,350-2,000

宋 耀州青釉刻花小罐



280

A 'JUN' BOWL
YUAN DYNASTY

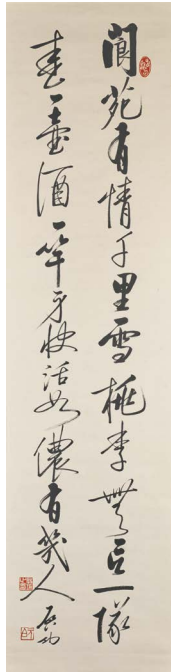
the deep rounded sides rising from a short slightly tapering narrow foot, covered overall with a pale blue glaze transmuting to a mushroom tone at the rim, the glaze falling unevenly above the foot
19 cm, 7½ in.

£ 3,000-4,000
HK\$ 31,300-41,700 US\$ 4,000-5,400

元 鈞窰藍釉盃



281



282

282

CALLIGRAPHY IN RUNNING SCRIPT QI GONG
(1912-2005)

signed QI GONG, with three seals of the artist
ink on paper, hanging scroll
133.4 by 33.5 cm, 52½ by 13½ in.

£ 3,000-5,000
HK\$ 31,300-52,500 US\$ 4,000-6,700

《漁父》水墨紙本 立軸
啟功 (1912-2005年)

283

A BLUE AND WHITE 'PHOENIX MEDALLION'
JAR
QING DYNASTY, KANGXI PERIOD

of ovoid form painted with three medallions, framed by brackets of stylised cloud scrolls, each roundel composed of a phoenix in flight amidst smaller clouds, all between cloud scrolls and *Bajixiang* emblems encircling the shoulder and lower body, a further band of cloud scrolls below the rim, the base with a leaf within a double circle in underglaze blue
12.4 cm, 4⅞ in.

£ 1,000-2,000
HK\$ 10,500-20,900 US\$ 1,350-2,700

清康熙 青花團鳳紋罐



283

**A BLUE AND WHITE 'LONGEVITY' BOWL
MING DYNASTY, WANLI PERIOD**

the rounded sides rising from a slightly splayed foot to a flared rim, painted to the exterior with two herds of deer beneath a peach tree and a turtle in a river landscape, the interior with a central medallion enclosing a fruiting peach tree, its trunk twisted and bent to form a *shou* character, the base inscribed with the four-character mark *fugui jiaqi* (beautiful vessel for the rich and honourable)
14.2 cm, 5 $\frac{5}{8}$ in.

PROVENANCE

Sotheby's London, 28th November 1978, lot 61.

£ 1,500-2,000

HK\$ 15,700-20,900 US\$ 2,000-2,700

明萬曆 青花瑞鹿圖盃
《富貴佳器》款

來源

倫敦蘇富比1978年11月28日，編號61



284

**A CELADON-GLAZED 'SHOU' DISH
YONGZHENG MARK AND PERIOD**

the shallow rounded sides supported on a slightly tapered foot, the interior incised with a central medallion enclosing crashing waves and *ruyi* clouds surrounding a *shou* character roundel, with further waves encircling the roundel, covered overall with a lustrous sea-green glaze, the base inscribed with a six-character reign mark within a double-circle in underglaze blue
16.2 cm, 6 $\frac{3}{8}$ in.

PROVENANCE

Sotheby's London, 28th November 1978, lot 112.

£ 1,000-2,000

HK\$ 10,500-20,900 US\$ 1,350-2,700

清雍正 東青釉福海拱壽小盤
《大清雍正年製》款

來源

倫敦蘇富比1978年11月28日，編號112



mark



285

**A PAIR OF FAMILLE-ROSE 'FLOWER-BALLS'
WINE CUPS AND WARMERS
SEAL MARKS AND PERIOD OF DAOGUANG**

each warmer with bulbous sides rising from a short straight foot to a gilt rim, painted with multi-coloured 'flower-balls' arranged asymmetrically and scattered throughout, surmounted by a cup with straight sides rising from a tapered foot to a flared gilt rim, the exterior similarly decorated, the base inscribed with a six-character seal mark in iron-red

(4)

9.6 cm, 3¾ in.

PROVENANCE

Sotheby's London, 28th November 1978, lot 273 (part lot).

£ 4,000-6,000

HK\$ 41,700-62,500 US\$ 5,400-8,000

清道光 粉彩皮球花酒盃連溫酒器一對
《大清道光年製》款

來源

倫敦蘇富比1978年11月28日，編號273（其一）



mark



mark



286



**AN IRON-RED AND GREEN-ENAMELLED
'DRAGON AND PHOENIX MEDALLION' WINE
CUP AND WARMER**

SEAL MARK AND PERIOD OF DAOGUANG

the warmer with rounded sides rising from a short straight foot to a gilt rim, painted with alternating dragon and phoenix roundels in green enamel all between a lappet border above the foot and stylised *ruyi* scrolls below the rim, surmounted by a cup with straight sides rising from a tapered foot to a flared rim, the exterior similarly decorated, the base inscribed with a six-character seal mark in iron-red

(2)

9.8 cm, 3⅞ in.

PROVENANCE

Sotheby's London, 28th November 1978, lot 273 (part lot).

£ 2,600-3,000

HK\$ 27,100-31,300 US\$ 3,450-4,000

清道光 紅綠彩圖龍鳳紋酒盃連溫酒器
《大清道光年製》款

來源

倫敦蘇富比1978年11月28日，編號273（其一）



mark



287

PROPERTY OF A LADY

LOTS 288-293



288

288

A LARGE FAMILLE-VERTE 'LADIES' BOWL QING DYNASTY, KANGXI PERIOD

the deep rounded sides rising from a short foot, enamelled around the exterior with ladies in a garden, framed above by a diaper band with *ruyi* heads and precious objects in reserve within shaped cartouches, with a keyfret band to the foot, the interior decorated with flower blossoms and fruits, wood stand

(2)

31.4 cm, 12³/₈ in.

£ 1,000-1,500

HK\$ 10,500-15,700 US\$ 1,350-2,000

清康熙 五彩仕女圖大盃

289

EDGAR GORER AND J.F. BLACKER, CHINESE PORCELAIN AND HARDSTONES, VOLS I-II, LONDON, QUARITCH, 1911

two volumes, original gilt decorated cloth, limited edition, number 10 of 1000, numerous coloured illustrations on 254 plates

(2)

£ 3,000-5,000

HK\$ 31,300-52,500 US\$ 4,000-6,700

1911年 EDGAR GORER 及 J.F.
BLACKER 著《CHINESE PORCELAIN
AND HARD STONES》二卷全



289



290

290

TWO FAMILLE-VERTE TEA CADDIES QING DYNASTY, KANGXI PERIOD

each of rectangular section with a tall straight body sweeping up to a sloping shoulder and a short neck, painted on each side with various birds and flowers, all framed by a green-enamelled frame, wood covers

(4)

26.4 and 26.2 cm, 10³/₈ and 10¹/₄ in.

£ 2,000-3,000

HK\$ 20,900-31,300 US\$ 2,700-4,000

清康熙 五彩開光花鳥紋方瓶一組兩件

291

**TWO BROWN SPLASHED 'QINGBAI' FIGURES OF OFFICIALS
SONG DYNASTY**

each figure standing on an hexagonal base wearing an official's hat and long draped robe, one holding a tablet against his face, the other with a pig's head, covered overall with a translucent and very pale blue colour with splashes of dark iron-brown
(2)
20.7 and 19.8 cm, 8¹/₈ and 7³/₄ in.

EXHIBITED

Iron in the Fire. The Chinese Potters' Exploration of Iron Oxide Glazes, The Oriental Ceramic Society, Ashmolean Museum, Oxford, 1988, cat. no. 79.

£ 3,000-4,000
HK\$ 31,300-41,700 US\$ 4,000-5,400

宋 青白釉褐斑文官立像一組兩尊

展覽

《Iron in the Fire. The Chinese Potters' Exploration of Iron Oxide Glazes》, 東方陶瓷學會, 阿什莫林博物館, 牛津, 1988年, 編號79



291

292

**A TURQUOISE-GLAZED FIGURE OF ZHENWU
17TH CENTURY**

the deity seated on a high-back throne chair raised on a waisted plinth in dark blue and turquoise enamels, wearing a turquoise-enamelled dragon robe, with various areas left unglazed revealing the grey stoneware
34 cm, 13²/₅ in.

£ 2,000-3,000
HK\$ 20,900-31,300 US\$ 2,700-4,000

十七世紀 孔雀綠釉真武坐像



292

293

**A PURPLE-SPLASHED 'JUN' BOWL
SONG DYNASTY**

the deep rounded sides supported on a low spreading foot, covered overall with a 'moon white' glaze deepening to a lavender tone by the foot and draining to a pale mushroom color at the rim, the interior with purple splashes
18 cm, 7 in.

£ 3,000-5,000
HK\$ 31,300-52,500 US\$ 4,000-6,700

宋 鈞窰月白釉紫斑盃



293



294

294

**A 'LONGQUAN' CELADON 'TWIN FISH' DISH
EARLY MING DYNASTY**

the gently rounded sides carved with lotus petals and rising from a short tapering foot to an everted rim, the interior applied with a pair of scaly fish swimming in opposite directions, covered in a bluish-green glaze
22.2 cm, 8¾ in.

£ 8,000-12,000
HK\$ 83,500-125,000 US\$ 10,700-16,000

明初 龍泉窰青釉貼雙魚折沿盤

295

**A SMALL 'LONGQUAN' CELADON TRIPOD
CENSER**

SONG DYNASTY

the cylindrical ribbed body rising from three short *ruyi*-feet to an inverted dished rim, covered overall in an olive-green glaze save for an unglazed medallion on the base, white metal over

(2)

6 cm, 2¾ in.

£ 6,000-8,000
HK\$ 62,500-83,500 US\$ 8,000-10,700

宋 龍泉窰青釉弦紋三足爐



295

296

**A SMALL 'LONGQUAN' CELADON 'TWIN FISH'
DISH**

SONG DYNASTY

the gently rounded sides rising from a short tapering foot to an everted rim, the interior applied with a pair of scaly fish swimming in opposite directions, covered in a sea-green glaze

13.1 cm, 5¼ in.

£ 4,000-6,000
HK\$ 41,700-62,500 US\$ 5,400-8,000

宋 龍泉窰青釉貼雙魚折沿小盤



296

297

TWO SMALL CARVED 'DING' DISHES
NORTHERN SONG DYNASTY

the shallow rounded sides rising from a flat base, the interior carved with a foral bloom borne on leafy branches, covered in an even ivory glaze, the rim bound in copper
(2)

14 and 13.8 cm, 5½ and 5⅝ in.

‡ £ 3,000-5,000

HK\$ 31,300-52,500 US\$ 4,000-6,700

北宋 定窯白釉劃花卉紋小盤一組兩件



297

298

A WHITE-GLAZED 'LOTUS' BOWL
NORTHERN SONG DYNASTY

the deep rounded sides rising from a short foot, decorated to the exterior with overlapping lotus petals, covered overall in a creamy white glaze
10.2 cm, 4 in.

‡ £ 2,000-3,000

HK\$ 20,900-31,300 US\$ 2,700-4,000

北宋 定窯白釉劃蓮花紋盃



298

299

A CARVED 'DING' DISH
NORTHERN SONG DYNASTY

the flared sides rising from a short foot to a six-lobed rim, the interior freely carved with a single lotus bloom borne on leafy stems, covered overall in a creamy ivory glaze
21 cm, 8¼ in.

‡ £ 3,000-5,000

HK\$ 31,300-52,500 US\$ 4,000-6,700

北宋 定窯白釉刻蓮紋盤



299



300

300

**A CARVED 'YAOZHOU' CELADON DISH
YUAN/EARLY MING DYNASTY**

the rounded sides rising from a short foot to a prominent rolled rim, the interior carved with three floral blooms issuing from a central branch, all against a foliate ground, covered overall in an even olive-green glaze
12.5 cm, 4⁷/₈ in.

£ 3,000-5,000
HK\$ 31,300-52,500 US\$ 4,000-6,700

元/明初 耀州窑青釉刻花卉纹小盘

301

**A MOULDED 'YAOZHOU' BOWL
NORTHERN SONG DYNASTY**

of deep conical form supported on a short foot, moulded to the interior with a central stylised floral medallion encircled by undulating leafy stems issuing chrysanthemum blooms, the exterior incised with radiating lines, covered overall in an olive-green glaze
18.2 cm, 7¹/₈ in.

£ 4,000-6,000
HK\$ 41,700-62,500 US\$ 5,400-8,000

北宋 耀州窑青釉印缠枝菊花纹盃



301

302

**A 'YAOZHOU' CELADON FOLIATE-SHAPED
DISH
YUAN/EARLY MING DYNASTY**

the shallow sides rising at an angle to an undulating rim, the interior moulded with a central bloom borne on a leafy sprig wreathed by foliate scrolls, covered overall in an olive-green glaze
14.8 cm, 5³/₄ in.

£ 1,500-2,500
HK\$ 15,700-26,100 US\$ 2,000-3,350

元/明初 耀州窑青釉花式盘



302

303

**A 'DING' PERSIMMON-GLAZED DISH
NORTHERN SONG DYNASTY**

the flaring and angled sides rising from a short spreading foot, covered overall in a reddish-brown glaze
16.2 cm, 6³/₈ in.

£ 4,000-6,000
HK\$ 41,700-62,500 US\$ 5,400-8,000

北宋 定窑醬釉盤



303



304

304

**A PERSIMMON-GLAZED JAR
NORTHERN SONG DYNASTY**

the ovoid body rising from a flat foot and countersunk base to a rounded shoulder and lipped rim, covered overall in a russet-brown glaze stopping neatly around the foot to reveal the buff-gray body
12 cm, 5¹/₂ in.

£ 6,000-8,000
HK\$ 62,500-83,500 US\$ 8,000-10,700

北宋 醬釉小罐

305

**A 'DING' PERSIMMON-GLAZED BOWL
NORTHERN SONG DYNASTY**

of conical form, the finely potted wide sides supported on a short foot, applied overall with a reddish-brown glaze, thinning at the rim to a dark brown tone, stopping before the foot to reveal the fine buff body
12.9 cm, 5¹/₈ in.

£ 3,000-5,000
HK\$ 31,300-52,500 US\$ 4,000-6,700

北宋 定窑醬釉笠式盃



305

306

**A 'JIZHOU' 'PAPERCUT' 'PRUNUS' BOWL
SONG DYNASTY**

the slightly rounded sides rising from a short tapered foot, rendered to the interior and resist-decorated with plum blossom florets, the exterior with a dark brown glaze stopping short of the unglazed foot
11.7 cm, 4 $\frac{5}{8}$ in.

‡ £ 1,500-2,500

HK\$ 15,700-26,100 US\$ 2,000-3,350

宋 吉州窑黑釉剪纸贴梅花纹盃



306

307

**A 'YUE'-TYPE BOX AND COVER
NORTHERN SONG DYNASTY**

of shallow circular form, carved in relief to the centre of the slightly domed cover with a bird in flight amidst foliage within three raised circle lines, surrounded with a band of combed design, covered overall with an even brown glaze
17 cm, 6 $\frac{2}{3}$ in.

‡ £ 3,000-5,000

HK\$ 31,300-52,500 US\$ 4,000-6,700

北宋 越窑系褐釉刻花鳥紋蓋盒



307

308

**A 'JIAN' 'HARE'S FUR' BOWL
NORTHERN SONG DYNASTY**

of conical form, covered with a black glaze with russet 'hare's fur' streaks running down from the rim stopping short above the foot and revealing the buff-coloured stoneware
12.8 cm, 5 in.

‡ £ 3,000-5,000

HK\$ 31,300-52,500 US\$ 4,000-6,700

北宋 建窑黑釉兔毫笠式茶盞



308



309

309

**A LARGE 'JUN' BOWL
YUAN DYNASTY**

the deep rounded sides rising from a short spreading foot to a slightly incurved rim, covered overall with a thick streaky lavender-blue glaze
22 cm, 8¾ in.

£ 4,000-6,000
HK\$ 41,700-62,500 US\$ 5,400-8,000

元 鈞窯天藍釉大盃

310

**A LARGE MARBLED BOWL
TANG DYNASTY**

the deep rounded sides rising from a short spreading foot to a slightly incurved rim, decorated inside and out with a combed feathery pattern of brown and white slip beneath a plain band at the rim, all under a transparent glaze
16 cm, 6¼ in.

£ 4,000-6,000
HK\$ 41,700-62,500 US\$ 5,400-8,000

唐 絞胎大盃



310

311

**A LARGE 'JUN' GREEN-GLAZED BOWL
YUAN DYNASTY**

the deep rounded sides rising from a short spreading foot to an incurved rim, covered overall with a thick olive-green glaze suffused with a matrix of crackles
22 cm, 9⅞ in.

PROVENANCE

Eskenazi Ltd., London (according to label).
Sotheby's London, 12th May 2010, lot 46.

£ 4,000-6,000
HK\$ 41,700-62,500 US\$ 5,400-8,000

元 鈞窯綠釉大盃

來源

Eskenazi Ltd., 倫敦 (標籤)
倫敦蘇富比2010年5月12日, 編號46



311

PROPERTY FROM A EUROPEAN PRIVATE COLLECTION

LOTS 312-323

312

**AN UNUSUAL SMALL CELADON 'MASK'
WHISTLE**

10TH CENTURY

modelled in the form of a hollowed mask of a guardian,
applied overall with a pale olive-green glaze
4.8 cm, 1 $\frac{7}{8}$ in.

£ 3,000-5,000

HK\$ 31,300-52,500 US\$ 4,000-6,700

十世紀 青釉護法頭像把件

313

**A SMALL 'LONGQUAN' CELADON TRIPOD
CENSER**

SONG DYNASTY

the cylindrical ribbed body rising from three short feet to an
inverted rim, covered overall in an olive-green glaze save for
an unglazed medallion on the base
7.1 cm, 2 $\frac{3}{4}$ in.

£ 4,000-6,000

HK\$ 41,700-62,500 US\$ 5,400-8,000

宋 龍泉窰青釉三足爐



312



313

314

A 'YAOZHOU' TRIPOD CENSER
SONG DYNASTY

the compressed spherical body rising to a waisted neck and below the broad everted rim, all supported on three splayed legs issuing from animal masks, covered overall with a glossy sage-green glaze
Diameter 12.2 cm, 4¾ in.

£ 15,000-25,000

HK\$ 157,000-261,000 US\$ 20,000-33,200

宋 耀州窑青釉三足爐





315

315

A PAIR OF 'JIZHOU' BROWN-GLAZED LOBED DISHES
SONG DYNASTY

each of flower form, the lobed sides rising from a short straight foot, covered overall in caramel colour glazes reserved on a dark chocolate-brown ground, falling short of the footring to reveal the pale buff body

(2)

13.1 cm, 5 1/8 in.

£ 4,000-6,000

HK\$ 41,700-62,500 US\$ 5,400-8,000

宋 吉州窯黑釉褐斑花式盤一對

316

A 'CIZHOU' RUSSET-STREAKED BOWL
SONG DYNASTY

the deep rounded sides rising from a short spreading foot to a slightly everted rim, covered overall in a dark brown-black glaze with vertical russet streaks to the interior and falling short of the foot on the exterior to reveal the pale creamy-white body

19.1 cm, 7 1/2 in.

£ 2,000-3,000

HK\$ 20,900-31,300 US\$ 2,700-4,000

宋 磁州窯黑地褐彩盃



316



317

317

A BLACK-GLAZED JAR
SONG DYNASTY

the globular body rising from a short spreading foot to a short waisted neck with incurved rim, flanked by a pair of lug handles, covered overall in a black glaze falling short of the foot to reveal the light-beige body

23.3 cm, 9 in.

£ 6,000-8,000

HK\$ 62,500-83,500 US\$ 8,000-10,700

宋 黑釉雙耳罐

318

TWO RUSSET-SPLASHED BLACK-GLAZED BOWLS
SONG DYNASTY

each with rounded sides rising from a short splayed foot to a slightly incurved rim, covered overall with a black glaze accentuated with russet splashes falling short above the foot revealing the buff-coloured body

(2)

11 cm, 4 $\frac{3}{8}$ in.

£ 4,000-6,000

HK\$ 41,700-62,500 US\$ 5,400-8,000

宋 黑釉醬斑盃一組兩件



318



319

319

A 'CIZHOU' BLACK-GLAZED STAND
SONG DYNASTY

the cylindrical body rising from a tall splayed foot to a broad everted rim, the exterior covered in a black glaze

8.2 cm, 3 $\frac{1}{4}$ in.

£ 3,000-5,000

HK\$ 31,300-52,500 US\$ 4,000-6,700

宋 磁州窯黑釉燭台

320

A WHITE-RIMMED BLACK-GLAZED
TEA BOWL
SONG DYNASTY

the conical sides rising from a recessed base, covered in a dark-brown glaze in the interior and exterior stopping above the foot revealing the white biscuit body, white slip under a clear glaze applied to the lipped rim

10.9 cm, 4 $\frac{1}{4}$ in.

£ 3,000-5,000

HK\$ 31,300-52,500 US\$ 4,000-6,700

宋 黑釉茶盞



320



321

321

**A 'JIEXIU' 'FLORAL' DISH
SONG DYNASTY**

the shallow rounded sides rising from a short straight foot, covered overall in an ivory-coloured glaze and painted to the interior with floral sprigs
22.8 cm, 9 in.

£ 3,000-5,000

HK\$ 31,300-52,500 US\$ 4,000-6,700

宋 介休窰花卉紋盤

322

**TWO 'CIZHOU' RUSSET-SPLASHED BOWLS
SONG DYNASTY**

each of conical form, the rounded sides rising to an incurved rim, covered overall in a black glaze splashed with russet-brown, the glaze falling short above the foot revealing the greyish buff body

(2)

14.2 and 13.9 cm, 5 $\frac{5}{8}$ and 5 $\frac{1}{2}$ in.

£ 6,000-8,000

HK\$ 62,500-83,500 US\$ 8,000-10,700

宋 磁州窰黑釉鐵銹斑盃一組兩件



322



323

323

**A BROWN-GLAZED BOTTLE VASE,
YUHUCHUNPING
SONG DYNASTY**

the pear-shaped body supported on a spreading foot and rising to a waisted neck and a flared rim, painted in the central band with brown-coloured stylised birds and leaves against white ground, all between two brown-coloured glaze bands, the glaze falling short near the foot revealing a pale buff-coloured body
22.5 cm, 8 $\frac{7}{8}$ in.

£ 3,000-5,000

HK\$ 31,300-52,500 US\$ 4,000-6,700

宋 白地褐彩玉壺春瓶

324

**A DEHUA RETICULATED BRUSHPOT
QING DYNASTY, 18TH CENTURY**

of tall cylindrical form rising from a concave base, the sides deftly pierced with stylised floral sprays reserved against a patterned fretwork ground, glazed overall in a lustrous creamy-white glaze
13 cm, 5 $\frac{1}{8}$ in.

± £ 1,500-2,000
HK\$ 15,700-20,900 US\$ 2,000-2,700

清十八世紀 德化白釉鏤雕花卉紋筆筒



324

325

**A PAIR OF QINGBAI CIRCULAR BOXES AND
COVERS
SONG DYNASTY**

each moulded in relief to the upper surface with flowering chrysanthemum, the sides with bands of bamboo, covered in a pale blue translucent glaze, Japanese wood box
(5)
8.3 cm, 3 $\frac{1}{4}$ in.

PROVENANCE

Gallery Kochukyuo Co. Ltd., Tokyo.

± £ 6,000-8,000
HK\$ 62,500-83,500 US\$ 8,000-10,700

宋 青白釉花卉紋蓋盒一對

來源

Gallery Kochukyuo Co. Ltd., 東京



325



SESSION TWO

LONDON
FRIDAY
17 MAY 2019
2 PM

LOTS 326-478



A PRIVATE COLLECTION OF BRONZE CENSERS

LOTS 326-355



326

□ 327 SOLD WITHOUT RESERVE

A BRONZE 'ELEPHANT' TRIPOD CENSER QING DYNASTY, 18TH CENTURY

of slightly tapering cylindrical form with a flared rim flanked by a pair of upright loop handles, raised on three prominent elephant-head feet, the base with an apocryphal six-character Xuande mark
34.2 cm, 13½ in.

£ 3,000-5,000
HK\$ 31,300-52,500 US\$ 4,000-6,700

清十八世紀 銅衝天耳象足爐
《大明宣德年製》仿款

□ 326 SOLD WITHOUT RESERVE

A BRONZE TRIPOD CENSER 17TH/18TH CENTURY

the compressed globular body rising from three short spreading feet to a short neck and everted rim, the base cast with an apocryphal nine-character mark reading *Xuande nian Guanshi Zhuren Jianzhi*, the bronze patinated to an even light golden-brown tone
19 cm, 7½ in.

£ 2,000-3,000
HK\$ 20,900-31,300 US\$ 2,700-4,000

十七/十八世紀 銅鬲式爐
《宣德年冠石主人監製》款



327

□ 328 SOLD WITHOUT RESERVE

A BRONZE ROPE-HANDLED TRIPOD CENSER 17TH/18TH CENTURY

the compressed globular body rising from three short spreading feet to a short straight neck and flaring rim, set at the rim with a pair of rope-twist handles, the base cast with a four-character mark reading *yongcun zhenwan* ('everlasting rare curiosities'), the metal patinated to an even light golden-brown tone
13 cm, 5⅛ in.

£ 1,000-2,000
HK\$ 10,500-20,900 US\$ 1,350-2,700

十七/十八世紀 銅繩耳三足爐
《永淳珍玩》款



328

□ 329 SOLD WITHOUT RESERVE

A BRONZE CENSER
QING DYNASTY, 18TH/19TH CENTURY

the compressed globular body rising from a short spreading foot to a waisted neck with everted rim, set at the shoulder with a pair of simple loop handles, the base cast with an apocryphal six-character Xuande reign mark within a rectangle and encircled by a pair of low relief scaly five-clawed dragons
20 cm, 7⁷/₈ in.

£ 1,000-2,000
HK\$ 10,500-20,900 US\$ 1,350-2,700

清十八/十九世紀 銅蚰耳爐
《大明宣德年製》仿款



329

□ 330 SOLD WITHOUT RESERVE

A BRONZE TRIPOD CENSER
QING DYNASTY, 19TH CENTURY

the straight-sided circular body rising from three tall columnar legs to a waisted straight neck and everted rim, the neck set with a pair of lion mask handles, the base cast with an apocryphal six-character Xuande reign mark, the metal patinated to a dark gun-metal grey tone
15 cm, 5⁷/₈ in.

£ 600-800
HK\$ 6,300-8,400 US\$ 800-1,100

清十九世紀 銅獅耳三足爐
《大明宣德年製》仿款



330

□ 331 SOLD WITHOUT RESERVE

A SMALL BRONZE CENSER
17TH/18TH CENTURY

the compressed globular body rising from three short columnar legs to a short neck with flaring everted rim, the base cast with an apocryphal four-character Xuande reign mark, the metal patinated to an even golden-brown tone
13.5 cm, 5¹/₄ in.

£ 2,000-3,000
HK\$ 20,900-31,300 US\$ 2,700-4,000

十七/十八世紀 銅鬲式爐
《宣德年製》仿款



331



332

□ 332 SOLD WITHOUT RESERVE

**A GOLD-SPLASHED CENSER
17TH/18TH CENTURY**

the pear-shaped body rising from a short spreading foot to an everted rim, set at the shoulder with a pair of mythical beast-head handles and decorated around the exterior with gold splashes, the base cast with a four-character seal mark reading *wanzhu pin er*
12.5 cm, 5 in.

£ 2,000-3,000
HK\$ 20,900-31,300 US\$ 2,700-4,000

十七/十八世紀 灑金銅瑞獸耳爐
《玩竹品二》款

□ 333 SOLD WITHOUT RESERVE

**A LARGE BRONZE CENSER AND STAND
QING DYNASTY, 18TH/19TH CENTURY**

the compressed globular body rising from a short spreading foot to an everted flaring rim, incised around the exterior with two rectangular panels, one enclosing figures in a garden, the other a large eagle perched on a fir tree, all divided by a pair dragon-headed handles, the base cast with an apocryphal four-character Xuande seal mark, the circular stand supported on three *ruyi* feet joined by a shaped apron, the metal patinated to a dark chocolate tone
(2)
25.5 cm, 10 $\frac{1}{8}$ in.

£ 1,000-2,000
HK\$ 10,500-20,900 US\$ 1,350-2,700

清十八十九世紀
銅暗刻仕女圖獸耳爐連座
《宣德年製》仿款



333

□ 334 SOLD WITHOUT RESERVE

**A BRONZE CENSER
QING DYNASTY, 18TH/19TH CENTURY**

the pear-shaped body rising from a short spreading foot to an everted rim, set at the shoulder with a pair of bamboo handles, the base cast with an apocryphal Xuande six-character reign mark, the metal patinated to a rich warm toffee tone
13.5 cm, 5 $\frac{1}{4}$ in.

£ 1,000-2,000
HK\$ 10,500-20,900 US\$ 1,350-2,700

清十八/十九世紀 銅戟耳爐
《大明宣德年製》仿款



334

□ 335 SOLD WITHOUT RESERVE

A LARGE TRIPOD BRONZE CENSER
17TH/18TH CENTURY

the compressed globular body raised on three short conical feet, the slightly everted rim set with two upright loop handles, the underside cast with an apocryphal six-character Xuande mark within a rectangle
26 cm, 10¼ in.

£ 5,000-7,000

HK\$ 52,500-73,000 US\$ 6,700-9,300

十七/十八世紀 銅衝天耳三足爐
《大明宣德年製》仿款





336

□ 336 SOLD WITHOUT RESERVE

**A GOLD-SPLASHED BRONZE CENSER
17TH/18TH CENTURY**

the compressed globular body rising from a slightly spreading foot to a flared rim, liberally splashed with gold around the exterior, the base with an apocryphal four-character Xuande mark
16.3 cm, 6½ in.

£ 3,000-5,000
HK\$ 31,300-52,500 US\$ 4,000-6,700

十七/十八世紀 灑金銅爐
《宣德年製》仿款

□ 337 SOLD WITHOUT RESERVE

**A GILT-BRONZE TRIPOD CENSER AND COVER
QING DYNASTY, 19TH CENTURY**

the compressed globular body rising from three tall columnar legs to a short straight neck and everted straight rim, finely incised around the exterior with floral scrolls below a low relief double lotus leaf band and divided by four quatrefoil panels enclosing medium relief flower sprays, two with lion mask handles, the domed cover pierced with foliate scrolls and surmounted by a lion dog finial
(2)

13.5 cm, 5¾ in.

£ 600-800
HK\$ 6,300-8,400 US\$ 800-1,100

清十九世紀 鎏金銅獅鈕三足蓋爐



337

□ 338 SOLD WITHOUT RESERVE

**A BRONZE CENSER
QING DYNASTY, 18TH CENTURY**

the compressed globular body rising from a short spreading foot to a short neck and everted rim, set at the waist with a pair of lion mask handles, the base cast with a three-character seal mark reading *Fei Yun Ge* ('Pavilion of the Flying Clouds'), the metal patinated to an even chocolate brown tone
18 cm., 7¼ in.

£ 1,500-2,500
HK\$ 15,700-26,100 US\$ 2,000-3,350

清十八世紀 銅獸耳爐
《飛雲閣》款



338

□ 339 SOLD WITHOUT RESERVE

**AN UNUSUAL GOLD-SPLASHED TRIPOD
CENSER**

17TH/18TH CENTURY

the compressed body cast with shapely rounded lobes above three low feet, two upright loop handles on the rim, the exterior decorated with irregular splashes of gold, the base with an apocryphal Xuande mark, wood stand (2)

14 cm, 5½ in.

£ 3,000-5,000

HK\$ 31,300-52,500 US\$ 4,000-6,700

十七/十八世紀 灑金銅衝天耳三足爐
《大明宣德年製》仿款



□ 340 SOLD WITHOUT RESERVE

A LARGE BRONZE CENSER
17TH/18TH CENTURY

the compressed globular body rising from a short spreading foot to an everted rim, set at the shoulder with a pair of loop handles, the underside cast with an apocryphal six-character Xuande mark within a rectangle
31.3 cm, 12³/₈ in.

£ 5,000-7,000

HK\$ 52,500-73,000 US\$ 6,700-9,300

十七/十八世紀 銅鬲式爐

《大明宣德年製》仿款



□ 341 SOLD WITHOUT RESERVE

A GOLD-SPLASHED BRONZE CENSER
17TH/18TH CENTURY

the compressed globular body rising from a short spreading foot to an everted rim, set to either side of the body with two simple loop handles and liberally splashed with gold around the exterior, the base cast with a four-character seal mark reading *jiacang zhenbao* (family treasure)
19.5 cm, 7¾ in.

£ 2,000-3,000
HK\$ 20,900-31,300 US\$ 2,700-4,000

十七/十八世紀 銅灑金蝸耳爐
《家藏珍寶》款



341

□ 342 SOLD WITHOUT RESERVE

A CYLINDRICAL TRIPOD CENSER
QING DYNASTY, 18TH CENTURY

the cylindrical body cast around the exterior with three bands of bow strings and set on three short *ruyi* feet, the base cast with an apocryphal Xuande six-character reign mark, the metal patinated to a dark chocolate brown tone
9.5 cm, 3¾ in.

£ 6,000-8,000
HK\$ 62,500-83,500 US\$ 8,000-10,700

清十八世紀 銅弦紋奩式三足爐
《大明宣德年製》仿款



342

□ 343 SOLD WITHOUT RESERVE

A BRONZE 'LOTUS' TRIPOD CENSER
QING DYNASTY, 18TH CENTURY

the compressed tri-lobed body rising from three short conical feet to an everted rim, set with a pair of simple loop handles, the base cast with an apocryphal Xuande six-character reign mark, the metal patinated to an olive-brown tone
18 cm, 7½ in.

£ 1,000-2,000
HK\$ 10,500-20,900 US\$ 1,350-2,700

清十八世紀 銅衝天耳蓮形爐
《大明宣德年製》仿款



343

□ 344 SOLD WITHOUT RESERVE

A PARCEL-GILT BRONZE CENSER
MING DYNASTY, 17TH CENTURY

of archaic *gui* form, the compressed globular body supporting on a splayed foot, the sides flanked by a pair of mythical beast heads issuing loop handles, the main register rendered with dragons and mythical beasts, below a waisted neck decorated with *bajixiang*, the foot with a leafy floral scroll band, the base with a rectangular gilt panel engraved with a seal mark reading *Yunjian Hu Wenming zhi* (made by Hu Wenming of Yunjian)
22 cm, 8¾ in.

£ 6,000-8,000

HK\$ 62,500-83,500 US\$ 8,000-10,700

明十七世紀

局部鎏金銅飛龍海獸圖簋式爐

《雲間胡文明製》款



□ 345 SOLD WITHOUT RESERVE

A BRONZE TRIPOD CENSER AND STAND
17TH/18TH CENTURY

the compressed globular body rising from three short tapering feet to a slightly everted rim, flanked by a pair of upright loop handles, the stand in the form of a mallow flower with overlapping petals rising from three *ruyi*-head shaped feet, the base with an apocryphal four-character Xuande mark within a recessed rectangle

(2)

10.2 cm, 4 in.

£ 2,000-3,000

HK\$ 20,900-31,300 US\$ 2,700-4,000

十七/十八世紀 銅衝天耳三足爐連座
《大明宣德年製》仿款



345



346

□ 346 SOLD WITHOUT RESERVE

A BRONZE RECTANGULAR CENSER
17TH/18TH CENTURY

the compressed bulging sides rising from four legs to a waisted neck and a wide flanged rim, set with a pair of upright loop handles, the base cast with an apocryphal six-character Xuande mark

21.7 cm, 8½ in.

£ 2,000-3,000

HK\$ 20,900-31,300 US\$ 2,700-4,000

十七/十八世紀 銅四足方爐
《大明宣德年製》款

□ 347 SOLD WITHOUT RESERVE

A BRONZE TRIPOD CENSER
17TH/18TH CENTURY

the compressed globular body rising from three short spreading legs to a short ribbed neck and everted rim, the base cast with an apocryphal Xuande seal mark, the metal patinated to a warm golden-brown tone, wood stand

(2)

14 cm, 5⅝ in.

• £ 3,000-5,000

HK\$ 31,300-52,500 US\$ 4,000-6,700

十七/十八世紀 銅鬲式爐
《宣德年製》仿款



347

□ 348 SOLD WITHOUT RESERVE

**A BRONZE CENSER
17TH/18TH CENTURY**

the compressed globular body rising from a short spreading foot to an everted rim, set at the shoulder with a pair of loop handles, the underside cast with a *Yutang Qingwan* mark within a rectangle
18.3 cm, 7 $\frac{1}{6}$ in.

£ 1,000-2,000
HK\$ 10,500-20,900 US\$ 1,350-2,700

十七/十八世紀 銅蚰耳爐
《玉堂清玩》款

□ 349 SOLD WITHOUT RESERVE

**A BRONZE MAKARA-HANDLED CENSER
QING DYNASTY, 19TH CENTURY**

the compressed globular body rising from a short spreading foot to a flaring rim, set at the shoulder with a pair of makara-head handles, the metal patinated to a warm toffee tone, the base cast with an apocryphal six-character Xuande reign mark
18.5 cm, 7 $\frac{1}{4}$ in.

£ 1,000-2,000
HK\$ 10,500-20,900 US\$ 1,350-2,700

清十九世紀 銅瑞獸耳簋式爐
《大明宣德年製》仿款



348



349

□ 350 SOLD WITHOUT RESERVE

**A GOLD-SPLASHED SQUARE CENSER
QING DYNASTY, 18TH CENTURY**

the body with low rounded sides rising from four short legs to a broad circular mouth, set at the shoulder with a pair of small lion-head mask handles and decorated around the exterior with gold splashes, the base with a four-character mark reading *Yongshi baoyong*, wood stand

(2)

12 cm, 4¾ in.

£ 2,000-3,000

HK\$ 20,900-31,300 US\$ 2,700-4,000

清十八世紀 灑金銅獅首四足方爐
《永世寶用》款

□ 351 SOLD WITHOUT RESERVE

**A GOLD-SPLASHED BRONZE 'CHILONG'
CENSER**

17TH CENTURY

the oval body with shallow flaring sides rising from four cloud scroll feet, set at either end with a high relief chilong handle and liberally splashed in gold around the exterior, the base with an apocryphal six-character Xuande reign mark

16.5 cm, 6½ in.

£ 2,000-3,000

HK\$ 20,900-31,300 US\$ 2,700-4,000

清十七世紀 灑金銅螭龍耳四足爐
《大明宣德年製》仿款



350



351



352

□ 352 SOLD WITHOUT RESERVE

**A BRONZE DRAGON-HANDLED CENSER
QING DYNASTY, 19TH CENTURY**

the deep rounded sides rising from a short spreading foot to a short neck and everted rolled rim, set at the shoulder with a pair of dragon-head handles, the base cast with an apocryphal inscription reading *Xuande wunian Wu Bangzuo Zao* ('Made by Wu Bangzuo in the Fifth Year of the Xuande reign'), the metal patinated to a warm toffee tone
14.5 cm, 5¾ in.

£ 600-800
HK\$ 6,300-8,400 US\$ 800-1,100

清十九世紀 銅瑞獸耳爐
《宣德五年吳邦佐造》仿款

□ 353 SOLD WITHOUT RESERVE

**A BRONZE TRIPOD CENSER
17TH/18TH CENTURY**

the compressed globular body rising from three short conical legs to a short neck, the everted rim set with two simple loop handles, the base cast with an apocryphal Xuande six-character reign mark, the metal patinated to a rich even golden-brown tone
12 cm, 4¾ in.

£ 1,000-2,000
HK\$ 10,500-20,900 US\$ 1,350-2,700

十七/十八世紀 銅衝天耳三足爐
《大明宣德年製》仿款



353

□ 354 SOLD WITHOUT RESERVE

**A SMALL BRONZE CENSER
17TH/18TH CENTURY**

the compressed globular body rising from a short spreading foot to a flaring neck and rim, set at the shoulder with a pair of simple loop handles, the base cast with a four-character mark reading *Yutang zhenwan*, the metal patinated to a rich dark toffee tone
13.6 cm, 5⅜ in.

£ 1,000-2,000
HK\$ 10,500-20,900 US\$ 1,350-2,700

十七/十八世紀 銅蚰耳爐
《玉堂珍玩》款



354

□ 355 SOLD WITHOUT RESERVE

A LARGE BRONZE CENSER
17TH/18TH CENTURY

the compressed globular body rising from a short spreading foot to an everted rim, set at the shoulder with a pair of loop handles, the underside cast with an apocryphal six-character Xuande mark within a rectangle, the metal patinated to a warm golden-brown tone
22.6 cm, 8⁷/₈ in.

£ 3,000-5,000

HK\$ 31,300-52,500 US\$ 4,000-6,700

十七/十八世紀 銅蚰耳爐
《大明宣德年製》仿款





356

356

PROPERTY FROM A SPANISH PRIVATE COLLECTION

**A LARGE PAIR OF CLOISSONNÉ ENAMEL
CRANES**

QING DYNASTY

each with long legs standing on an oval wood base with the wings neatly tucked around the body, the red-crested head with long beak supported on an elegant arched detachable neck

(4)

77 cm, 30½ in.

W £ 1,000-2,000

HK\$ 10,500-20,900 US\$ 1,350-2,700

清 掐絲琺瑯仙鶴一對

357

**A LARGE AND UNUSUAL BASSE-TAILLE
PAINTED ENAMEL OCTAGONAL SWEETMEAT
BOX AND COVER**

QING DYNASTY, QIANLONG PERIOD

the straight-sides slightly stepped and domed cover decorated in green and aubergine enamels on a bright blue ground, with a central medallion of gilded bats in flight over a floral scroll ground, the straight-sided box similarly decorated and supported on four *ruyi*-shaped feet, the interior with a circular footed tray, surrounded by eight footed trays similarly decorated, the interior of the box and cover and the undersides of the trays enameled yellow

(11)

35 cm, 13½ in.

PROVENANCE

An American Collection, purchased in the 1960's.

± £ 5,000-7,000

HK\$ 52,500-73,000 US\$ 6,700-9,300

清乾隆 琺瑯貼金片福祿雙全紋攢盒

來源

美國私人舊藏，於1960年代購入



357

358

**A PAIR OF CANTON ENAMEL 'LANDSCAPE'
VASES**

**QING DYNASTY, YONGZHENG/QIANLONG
PERIOD**

each of rectangular section, rising from a stepped foot to a broad rounded shoulder and surmounted by a waisted neck, brightly enamelled to the front and back panels enclosing landscape set with pavilions, jagged rocks issuing gnarled trees and mountains, the sides decorated with birds amidst floral sprays, all reserved against a stone pattern ground, the white base enamelled in puce with a stylised peony

(2)

23.8 and 23.6 cm, 9⅜ and 9¼ in.

£ 6,000-8,000

HK\$ 62,500-83,500 US\$ 8,000-10,700

清雍正/乾隆 廣東銅胎畫琺瑯開光山水
花鳥圖瓶一對



358

359

**A GOLD-SPLASHED BRONZE VASE
QING DYNASTY, 19TH CENTURY**

of square section raised on a tall foot and rising to a flared rim, the shoulders flanked by animal-mask handles, the bronze of a dark brown patina scattered with bright gilt splashes of varying size, the base with a two-character apocryphal Xuande mark
16.5 cm, 6½ in.

£ 6,000-8,000
HK\$ 62,500-83,500 US\$ 8,000-10,700

清十九世紀 銅灑金獸耳方壺
《宣德》仿款



359

360

**A BRONZE TRIPOD CENSER
QING DYNASTY, 18TH CENTURY**

the globular body supported on three tubular legs issuing from mythical animal masks, rising to an everted rim set with two upright loop handles, the exterior decorated with stylised *taotie* masks divided by two raised vertical flanges, below a band of archaic bird motifs, all reserved on a *leiwen* ground, wood cover and stand
(3)

46.9 cm, 18½ in.

† £ 3,000-5,000
HK\$ 31,300-52,500 US\$ 4,000-6,700

清十八世紀 銅饕餮紋三足鬲式爐



360



361

361

PROPERTY FROM A EUROPEAN PRIVATE COLLECTION

**A BLUE AND WHITE 'BOYS' JAR
QING DYNASTY, KANGXI PERIOD**

the ovoid body rising from a short straight foot to a slightly waisted neck, painted to the exterior with boys engaged in various pursuits in a garden, all between a band of stylised floral panels at the shoulder and a band of flower petals above the foot, the base with a stylised rabbit in underglazed blue

14.9 cm, 5¾ in.

£ 4,000-6,000

HK\$ 41,700-62,500 US\$ 5,400-8,000

清康熙 青花嬰戲圖罐



362

362

**A BLUE AND WHITE 'IMMORTALS' SQUARE JAR
MING DYNASTY, JIAJING PERIOD**

of square section, rising from a flat base to an angled shoulder and a slightly waisted neck, elaborately painted to the body with immortals holding respective attributes amidst scrolling clouds and rolling waves, below a band of *shou* roundels alternating with *ruyi*-clouds at the shoulder and neck, a band of floral border near the foot

33.1 cm, 13 in.

£ 5,000-7,000

HK\$ 52,500-73,000 US\$ 6,700-9,300

明嘉靖 青花四仙拱壽圖方罐

363

**A PAIR OF BLUE AND WHITE 'DRAGON' JARS
AND COVERS**
QING DYNASTY, 19TH CENTURY

each of baluster form, painted around the exterior with a pair of ferocious four-clawed dragons writhing amongst scrolling clouds, in pursuit of a 'flaming pearl', above a band of crashing waves at the foot, the rim painted with a border of *lingzhi*, the cover surrounded with a finial and decorated with scrolling clouds

(4)

The jars: 48.5 cm, 19 $\frac{1}{8}$ in.

W £ 6,000-8,000

HK\$ 62,500-83,500 US\$ 8,000-10,700

清十九世紀 青花趕珠雲龍紋蓋罐一對



363

364

THREE BLUE AND WHITE 'DRAGON' BOWLS
JIAJING SEAL MARK AND PERIOD

the deep rounded sides rising from a short foot to an everted rim, painted to the exterior with two sinuous five-clawed dragons striding amidst floral sprigs above turbulent waves, the base inscribed with a six-character seal mark in underglaze blue

(3)

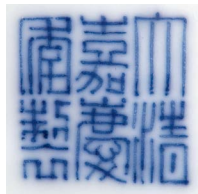
12.9 cm, 5 $\frac{1}{8}$ in.

† £ 4,000-6,000

HK\$ 41,700-62,500 US\$ 5,400-8,000

清嘉慶 青花穿花雲龍紋盃一組三件

《大清嘉慶年製》款



mark (part lot)



364



365

365

**A YELLOW-GLAZED INCISED 'DRAGON' VASE
QING DYNASTY, 19TH CENTURY
ZAI FU TANG ZHI MARK**

the slightly spreading foot rising to a globular body and tall cylindrical neck, incised with three four-clawed dragons contesting a 'flaming pearl', covered in a deep yellow glaze, the base inscribed in iron-red with a four character *Zaifutang zhi* hall mark
35.9 cm, 14 $\frac{1}{8}$ in.

£ 2,000-3,000
HK\$ 20,900-31,300 US\$ 2,700-4,000

清十九世紀 黃釉刻雲龍紋長頸瓶
《載福堂製》款

366

**A FLAMBÉ-GLAZED MOONFLASK
QING DYNASTY, QIANLONG PERIOD
SI GAN CAO TANG HALL MARK**

the flattened globular body rising from a short oval foot to a waisted neck and a metal-bound rim, flanked by a pair of *chilong* handles, covered overall with a brilliant rich purple glaze with milky-blue and lavender streaks, the base with a four-character mark in underglaze blue
31.5 cm, 12 $\frac{3}{8}$ in.

± £ 5,000-7,000
HK\$ 52,500-73,000 US\$ 6,700-9,300

清乾隆 窯變釉螭龍耳抱月瓶
《斯干草堂》款



366

367

**A COPPER-RED GLAZED BOWL
QIANLONG SEAL MARK AND PERIOD**

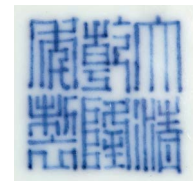
the deep rounded sides rising from a short straight foot, covered overall with a deep red glaze thinning to white at the rim and foot, the base with a six-character seal mark in underglaze blue
12.3 cm, 4 $\frac{7}{8}$ in.

± £ 3,000-5,000
HK\$ 31,300-52,500 US\$ 4,000-6,700

清乾隆 霽紅釉盤
《大清乾隆年製》款



367



mark

A CARVED CINNABAR LACQUER 'FIGURAL' BOX AND COVER

QING DYNASTY, 18TH CENTURY

of circular section, the cover carved in relief with a central figure leading a horse towards a boy in an idyllic mountainscape, the sides of the box and cover all decorated with diaper patterns, the interiors and base lacquered black (2)

13.7 cm, 5 $\frac{3}{8}$ in.

£ 3,000-5,000

HK\$ 31,300-52,500 US\$ 4,000-6,700

清十八世紀 剔紅牽馬圖蓋盒



368

369

A RARE 'QIANGJIN' AND 'TIANQI' LACQUER 'CARP' BOX AND COVER

MING DYNASTY, WANLI PERIOD

of circular section, the cover incised and painted in the *qiangjin* technique and further detailed in *tianqi* polychrome enamels, decorated with a large carp emerging from turbulent waves against a diaper ground, the sides decorated with further wave motifs, the interiors and base lacquered red, the base with an apocryphal eight character Wanli mark (2)

10.9 cm, 4 $\frac{1}{4}$ in.

± £ 4,000-6,000

HK\$ 41,700-62,500 US\$ 5,400-8,000

明萬曆 餞金填漆鯉躍龍門蓋盒



369

370

PROPERTY FROM A SPANISH PRIVATE COLLECTION

A CARVED CINNABAR LACQUER BOX AND COVER

QING DYNASTY, QIANLONG PERIOD

of lobed form, the cover crisply carved with various flower blossoms against a diaper ground all enclosed by a keyfret border, the box similarly carved with a diaper ground, the interior and base lacquered black

(2)

13.1 cm, 5 $\frac{1}{4}$ in

£ 3,000-5,000

HK\$ 31,300-52,500 US\$ 4,000-6,700

清乾隆 剔紅花卉紋花式蓋盒



370



371

371

A CELADON JADE FIGURE OF A QILIN

carved recumbent, the mythical beast with its hooves tucked beneath its body, portrayed with bulging eyes and a pair of horns, the body rendered with a bushy tail swept up against its scaly haunches

4.5 cm, 1¾ in.

£ 800-1,200

HK\$ 8,400-12,500 US\$ 1,100-1,600

青玉雕麒麟

372

PROPERTY FROM AN ENGLISH PRIVATE COLLECTION

**A PALE CELADON JADE 'HEHE ERXIAN'
BOULDER**

QING DYNASTY, 18TH CENTURY

the jagged mountainscape with the Hehe erxian crossing a bridge beneath a pine tree, one opening a cloud emitting bag, the other holding plantain leaves, the reverse with a spotted deer, the polished stone of a pale celadon tone with russet highlights, wood stand

(2)

12 cm, 4¾ in.

• £ 5,000-7,000

HK\$ 52,500-73,000 US\$ 6,700-9,300

清十八世紀 青白玉和合二仙圖山子



372

373

**A PALE CELADON JADE 'DRAGON' RHYTON
17TH CENTURY**

the tapering trumpet-form vessel issuing from a dragon head with scales finely detailed, decorated in low-relief with stylised *lingzhi*-shaped scrolls, accompanied by three lively *chilong* with curling bifurcated tails in high-relief clambering upwards, one of which rests its paw and head on the rim, the stone of an even greyish-celadon tone with some brown inclusions

14.3 cm, 5⅝ in.

£ 3,000-5,000

HK\$ 31,300-52,500 US\$ 4,000-6,700

十七世紀 青白玉龍首觥



373

374

A CARVED BAMBOO 'MAGNOLIA' LIBATION CUP

QING DYNASTY, 19TH CENTURY

the deep flaring sides carved in high relief and openwork in the form of a trunk section of a gnarled tree, the bark detailed with knots, wrapped around the sides with branches laden with clusters of magnolia blooms and buds, the interior lined with silver-coloured metal
14.4 cm, 5 $\frac{5}{8}$ in.

£ 2,000-3,000

HK\$ 20,900-31,300 US\$ 2,700-4,000

清十九世紀 竹雕玉蘭花紋樽式盃



374



375

375

A CARNELIAN AGATE CARVING OF A QILIN
QING DYNASTY, 18TH/19TH CENTURY

depicted recumbent, the vermillion-red sections of the stone skilfully carved as its slightly turned head, with a *lingzhi* stem in its mouth, detailed with a snout flanked by curling whiskers below a pair of bulging eyes and a prominent horn, a smaller mythical beast clambering and a curled upswept tail at the rear, the milky-white part of the stone forming its muscular body and a pronounced spine, wood stand (2)

9.8 cm, 3 $\frac{7}{8}$ in.

£ 3,000-5,000

HK\$ 31,300-52,500 US\$ 4,000-6,700

清十八/十九世紀 南紅瑪瑙雕麒麟

376

A 'HUANGHUALI' BRUSHPOT
QING DYNASTY, 18TH/19TH CENTURY

of cylindrical form, the thick walls rising from a flat base, the rich patina highlighting fluid dark brown streaks
19 cm, 7 $\frac{1}{2}$ in.

• £ 2,000-4,000

HK\$ 20,900-41,700 US\$ 2,700-5,400

清十八/十九世紀 黃花梨筆筒



376

377

PROPERTY FROM A SPANISH PRIVATE COLLECTION

**A SET OF THREE ALBUMS OF PAINTINGS
QING DYNASTY, 19TH CENTURY**

comprising three albums, each depicting various flowers,
butterflies and exotic birds

(3)

largest 19.3 by 31.2 cm, 7⁵/₈ by 12¹/₄ in.

£ 1,800-2,200

HK\$ 18,800-23,000 US\$ 2,400-2,950

清十九世紀 外銷通草冊頁一組三件



377 (part lot)



378

378

**A SCHOLARLY GATHERING IN THE GARDEN
QING DYNASTY, 19TH CENTURY**

ink and colour on paper, with two seals of the artist, dated
the fourth month of 1872.

Inscribed by Xu Fangzeng and dated the twelfth month of
1874

the painting 84.2 by 150 cm, 33¹/₈ by 59 in.

£ 3,000-5,000

HK\$ 31,300-52,500 US\$ 4,000-6,700

清十九世紀 《西元雅集》設色紙本立
軸

379

**AN ALBUM OF TWELVE EROTIC PAINTINGS
QING DYNASTY, 19TH CENTURY**

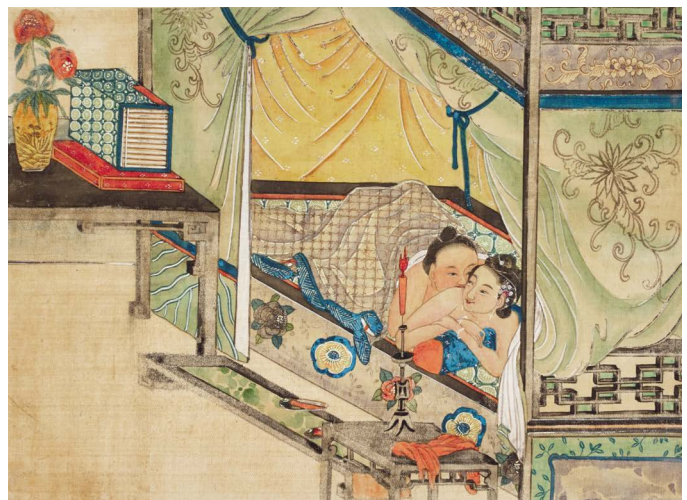
comprising twelve ink and colour paintings on paper, of
couples engaged in amorous pursuits, all between wood
covers

each leaf 19 by 26 cm, 7¹/₂ by 10¹/₄ in.

£ 6,000-8,000

HK\$ 62,500-83,500 US\$ 8,000-10,700

清十九世紀 《春宮圖》設色紙本十二
開



379 (part lot)

A LARGE FAMILLE-ROSE CHARGER

the rounded sides rising from a short tapering foot to an everted rim, finely enamelled to the exterior with two gnarled branches of magnolia and prunus, extending around the curve of the dish and over the rim into the interior, entwined with a smaller flowering rose and *lingzhi* sprigs, the base with an apocryphal six-character mark in underglaze-blue
54 cm, 21¼ in.

W £ 6,000-8,000

HK\$ 62,500-83,500 US\$ 8,000-10,700

粉彩過牆花卉紋大盤



PROPERTY OF A EUROPEAN LADY

LOTS 381-467



381



383



382

381

A FAMILLE-VERTE DISH QING DYNASTY, KANGXI PERIOD

the shallow rounded sides rising from a short tapering foot, brightly enamelled to the interior with a mother and child on a fenced terrace, the exterior with three prunus sprays
23.4 cm, 9¼ in.

£ 1,000-2,000

HK\$ 10,500-20,900 US\$ 1,350-2,700

清康熙 五彩仕女圖盤

382

A FAMILLE-VERTE 'ROMANCE OF THE WESTERN CHAMBER' DISH QING DYNASTY, KANGXI PERIOD

the gently rounded sides rising from a short straight foot, boldly enamelled with a scene from the *Romance of the Western Chamber*, all encircled by panelled auspicious symbols reserved against green stippled ground, the reverse decorated with further auspicious motifs, the base with an apocryphal four-character Xuande mark within a double circle
34.1 cm, 13¾ in.

£ 2,000-3,000

HK\$ 20,900-31,300 US\$ 2,700-4,000

清康熙 五彩西廂記圖盤

383

A LARGE FAMILLE-VERTE 'LANDSCAPE' DISH QING DYNASTY, KANGXI PERIOD

well potted with rounded sides supported on a tapered foot, brightly painted to the interior with a landscape scene and detailed with a recluse seated in a pavilion and looking out at the tranquil river, the exterior decorated with further rockwork, the base with a conch shell within a double circle
36.3 cm, 14¼ in.

£ 1,000-2,000

HK\$ 10,500-20,900 US\$ 1,350-2,700

清康熙 五彩山水亭廊圖盤



384



386



385

384

**A FAMILLE-VERTE 'FIGURAL' DISH
QING DYNASTY, KANGXI PERIOD**

the shallow sides gently curving to a gently flared rim, painted to the interior with three figures amidst mountainscape, the exterior decorated with rockwork, the base with an apocryphal six-character Chenghua mark within a double circle
26.4 cm, 10³/₈ in.

£ 3,000-5,000
HK\$ 31,300-52,500 US\$ 4,000-6,700

清康熙 五彩人物故事圖盤

385

**A FAMILLE-VERTE 'FIGURAL' DISH
QING DYNASTY, KANGXI PERIOD**

the deep rounded sides rising from a short tapering foot to an everted rim, painted to the interior with ladies engaged in various agricultural activities, encircled at the rim by six panels enclosing various emblems reserved on diaper and floral bands
26.8 cm, 10¹/₂ in.

£ 3,000-5,000
HK\$ 31,300-52,500 US\$ 4,000-6,700

清康熙 五彩耕織圖盤

386

**A LARGE FAMILLE-VERTE 'MAGU' DISH
QING DYNASTY, KANGXI PERIOD**

well potted with rounded sides rising from a tapered foot to a flared rim, brightly painted to the interior with the goddess of longevity holding a flower basket and a *lingzhi* sprig together with a deer on her side, all set within a landscape of trees and rockwork
38.2 cm, 15 in.

£ 4,000-6,000
HK\$ 41,700-62,500 US\$ 5,400-8,000

清康熙 五彩麻姑獻壽圖大盤

387

**A GILT-DECORATED BLACK-GROUND
YEN YEN VASE, QING DYNASTY,
18TH/19TH CENTURY**

the baluster body rising from a spreading foot to a tall trumpet neck, decorated around the exterior with gilt kylin, dragons and phoenix reserved on a glossy black ground
46.5 cm, 18¼ in.

£ 800-1,200
HK\$ 8,400-12,500 US\$ 1,100-1,600

清十八十九世紀 烏金釉描金鳳
尾尊



387

388

**A LARGE IRON-RED ROULEAU VASE
QING DYNASTY, 18TH/19TH
CENTURY**

the cylindrical body rising from a short straight foot to an angled shoulder and tall neck with broad everted rim, finely painted around the exterior in iron-red with scholars and children on a terrace
61.5 cm, 24 in.

£ 1,500-2,500
HK\$ 15,700-26,100 US\$ 2,000-3,350

清十八十九世紀 礬紅人物故事
圖棒槌瓶



388

389

**A GILT-BRONZE MOUNTED
FAMILLE-VERTE YEN YEN VASE,
QING DYNASTY, 18TH/19TH
CENTURY**

the baluster body rising from a spreading foot to a tall trumpet neck, brightly enamelled around the exterior with beautiful maidens and young boys at play within a rocky landscape, the foot with European gilt-bronze mount
46 cm, 18¼ in.

£ 800-1,200
HK\$ 8,400-12,500 US\$ 1,100-1,600

清十八十九世紀 五彩仕女嬰戲
圖鳳尾尊



389

390

**A BLUE AND WHITE YEN YEN VASE
QING DYNASTY, KANGXI PERIOD**

the baluster body rising from a spreading foot to a tall trumpet neck, painted around the exterior in rich cobalt-blue tones with figures in a river landscape
45.5 cm, 17½ in.

PROVENANCE

Christie's London, 1st March 2011, lot 37.

£ 3,000-5,000

HK\$ 31,300-52,500 US\$ 4,000-6,700

清康熙 青花山水人物圖鳳尾尊

來源

倫敦佳士得2011年3月1日，編號37



390

391

**A BLUE AND WHITE 'LANDSCAPE'
VASE, QING DYNASTY, KANGXI PERIOD**

sturdily potted with a tall baluster body rising from a spreading foot to a straight neck and galleried rim, painted with scholars amidst a continuous landscape scene, the neck with bands of dots, keyfret and cloud scrolls
44 cm, 17¾ in.

£ 3,000-5,000

HK\$ 31,300-52,500 US\$ 4,000-6,700

清康熙 青花山水人物圖觀音尊



391

392

**A BLUE AND WHITE 'EIGHT
IMMORTALS' YEN YEN VASE QING
DYNASTY, 18/19TH CENTURY**

the baluster body rising from a spreading foot to a tall trumpet neck, brightly painted around the exterior with shaped panels enclosing the Eight Immortals, all reserved on a diaper ground, underglaze blue artemisia leaf to the base
45 cm, 17½ in.

PROVENANCE

Christie's London, 29th February 2012, lot 700.

£ 800-1,200

HK\$ 8,400-12,500 US\$ 1,100-1,600

清十八十九世紀 青花八仙拱壽圖鳳尾尊

來源

倫敦佳士得2012年2月29日，編號700



392



393

393

**A LARGE BLUE AND WHITE 'LOTUS' JAR
MING DYNASTY, JIAJING PERIOD**

sturdily potted with a tapered ovoid body rising to a short, waisted neck and everted rim, densely painted to the exterior with large lotus blooms borne on meandering leafy stems, all between a band of *ruyi* roundels enclosing various auspicious emblems to the shoulder and a band of lappet to the foot, the neck decorated with scrolling foliage
47 cm, 18½ in.

£ 6,000-8,000

HK\$ 62,500-83,500 US\$ 8,000-10,700

明嘉靖 青花纏枝蓮紋大罐

394

**A LARGE BLUE AND WHITE 'SHOU' MEIPING
MING DYNASTY, WANLI PERIOD**

the baluster body rising from a spreading base to a short narrow neck with rolled rim, painted around the exterior with *shou* medallions amidst lotus and *ruyi* clouds, the shoulder with a lotus-filled *ruyi* collar
46 cm, 18 in.

£ 6,000-8,000

HK\$ 62,500-83,500 US\$ 8,000-10,700

明萬曆 青花壽字蓮紋梅瓶



394

395

**A REVERSE-DECORATED BLUE AND WHITE
'DRAGON' DISH
CHUXIUGONG SEAL MARK, QING DYNASTY,
GUANGXU PERIOD**

the rounded sides rising from short foot to a slightly everted rim, decorated to the center of the interior with a five-clawed dragon leaping amidst clouds and flames in pursuit of a flaming pearl, with two further dragons to the well, the exterior similarly decorated, the base with a four-character mark in underglaze blue
32.1 cm, 12 $\frac{5}{8}$ in.

£ 2,000-3,000
HK\$ 20,900-31,300 US\$ 2,700-4,000

清光緒 青花雲龍戲珠紋盤
《儲秀宮製》款



mark



395



396

396

**A SMALL BLUE AND WHITE 'SILKWORM' CUP
REPUBLICAN PERIOD**

the conical sides rising from a short straight foot, painted to the exterior with silkworms and mulberry leaves, the base with a six-character mark within a circle in underglaze blue
Diameter 6.6 cm, 2 $\frac{5}{8}$ in.

£ 400-600
HK\$ 4,200-6,300 US\$ 550-800

民國 青花蠶蟲桑葉紋小杯
《江西瓷業公司》款



mark

397

**A BLUE AND WHITE INGOT-SHAPED DISH
QIANLONG SEAL MARK AND PERIOD**

of ingot shape, densely painted to the interior with a central lotus blossom amidst scrolling foliage surrounded by four flying bats, the exterior similarly decorated with further lotuses, the base with a six-character seal mark in underglaze blue
18.1 cm, 7 $\frac{1}{8}$ in.

£ 2,000-3,000
HK\$ 20,900-31,300 US\$ 2,700-4,000

清乾隆 青花纏枝蓮紋茶船
《大清乾隆年製》款



mark



397



398

398

**A FAHUA 'FIGURAL' MEIPING
MING DYNASTY, 16TH CENTURY**

with a tapering body sweeping up to a rounded shoulder surmounted by a waisted neck and everted rim, painted to the exterior with a sage drifting towards a pavilion enshrouded in clouds approached by an attendant carrying a wrapped *qin*, between a *ruyi*-collar enclosing lotus blooms at the shoulder and a lappet band below, glazed in aubergine, turquoise and yellow reserved against a deep blue ground 30 cm, 11³/₄ in.

£ 4,000-6,000

HK\$ 41,700-62,500 US\$ 5,400-8,000

明十六世紀 瑤華攜琴訪友圖梅瓶

399

**A LARGE FAHUA JAR
LATE MING DYNASTY**

the baluster body rising from a gently splayed foot to a rounded shoulder surmounted by a short neck and lipped rim, decorated to the body with figures on horseback accompanied by attendants, riding towards a pavilion enveloped in clouds, above a band of lappets around the foot, the shoulders with a *ruyi*-band each enclosing auspicious emblems, all reserved on a dark blue-glazed ground, the interior glazed green 32 cm, 12⁵/₈ in.

£ 2,000-3,000

HK\$ 20,900-31,300 US\$ 2,700-4,000

晚明 瑤華人物故事圖罐



399

400

**A WUCAI SEATED FIGURE OF GUAN YU
MING DYNASTY**

modelled seated on a raised plinth with the feet shoulder-width apart and the right hand resting on the knee and the left hand held against his chest, the face with a fierce expression and a long beard, the head covered in a tall official's cap with a raised back, wearing a voluminous robe centred with a roundel over the rotund belly illustrating a dragon pursuing a 'flaming pearl', the reverse with a dragon in frontal pose, and further dragons and *ruyi*-clouds to the robe, all reserved against a green ground 28 cm, 11 in.

£ 3,000-5,000

HK\$ 31,300-52,500 US\$ 4,000-6,700

明 五彩關羽坐像



400

401

**A FAHUA MEIPING
MING DYNASTY, 16TH CENTURY**

with a tapering body sweeping up to a rounded shoulder surmounted by a waisted neck and everted rim, painted to the exterior with a sage drifting towards a pavilion enshrouded in clouds approached by an attendant carrying a wrapped *qin*, between a *ruyi*-collar enclosing lotus blossoms at the shoulder and a lappet band below, covered overall in green and brown glazes
31.4 cm, 12³/₈ in.

£ 1,000-2,000
HK\$ 10,500-20,900 US\$ 1,350-2,700

明十六世紀 珐華褐釉綠彩攜琴訪友圖
梅瓶



401

402

**A TURQUOISE-GLAZED FAHUA JAR
LATE MING DYNASTY**

the baluster body rising from a gently splayed foot to a rounded shoulder surmounted by a short neck and a lipped rim, boldly decorated to the body with two scenes of the Daoist philosopher Laozi setting off on his donkey and transmitting his teachings, all reserved on a turquoise-glazed ground, the interior glazed green
31.6 cm, 12³/₈ in.

£ 3,000-5,000
HK\$ 31,300-52,500 US\$ 4,000-6,700

晚明 珐華孔雀綠釉老子說經圖罐



402

403

A 'FAHUA' ELEPHANT-FORM VASE

modelled as a recumbent elephant with beaded garlands and caparisoned in tasselled mantles all below a raised support, covered overall with aubergine blue, green and yellow glazes, wood stand
31.5 cm, 12³/₈ in.

£ 600-800
HK\$ 6,300-8,400 US\$ 800-1,100

珐華瑞象形花插



403



404

404

**A 'JUN' TRIPOD CENSER
SONG DYNASTY**

the compressed globular body rising from three short conical feet to a broad everted rim, covered overall with a thick and glossy lavender-blue glaze
6.5 cm, 2½ in.

£ 1,000-2,000
HK\$ 10,500-20,900 US\$ 1,350-2,700

宋 鈞窑天藍釉三足爐

405

**A STUDY GROUP OF SONG AND JIN CERAMICS
SONG/JIN DYNASTY**

comprising: a 'Jian' 'hares-fur' bowl; a combed 'Yaozhou' bowl; a 'Longquan' 'lotus' bowl; a Cizhou 'partridge-feather' bowl; and a 'Ding' 'lotus' saucer dish
(5)

The largest: 14 cm, 5½ in.

£ 4,000-6,000
HK\$ 41,700-62,500 US\$ 5,400-8,000

宋/金 瓷器一組五件



405



406

406

**A 'JUN' DISH
JIN DYNASTY**

the shallow rounded sides rising from a short straight foot to a slightly incurved rim, covered overall in a thick bright lavender-blue glaze
15 cm, 5¾ in.

£ 1,000-2,000
HK\$ 10,500-20,900 US\$ 1,350-2,700

金 鈞窑天藍釉小盤

**A 'LONGQUAN' CELADON BARBED CHARGER
MING DYNASTY, 15TH CENTURY**

the heavily-potted shallow rounded sides rising from a short tapering foot to an everted barbed rim, carved to the interior with a cash diaper medallion encircled by scrolling lotus, covered overall in a thick bluish-green glaze
36.2 cm, 14¼ in.

£ 3,000-5,000

HK\$ 31,300-52,500 US\$ 4,000-6,700

明十五世紀 龍泉窰青釉劃花菱口盤





408

408

A LARGE GE-TYPE VASE, QING DYNASTY

robustly potted with deep rounded sides rising to an angled shoulder and surmounted by a tall straight neck, covered overall with a pale-grey glaze suffused with black and golden crackles

46 cm, 18 $\frac{1}{8}$ in.

£ 1,000-2,000

HK\$ 10,500-20,900 US\$ 1,350-2,700

清 仿哥釉長頸瓶

409

**A FLAMBÉ-GLAZED BOTTLE VASE
QIANLONG SEAL MARK AND PERIOD**

with the compressed body rising from a spreading foot to a tall neck flaring at the rim, applied overall save for the base with a vitreous burgundy-red glaze streaked with deep lavender-blue, the base incised with a six-character seal mark and covered with a pale brown wash

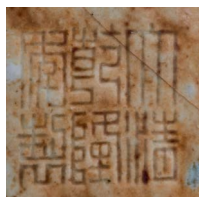
41.5 cm, 16 $\frac{3}{8}$ in.

£ 8,000-12,000

HK\$ 83,500-125,000 US\$ 10,700-16,000

清乾隆 窯變釉長頸瓶

《大清乾隆年製》款



mark



409

410

**A GE-TYPE SQUARE VASE
QING DYNASTY, 18TH/19TH CENTURY**

the square body rising from a short foot to a sloped shoulder and a straight neck, flanked by a pair of *ruyi*-shaped handles to each side, covered overall with a soft grey glaze suffused with a matrix of black and golden crackles

22 cm, 8 $\frac{5}{8}$ in.

£ 1,000-2,000

HK\$ 10,500-20,900 US\$ 1,350-2,700

清十八/十九世紀 仿哥釉四方瓶



410

411

**A PAIR OF FAMILLE-VERTE PLAQUES,
QING DYNASTY**

each of rectangular form, brightly enamelled with a landscape scene portraying figures engaged in various pursuits amongst tall mountains, all framed within a diaper-ground border, wood framed

(2)

overall 17.5 by 37 cm, 6⁷/₈ by 14¹/₂ in.

£ 3,000-5,000

HK\$ 31,300-52,500 US\$ 4,000-6,700

清 五彩山水人物圖瓷板



411



412

412

**A LARGE POLYCHROME ENAMELLED
'BUDDHIST LION' JAR
QING DYNASTY, SHUNZHI PERIOD**

the baluster body rising from a flat base to a short neck with everted rim, brightly enamelled around the exterior with four lions playing amidst leafy scrolling peony, all between lotus-lappet and diaper bands and below a *ruyi* collar, wood cover

(2)
45.5 cm, 18 in.

PROVENANCE

Drouot, Paris, 22nd March 1976.

£ 3,000-5,000

HK\$ 31,300-52,500 US\$ 4,000-6,700

清順治 五彩瑞獅圖大罐

來源

Drouot, 巴黎, 1976年3月22日

413

**A PAIR OF FAMILLE-ROSE PLAQUES
20TH CENTURY**

each rectangular plaque finely enamelled with a landscape scene and accompanying calligraphic inscription, bone-inlaid wood frames

(2)

35.5 by 23.5 cm, 14 by 9¹/₄ in.

PROVENANCE

Drouot, Paris, 20th November 2009.

£ 800-1,200

HK\$ 8,400-12,500 US\$ 1,100-1,600

二十世紀 粉彩瓷板一對

來源

Drouot, 巴黎, 2009年11月20日



413

**A BLUE-GROUND YELLOW-ENAMELLED
'DRAGON' DISH
QIANLONG SEAL MARK AND PERIOD**

the gently rounded sides rising from a short tapering foot to an everted rim, painted to the centre with a yellow-enamelled scaly five-clawed dragon in pursuit of a flaming pearl, encircled at the well and to the exterior by two similar dragons, all reserved on a rich cobalt-blue ground, the base with a six-character reign mark in underglaze blue

25.1 cm, 9¾ in.

£ 5,000-7,000

HK\$ 52,500-73,000 US\$ 6,700-9,300

清乾隆 藍地黃龍戲珠圖盤

《大清乾隆年製》款



mark



**A FINELY ENAMELLED DOUCAI AND
FAMILLE-ROSE 'SANDUO' BOWL
YONGZHENG MARK AND PERIOD**

the steep rounded sides rising from a short straight foot to an everted rim, finely enamelled around the exterior and outlined in underglaze cobalt-blue with touches of *famille rose* with three fruiting sprays of pomegranate, finger-citron and lychee, all together constituting the auspicious *san duo* or 'Three Abundances', the foliage of each in two tones of green, the interior with a leafy cluster of two peaches in shaded apple-green and iron-red below an iron-red bud and flower, within double lines repeated at the rim

16 cm, 6¼ in.

PROVENANCE

The K'ung Hsiang-Hsi (Kong Xiangxi, 1881-1967) Collection, New York, and thence by descent within the family.

Christie's New York, 17th September 2015, lot 2025.

£ 3,000-5,000

HK\$ 31,300-52,500 US\$ 4,000-6,700

清雍正 鬪彩加粉彩三多紋碗
《大清雍正年製》款

來源

孔祥熙（1881-1968）收藏，此後家族傳承

紐約佳士得2015年9月17日，編號2025



mark





416

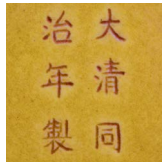
416A

**AN INCISED YELLOW-GROUND 'DRAGON'
MEIPING
TONGZHI MARK AND PERIOD**

the tapering baluster body rising from a recessed base to a short narrow waisted neck with everted rim, incised around the exterior with a pair of scaly five-clawed dragon in pursuit of a flaming pearl, all reserved on a rich yellow ground, the base incised with the six-character mark

26 cm, 10¼ in.
£ 4,000-6,000
HK\$ 41,700-62,500 US\$ 5,400-8,000

清同治 黃釉刻雲龍紋梅瓶
《大清同治年製》款



mark



417

416

**A FAMILLE-ROSE 'THREE STAR GODS' VASE
QING DYNASTY, 18TH/19TH CENTURY**

the slightly curved sides rising from a high spreading foot to a tall waisted neck with galleried rim, painted to the body with the Three Star Gods and boys in a garden, the neck with a scholar and boys

37 cm, 14½ in.
£ 1,000-2,000
HK\$ 10,500-20,900 US\$ 1,350-2,700

清十八十九世紀 粉彩三星送子圖盤口瓶



416A

417

**A SMALL BLUE AND WHITE AND IRON-RED
CUP**

QING DYNASTY, 18TH CENTURY

the deep rounded sides rising from a short straight foot to a gently flared rim, painted to the exterior with two fruits in iron-red amidst crashing waves, the base with an apocryphal six-character Chenghua mark within a double square

5 cm, 2 in.
£ 1,000-1,500
HK\$ 10,500-15,700 US\$ 1,350-2,000

清十八世紀 青花礬紅小杯

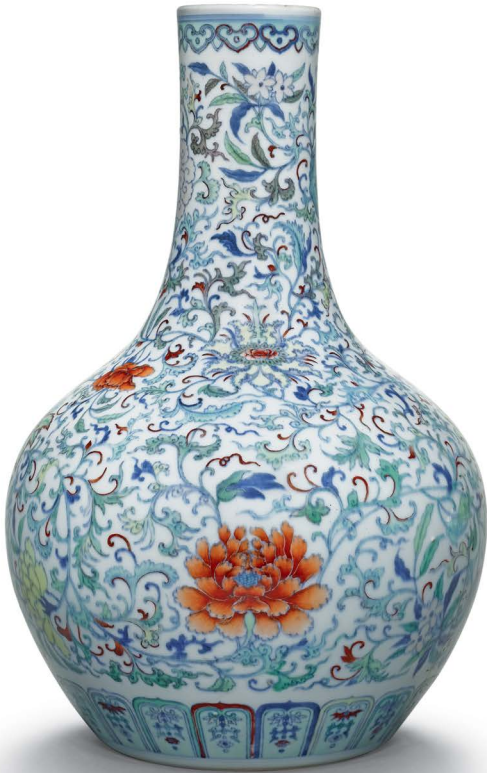
418

**A DOUCAI 'FLORAL SCROLL' BOTTLE VASE
QING DYNASTY, 18TH/19TH CENTURY**

the globular body rising from a recessed base to a tall cylindrical neck, painted and enameled around the exterior with a leafy composite floral scroll, all between lotus lappet and *ruyi* bands
33 cm, 13 in.

£ 5,000-7,000
HK\$ 52,500-73,000 US\$ 6,700-9,300

清十八十九世紀 闐彩花卉紋長頸瓶



418

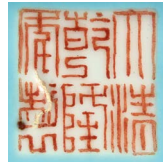
419

**A FAMILLE-ROSE 'IMMORTALS' VASE
QIANLONG SEAL MARK AND PERIOD**

the rectangular section baluster body rising from a spreading foot to a tall waisted neck with everted rim, finely enameled to the front and back with a large shaped panel enclosing immortals in a garden, the sides and neck with landscape panels and all reserved on a green dot ground with leafy sprays, the base inscribed with the seal mark in iron-red
47 cm, 18½ in.

£ 3,000-5,000
HK\$ 31,300-52,500 US\$ 4,000-6,700

清乾隆 粉彩群仙拱壽圖方瓶
《大清乾隆年製》款



mark



419



420

420

**A RARE GREEN AND BLACK 'NARCISSUS' DISH
YONGZHENG MARK AND PERIOD**

the gently rounded sides rising from a short tapering foot to an everted rim, finely enamelled in the reverse to the interior in green with a medallion enclosing narcissus plants growing beside pierced ornamental rocks, *lingzhi* and branches bearing nandina berries, all reserved on a black ground, the exterior with the *bajixiang* born on a leafy scroll
20.8 cm, 8¼ in.

£ 1,000-2,000
HK\$ 10,500-20,900 US\$ 1,350-2,700

清雍正 黑地綠彩水仙花紋盤
《大清雍正年製》款



mark

421

**A SANCAI-GLAZED BISCUIT TOAD-FORM
WATERPOT
QING DYNASTY, KANGXI PERIOD**

modelled as a recumbent toad with a sprig issuing lotus pod, flower and leaf in its mouth, covered overall with aubergine, yellow and green glazes
12.3 cm, 4⅞ in.

£ 600-800
HK\$ 6,300-8,400 US\$ 800-1,100

清康熙 素三彩蟾蜍形水盂



421

422

**A GILT-DECORATED BLACK-GROUND
BRUSHPOT
QING DYNASTY**

the slightly waisted cylindrical body rising from a flat base with a central countersunk roundel, decorated around the body with traces of a panel enclosing a boat within a river landscape
18.3 cm, 7¼ in.

PROVENANCE

Drouot, Paris, 28th April 1978.

£ 1,200-1,800
HK\$ 12,500-18,800 US\$ 1,600-2,400

清 烏金釉筆筒

來源

Drouot, 巴黎, 1978年4月28日



422

A FAMILLE-ROSE 'IMMORTALS' WARMING BOWL AND COVER
DAOGUANG MARK AND PERIOD

the straight sides rising from a tapering foot to a waisted neck, flanked by four animal-mask handles on the side, the exterior vibrantly painted and gilded with immortals in a courtyard situated in a mountainous waterscape, all between a band of floral motifs to the shoulder and foot, the cover decorated with foreign figures carrying various gifts in a mountainscape, surmounted by a gilded animal-shape finial, the interior with a separate bowl, the base with a four-character seal mark in iron-red (3)

16.5 cm, 6½ in.

£ 600-800
 HK\$ 6,300-8,400 US\$ 800-1,100

清道光 粉彩八仙圖溫盃
 《道光年製》款



mark



424



423

424

A YELLOW-GROUND FAMILLE ROSE PART TEA SET
GUANGXU MARKS AND PERIOD

each piece brightly enamelled and gilt with four medallions enclosing the characters *wan shou wu jiang* divided by ribbon-tied *wan* symbols amidst cloud swirls and above foaming waves, all reserved on a rich yellow ground, comprising: six cups, covers and stands; a cup and stand; a soup bowl and cover; two teacups and saucers; five small dishes; six bowls; five plates (42)

The largest 19.8 cm, 7¾ in.

£ 8,000-12,000
 HK\$ 83,500-125,000 US\$ 10,700-16,000

清光緒
 黃地粉彩萬壽無疆紋器皿一組
 《大清光緒年製》款



mark

425

AN IRON-RED 'PHOENIX' JAR
QING DYNASTY, 18TH CENTURY

the deep rounded sides rising from a recessed base to a short straight rim, brightly painted in reverse and gilt around the exterior with three phoenix amidst leafy scrolling peony branches, all reserved on a red ground, the neck with a diaper band between gilt lines 38 cm, 15 in.

£ 1,000-2,000
 HK\$ 10,500-20,900 US\$ 1,350-2,700

清十八世紀 礬紅夔鳳紋缸



425



426

426

**A STUDY COLLECTION OF ROBINS-EGG
GLAZED MINIATURE VASES
QING DYNASTY, 18TH/19TH CENTURY**

comprising of a miniature pear-shaped vase with a straight neck, a larger one with a flared mouth, and a miniature *meiping*, all covered with an attractive mottled turquoise-blue glaze

(3)

largest 12.2 cm, 4¾ in.

£ 800-1,200

HK\$ 8,400-12,500 US\$ 1,100-1,600

清十八/十九世紀 爐鈎釉小瓶一組三件

427

**A FAMILLE-ROSE 'HEHE ERXIAN' GROUP
QING DYNASTY**

the twins standing with wide smiles on their faces, both figures adorned in brightly-enamelled long flowing robes, one of them holding a brocade ball in both hands while the other wraps his arm around his twin's shoulder in a friendly embrace

24.1 cm, 9½ in.

£ 800-1,200

HK\$ 8,400-12,500 US\$ 1,100-1,600

清 粉彩和合二仙立像



427



428

428

**A TURQUOISE-GLAZED FIGURE OF A TAPIR
QING DYNASTY, QIANLONG PERIOD**

modelled as a recumbent tapir, the head brilliantly rendered with alert eyes below a pair of upright ears, covered overall with a lustrous turquoise glaze

21.3 cm, 8¾ in.

£ 600-800

HK\$ 6,300-8,400 US\$ 800-1,100

清乾隆 孔雀藍釉臥獬

**A RED OVERLAY YELLOW GROUND BOTTLE
VASE**

QING DYNASTY

the compressed globular body rising from a short foot to a tall straight neck, carved in relief through a layer of bright red glass to the opaque yellow ground with a peach tree and flowers issuing from rockwork

15.1 cm, 5 $\frac{7}{8}$ in.

£ 1,000-2,000

HK\$ 10,500-20,900 US\$ 1,350-2,700

清 黃地套紅料壽桃紋瓶



429



430

430

**A LARGE EMBROIDERED YELLOW 'DRAGON'
BANNER**

**QING DYNASTY, XIANFENG PERIOD, DATED
1851**

of triangular shape, finely embroidered in shades of blue and cream silk threads with a large scaly five-clawed dragon in pursuit of a flaming pearl amidst ruyi-head cloud scrolls and bats, the reverse with a ten-character inscription *Xiao zhangcun Guandi Miao, Xianfeng yuan nian* (which may be translated as 'Temple of Guandi, first year of Xianfeng')

W £ 5,000-7,000

HK\$ 52,500-73,000 US\$ 6,700-9,300

清咸豐元年（1851）黃地刺綉穿雲游龍紋旗

《小張村關帝廟咸豐元年》款

431

A 'DREAM STONE' HONGMU TABLE SCREEN

the rectangular marble panel with natural and enhanced grey and black inclusions depicting figures in a landscape, mounted in a carved and pierced wood frame and supported on a wood stand

(2)

68 cm, 26 $\frac{3}{4}$ in.

PROVENANCE

Christie's London, 20th September 2011, lot 30.

© £ 1,000-2,000

HK\$ 10,500-20,900 US\$ 1,350-2,700

紅木嵌石插屏

來源

倫敦佳士得2011年9月20日，編號30



431

432 no lot



433

433

A CARVED CINNABAR LACQUER BOX AND COVER

QING DYNASTY, 18TH CENTURY

the hexagonally lobed cover finely and deeply carved with three scholars seated at a table within a rocky landscape, the straight sides carved with a foliate diaper, the straight-sided box similarly carved with diaper, the interior and base lacquered black

(2)
17 cm, 6⁵/₁₆ in.

£ 6,000-8,000
HK\$ 62,500-83,500 US\$ 8,000-10,700

清十八世紀 剔紅高士圖蓋盒

434

A SMALL CARVED CINNABAR LACQUER BOX AND COVER

QING DYNASTY, 19TH CENTURY

of circular section, carved to the cover with a figure in a pavilion beneath a prominent pine tree amidst a landscape scene, the box rendered with two boys amidst a garden scene, the interiors lacquered black

(2)
7 cm, 2³/₄ in.

£ 800-1,200
HK\$ 8,400-12,500 US\$ 1,100-1,600

清十九世紀 剔紅人物庭院圖印盒



434

435 no lot

A CARVED CINNABAR LACQUER
WALL VASE
QING DYNASTY, 18TH/19TH
CENTURY

modelled as a vase with a globular body rising to a tall flaring neck and short mouth and supported on a wood stand, carved to the body with a central *shou* roundel amidst stylised *chi* dragons, all between a band of cicada and keyfret motifs, the neck with a band of spiral cloud roundels alternating with *ruyi* clouds below a further register of stylised *chilong* dragons, the mouth with a keyfret border
26.4 cm, 10³/₈ in.

£ 8,000-12,000

HK\$ 83,500-125,000 US\$ 10,700-16,000

清十八/十九世紀 剔紅福壽螭
龍紋壁瓶



437

A LARGE GOLD-SPLASHED BRONZE VASE

QING DYNASTY, 18TH CENTURY

the baluster body rising from a spreading foot to a tall flaring neck set with a pair of high relief *chilong* handles, with raised bosses and bowstrings at the neck, irregularly splashed in gold around the exterior, the base with an apocryphal six-character Xuande mark 32 cm, 12½ in.

PROVENANCE

Sotheby's New York, 18th March 2014, lot 368.

£ 6,000-8,000

HK\$ 62,500-83,500 US\$ 8,000-10,700

清十八世紀 銅灑金螭龍耳瓶
《大明宣德年製》仿款

來源

紐約蘇富比2014年3月18日，編號368



437

438

A LARGE AND IMPRESSIVE BRONZE BUDDHIST LION CENSER AND COVER

17TH CENTURY

seated with bushy tail erect and the right paw resting on a ribbon-tied ball, the face with large bulging eyes and jaws open baring the rows of sharp teeth, the back with detachable cover, the metal patinated to a dark chocolate tone, wood stand

(3)

37 cm, 14½ in.

PROVENANCE

Christie's London, 6th November 2009, lot 362.

© £ 8,000-12,000

HK\$ 83,500-125,000 US\$ 10,700-16,000

十七世紀 銅獅蓋爐

來源

倫敦佳士得2009年11月6日，編號362



438

439

A BRONZE 'SHOULAO' CENSER

QING DYNASTY, 19TH CENTURY

cast in two parts, in the form of a joyful Shoulao riding his buffalo, the God of Longevity with his characteristically exaggerated forehead and long beard wearing a loose robe, seated on his animal companion holding a scroll in his left hand, a slit opening to his sleeve and his mouth act as smoke holes

(2)

23.5 cm, 9¼ in.

£ 1,000-2,000

HK\$ 10,500-20,900 US\$ 1,350-2,700

清十九世紀 壽老騎牛銅爐



439

440

**A CAST-IRON HEAD OF A LUOHAN
MING DYNASTY**

the face rendered with lidded eyes above a pointy nose and a prominent chin, all beneath a lined protruding forehead, the mouth with a broad smile, the bronze patinated to an even dark reddish-brown tone, wood stand

(2)

34.8 cm, 13²/₈ in.

£ 3,000-5,000

HK\$ 31,300-52,500 US\$ 4,000-6,700

明 鑄鐵羅漢像



440

441

**A SCHOLAR'S ROCK
QING DYNASTY**

of vertical orientation, expanding towards the top, the smooth cream-coloured stone with numerous grooves and round perforations, wood stand

(2)

68.7 cm, 27 in.

© £ 4,000-6,000

HK\$ 41,700-62,500 US\$ 5,400-8,000

清 賞石



441

442

**A POLYCHROME STUCCO HEAD OF
BUDDHA**

MING DYNASTY, 16TH CENTURY

the oval-shaped face with arched eyebrows and downcast eyes casting a serene aura, framed by long-lobed ears and an *ushnisha* covered in spirals, mounted on a bronze stand

34.5 cm, 13⁵/₈ in.

£ 3,000-5,000

HK\$ 31,300-52,500 US\$ 4,000-6,700

明十六世紀 彩塑佛首



442



443



444



445

443

A CARNELIAN AGATE 'TREE TRUNK' VASE

QING DYNASTY, 18TH CENTURY

naturalistically rendered as a curved hollowed tree trunk forming the vase, the milky-white portion of the stone fashioned into *lingzhi* sprigs, the vermillion-red part carved with fruiting peach trees, wood stand (3)

13 cm, 5 $\frac{1}{8}$ in.

£ 3,000-5,000

HK\$ 31,300-52,500 US\$ 4,000-6,700

清十八世紀 南紅瑪瑙仙芝祝壽紋花插

444

A PAIR OF CLOISSONNÉ ENAMEL CRANES

QING DYNASTY, 19TH CENTURY

each standing on long tubular legs with their heads turned to the left and right, brightly enameled with white and grey feathers, their wings and tail feathers detailed with blue and turquoise, wood stands (2)

40.3 cm, 15 $\frac{7}{8}$ in.

◎ £ 2,000-3,000

HK\$ 20,900-31,300 US\$ 2,700-4,000

清十九世紀 掐絲琺瑯仙鶴一對

445

A LAC-BURGAUTE 'MANDARIN DUCK' BOX AND COVER

QING DYNASTY, 18TH/19TH CENTURY

depicted recumbent with legs tucked underneath its plump body, the interior lacquered red, the base lacquered black (2)

8.6 cm, 3 $\frac{3}{8}$ in.

£ 1,000-2,000

HK\$ 10,500-20,900 US\$ 1,350-2,700

清十八/十九世紀 螺鈿寶鴨形蓋盒



446



447



448

446

**A PAIR OF CLOISSONNÉ ENAMEL
ELEPHANT AND BOYS
QING DYNASTY, 19TH CENTURY**

each standing four-square, the head turned to one side with a long curled trunk flanked by tusks, the body caparisoned with a saddle draped with a cloth decorated with auspicious motifs including a flying crane amidst clouds and crashing waves on each side, surmounted by a boy wearing a coat decorated with auspicious emblems amongst clouds and a tiger-skin headdress

(8)

26.2 cm, 10¼ in.

£ 3,000-5,000

HK\$ 31,300-52,500 US\$ 4,000-6,700

清十九世紀 掐絲琺瑯童子瑞象一對

447

**A SMALL PINK TOURMALINE FIGURE
OF A LION
QING DYNASTY**

depicted recumbent with legs neatly tucked beneath its body and the head turned over its back, the stone of a translucent pale-pink tone

5.3 cm, 2⅜ in.

£ 600-800

HK\$ 6,300-8,400 US\$ 800-1,100

清 碧璽瑞獅把件

448

**A CARVED BAMBOO 'PINE TREE'
LIBATION CUP
QING DYNASTY, 19TH CENTURY**

the deep flaring sides carved in high relief and openwork in the form of a trunk section of a gnarled pine tree, the bark detailed with knots, wrapped around the sides with branches laden with clusters of needles, the interior lined with silver-coloured metal

14.3 cm, 5⅝ in.

£ 3,000-5,000

HK\$ 31,300-52,500 US\$ 4,000-6,700

清十九世紀 竹雕松樹紋樽式盃



449

449

A PALE CELADON AND RUSSET JADE 'RAM-HEAD' WASHER

the deep lobed and curved sides rising from a floret foot, set to one end with a ram-head handle, the stone of a pale celadon tone with some russet and caramel inclusions
15.6 cm, 6¼ in.

PROVENANCE

Christie's London, 6th November 2012, lot 154.

£ 6,000-8,000

HK\$ 62,500-83,500 US\$ 8,000-10,700

青白玉羊首瓜棱式洗

來源

倫敦佳士得2012年11月6日，編號154

450

**A CELADON JADE 'DOUBLE-PEACH' GROUP
QING DYNASTY, 18TH CENTURY**

naturalistically carved as two peaches born on leafy curling stems, surmounted by a high relief bat in flight, the stone of a very pale celadon-white tone, wood stand
7.5 cm, 3 in.

£ 1,500-2,500

HK\$ 15,700-26,100 US\$ 2,000-3,350

清十八世紀 青玉雙桃擺件



450

451

**A PALE CELADON JADE WASHER
LATE MING DYNASTY**

carved in the form of a blossom with unfurling petals borne on curled stems issuing leaves and attendant flowers, the polished stone of a pale-celadon tone with russet streaks
14.7 cm, 5¾ in.

£ 2,000-3,000

HK\$ 20,900-31,300 US\$ 2,700-4,000

晚明 青白玉花式洗



451

**A LARGE INSCRIBED CELADON JADE
MOUNTAIN**

QING DYNASTY, 18TH/19TH CENTURY

carved to the front face with a mountain path winding past pagodas and steep rock faces, the upper-most rock with a three-line calligraphic inscription, the reverse with cranes standing and in flight amidst bamboo and fir trees, similarly carved to the upper rocks with a five-line calligraphic inscription, the well-polished stone of a pale green tone with some lighter and russet inclusions, wood stand (2)

31 cm, 12¼ in.

PROVENANCE

Christie's London, 12th May 2009, lot 82.

£ 8,000-12,000

HK\$ 83,500-125,000 US\$ 10,700-16,000

清十八/十九世紀 青玉仙山樓閣山子

來源

倫敦佳士得2009年5月12日，編號82

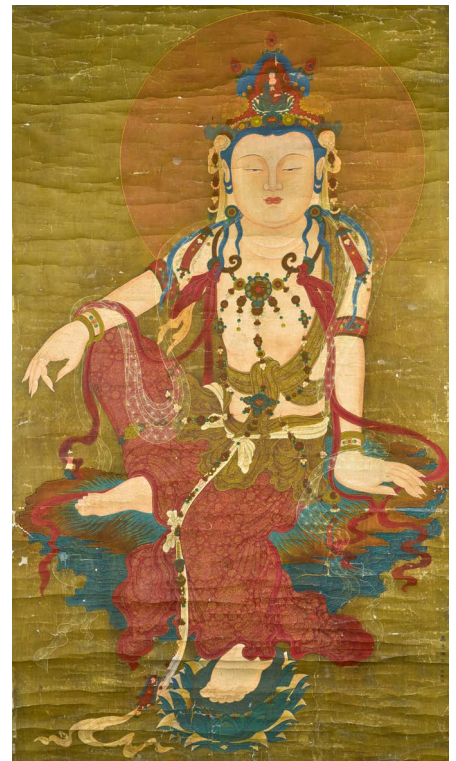




453 part lot



454



455

453

**CHINESE SCHOOL
LATE MING DYNASTY**

a pair, ink and colour on paper, one depicting Buddha seated on a lotus pedestal base, the other depicting Guanyin similarly seated, framed and Perspex
145 by 72 cm, 57 by 28³/₈ in.

W £ 5,000-7,000
HK\$ 52,500-73,000 US\$ 6,700-9,300

晚明 《佛》《觀音》設色紙本 一組兩幅

454

**CHINESE SCHOOL
QING DYNASTY**

ink and colour on silk, depicting Buddha, mounted as a hanging scroll
180 by 83 cm, 70 ³/₄ by 32³/₄ in.

PROVENANCE

Lempertz, Germany, 9th June 2011.

W £ 3,000-5,000
HK\$ 31,300-52,500 US\$ 4,000-6,700

清 《佛》設色絹本 立軸

來源
Lempertz, 德國, 2011年6月9日

455

**CHINESE SCHOOL, SEATED
BODHISATTVA
QING DYNASTY**

ink and colour on silk, depicted seated in *lalitasana* with the left foot resting on a lotus, the torso covered with elaborate jewels and the shoulders draped with a delicate scarf, mounted as a scroll
186 by 108 cm, 73 by 42¹/₂ in.

PROVENANCE

Christie's London, 14th May 2013, lot 165.

W £ 2,000-3,000
HK\$ 20,900-31,300 US\$ 2,700-4,000

清 《水月觀音》設色絹本 立軸

來源
倫敦佳士得2013年5月14日, 編號165



456



457



458

456

CHINESE SCHOOL
QING DYNASTY, 18TH/19TH
CENTURY

ink and colour on silk, depicting Daoist figures,
mounted as a hanging scroll
161 by 87 cm, 63¼ by 34¼ in.

W £ 5,000-7,000
HK\$ 52,500-73,000 US\$ 6,700-9,300

清十八/十九世紀
《道教神仙》設色絹本 立軸

457

CHINESE SCHOOL
QING DYNASTY, 18TH/19TH
CENTURY

ink and colour on silk, depicting the 'Judgement
of the Souls', framed and Perspex
137 by 69.5 cm, 53⅞ by 27⅞ in.

W £ 3,000-5,000
HK\$ 31,300-52,500 US\$ 4,000-6,700

清十八/十九世紀
《輪迴審判》設色絹本

458

CHINESE SCHOOL
QING DYNASTY, 18TH CENTURY

ink and colour on silk, depicting the 'Nine
Luohan', framed and Perspex
137 by 69 cm, 54 by 27⅞ in.

W £ 5,000-7,000
HK\$ 52,500-73,000 US\$ 6,700-9,300

清十八世紀 《羅漢圖》設色
絹本



459

459

**CHINESE SCHOOL
QING DYNASTY, 19TH CENTURY**

ink and colour on silk, depicting a court scene, framed and Perspex
139 by 67 cm, 54¾ by 26¾ in.

W £ 2,000-3,000
HK\$ 20,900-31,300 US\$ 2,700-4,000

清十九世紀 《庭院人物圖》設色絹本

460

**CHINESE SCHOOL
QING DYNASTY, 18TH/19TH CENTURY**

ink and colour on paper, depicting Daoist Immortals, framed and Perspex
102 by 163.5 cm, 40¼ by 64¾ in.

W £ 800-1,200
HK\$ 8,400-12,500 US\$ 1,100-1,600

清十八十九世紀 《西王母祝壽圖》設色絹本



460



461

461

**CHINESE SCHOOL
QING DYNASTY, 19TH CENTURY**

ink and colour on silk, depicting the Immortals in Paradise, framed and Perspex
211 by 120 cm, 83 by 47¼ in.

W £ 3,000-5,000
HK\$ 31,300-52,500 US\$ 4,000-6,700

清十九世紀 《道教仙境圖》設色絹本

462

CHINESE SCHOOL
19TH/20TH CENTURY

ink and colour on silk, depicting figures around a table,
mounted as a scroll
120 by 60 cm, 47 by 23½ in.

£ 1,500-2,500
HK\$ 15,700-26,100 US\$ 2,000-3,350

十九/二十世紀 《庭院人物圖》 設色絹本



463

464

CHINESE SCHOOL
QING DYNASTY, 19TH CENTURY

ink and colour on silk, depicting an Emperor and his
numerous sons, later added inscription, framed and Perspex
206 by 125 cm, 81½ by 49¼ in.

W £ 2,000-3,000
HK\$ 20,900-31,300 US\$ 2,700-4,000

清十九世紀 《嬰戲圖》 設色絹本



462

463

CHINESE SCHOOL
QING DYNASTY, 19TH CENTURY

ink and colour on silk, depicting four beautiful maidens
conversing, framed and glazed
33 by 33 cm, 13 by 13 in.

£ 300-500
HK\$ 3,150-5,300 US\$ 400-700

清十九世紀 《仕女圖》 設色絹本



464



465

466

CHEN JIALING (1937)
SUMMER PEACE

ink and colour on paper, framed and Perspex
64 by 45 cm, 25¼ by 17¾ in.

£ 800-1,200
HK\$ 8,400-12,500 US\$ 1,100-1,600

《盛夏》設色紙本 陳家冷（1937）



467

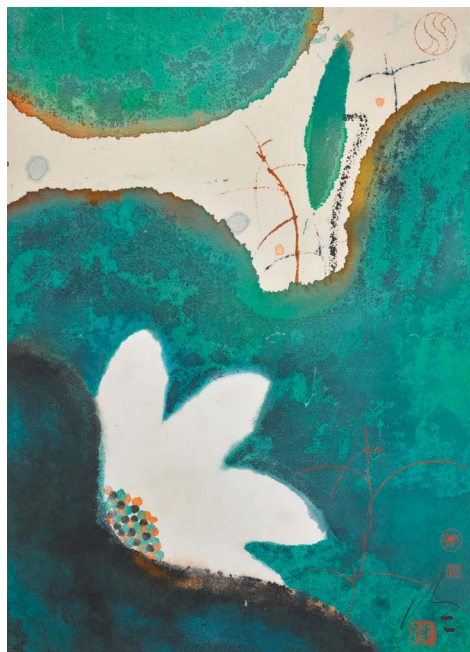
465

CHEN JIALING (1937)
LANDSCAPE

ink and colour on paper, framed and Perspex
64 by 45 cm, 25¼ by 17¾ in.

£ 800-1,200
HK\$ 8,400-12,500 US\$ 1,100-1,600

《山水》設色紙本 陳家冷（1937）



466

467

CHEN JIALING (1937)
BLOOM

ink and colour on paper, framed and Perspex
64 by 45 cm, 25¼ by 17¾ in.

£ 800-1,200
HK\$ 8,400-12,500 US\$ 1,100-1,600

《荷花》設色紙本 陳家冷（1937）

**A COLLECTION OF BISCUIT PORCELAIN BUSTS
OF CHAIRMAN MAO ZEDONG**

1966-1967

each inscribed 'Long Live Chairman Mao'
(25)
18 cm, 7 in.

PROVENANCE

Peter Wain.

EXHIBITED

Others from the same hoard: *Mao: Art For The Masses, Revolutionary Art of the Mao Zedong Era, 1950-1976*, National Museum of Scotland, Edinburgh, May 3003 - March 2004, cat. no. 32.

W £ 1,000-2,000

HK\$ 10,500-20,900 US\$ 1,350-2,700

1966至1967年 毛澤東瓷像一組二十五件

展覽

《Mao: Art For The Masses, Revolutionary Art of the Mao Zedong Era, 1950-1976》, 蘇格蘭國家博物館, 愛丁堡, 2003至2004年, 編號32

The busts are part of a hoard of 400 such figurines discovered on the Sino-Tibetan border. The busts were intended for official distribution to the outlying villages of the South East corner of the Tibetan Autonomous Region. They were shipped via Kunming to Lijiang, repacked into packhorse baskets, then transported by horse to Zhong Dian on the Yunnan/Tibet border. The baskets were placed in a store-room in the police station, forgotten about and rediscovered after the 1998 earthquake destroyed the building.

This porcelain 'Official Issue' bust was the only sculptured image to be distributed to all official buildings throughout China.





469

469

A KUTANI DISH

EDO PERIOD, LATE 17TH CENTURY

decorated in typical palette with a *ho-o* bird roundel bordered by *karakusa*
17cm., 6 $\frac{3}{8}$ in.

£ 1,000-1,500

HK\$ 10,500-15,700 US\$ 1,350-2,000

470

TWO SATSUMA EWERS AND A CUP AND SAUCER

MEIJI PERIOD, LATE 19TH CENTURY

decorated in various coloured enamels and gilt with various landscape scenes
the tallest: 18 cm, 7 $\frac{1}{8}$ in.

£ 1,500-2,000

HK\$ 15,700-20,900 US\$ 2,000-2,700



470 part lot



471

471

A TEBAKO [ACCESSORY BOX]

RYUKYU ISLANDS, 18TH - 19TH CENTURY

two tiers with cover decorated in gold lacquer on a black ground with squirrels among wine
9.5 by 12 cm, 3 $\frac{1}{2}$ by 4 $\frac{3}{4}$ in.

£ 800-1,000

HK\$ 8,400-10,500 US\$ 1,100-1,350

472 no lot

473

AN ARITA VASE

EDO PERIOD, LATE 17TH CENTURY

decorated in underglaze blue with a dragon
28cm., 11 in.

‡ £ 2,000-3,000

HK\$ 20,900-31,300 US\$ 2,700-4,000



473

474

AN ARITA VASE

EDO PERIOD, LATE 17TH CENTURY

oviform with domed cover decorated in underglaze blue with
ho-o birds
58 cm., 22 $\frac{7}{8}$ in.

‡ £ 3,000-4,000

HK\$ 31,300-41,700 US\$ 4,000-5,400



474

475

A BRONZE INLAID FIGURE OF A SAMURAI

MEIJI PERIOD, LATE 19TH CENTURY

the standing figure inlaid in gilt *hirazogan* on a wood base decorated in gold *hiramaki-e*, signed *Miyao*
20 cm., 7 $\frac{7}{8}$ in.

£ 5,000-8,000

HK\$ 52,500-83,500 US\$ 6,700-10,700

476

A BRONZE INLAID FIGURE OF A MAN WITH UMBRELLA

MEIJI PERIOD, LATE 19TH CENTURY

the standing figure inlaid in gilt *hirazogan* on a wood base decorated in gold *hiramaki-e*, signed *Miyao*
21 cm., 8 $\frac{1}{4}$ in.

£ 3,000-4,000

HK\$ 31,300-41,700 US\$ 4,000-5,400



475



476

477

THE PROPERTY OF A GENTLEMAN

A CLOISONNE VASE

MEIJI PERIOD, LATE 19TH CENTURY

WITH HAYASHI MARK

the vase with short neck and silver rims,
decorated in various coloured cloisonne
enamels and thicknesses of gold and silver wire
with birds among flowers and foliage
31 cm, 12½ in.

£ 5,000-7,000

HK\$ 52,500-73,000 US\$ 6,700-9,300



477

478

THE PROPERTY OF A LADY

A LARGE IMARI CHARGER

EDO PERIOD, LATE 17TH CENTURY

the imari dish decorated with a central roundel
in iron-red enamel and gilt, bordered by a floral
design

53 cm, 20 7/8 in.

± £ 2,000-3,000

HK\$ 20,900-31,300 US\$ 2,700-4,000



478

END OF SALE

An extremely rare 'Jun' foliate-rim vase
Northern Song/Jin Dynasty
Estimate £500,000–700,000*



Important Chinese Art

AUCTION LONDON 15 MAY

EXHIBITION FREE AND OPEN TO THE PUBLIC 11 – 14 MAY

34–35 NEW BOND STREET, LONDON W1A 2AA
ENQUIRIES +44 (0)20 7293 6442 CHINESE.LONDON@SOTHEBYS.COM
SOTHEBYS.COM/IMPORTANTCHINESEART #SOTHEBYSASIANART

*Buyers are liable to pay both the hammer price (as estimated above) and the buyer's premium together with any applicable taxes and Artist's Resale Right (which will depend on the individual circumstances). Refer to the Buying at Auction and VAT sections at the back of the catalogue for the relevant sale for further information.



DOWNLOAD SOTHEBY'S APP
FOLLOW US @SOTHEBYS

ANONYMOUS
Stable with fine horses
Edo period (late 17th century)
A pair of six-fold screens
Estimate £80,000–100,000*



Fine Japanese Art

AUCTION LONDON 14 MAY

34–35 NEW BOND STREET, LONDON W1A 2AA
ENQUIRIES +44 (0)20 7293 6537 MARK.HINTON@SOTHEBYS.COM
SOTHEBYS.COM/JAPANESEART #SOTHEBYSASIANART

*Buyers are liable to pay both the hammer price (as estimated above) and the buyer's premium together with any applicable taxes and Artist's Resale Right (which will depend on the individual circumstances). Refer to the Buying at Auction and VAT sections at the back of the catalogue for the relevant sale for further information.



DOWNLOAD SOTHEBY'S APP
FOLLOW US @SOTHEBYS

Sotheby's EST. 1744

Know Your Worth.

Sotheby's Valuations Services provide bespoke valuations across all collecting categories that are recognised around the world by financial institutions, insurance brokers and government agencies.

34-35 NEW BOND STREET, LONDON W1A 2AA
ENQUIRIES +44 (0)20 7293 6422 VALUATIONS@SOTHEBYS.COM
SOTHEBYS.COM/VALUATIONS #SOTHEBYSVALUATIONS

© DOUGLAS MACKIE © SIMON UPTON © THE ESTATE OF ADRIAN HEATH



DOWNLOAD SOTHEBY'S APP
FOLLOW US @SOTHEBYS



Absentee/Telephone Bidding Form

Sale Number L19216 | **Sale Title** ST GEORGE STREET SALE: ASIAN ART | **Sale Date** 17 MAY 2019

Please see the important information regarding absentee bidding on the reverse of this form. Forms should be completed in ink and emailed, mailed or faxed to the Bid Department at the details below.

SOTHEBY'S ACCOUNT NUMBER (IF KNOWN)

TITLE FIRST NAME LAST NAME

COMPANY NAME

ADDRESS

POSTAL CODE COUNTRY

DAYTIME PHONE MOBILE PHONE FAX

EMAIL

Please indicate how you would like to receive your invoices: Email Post/Mail

Telephone number during the sale (telephone bids only)

Please write clearly and place your bids as early as possible, as in the event of identical bids, the earliest bid received will take precedence. Bids should be submitted in pounds sterling and all bid requests should be submitted at least 24 hrs before the auction. Telephone bids are offered for lots with a minimum low estimate of £3,000.

LOT NUMBER	LOT DESCRIPTION	MAXIMUM STERLING PRICE OR ✓ FOR PHONE BID (EXCLUDING PREMIUM AND TAX)
		£
		£
		£
		£
		£
		£
		£
		£
		£
		£

We will send you a shipping quotation for this and future purchases unless you select one of the check boxes below. Please provide the name and address for shipment of your purchases, if different from above.

NAME AND ADDRESS

POSTAL CODE COUNTRY

- I will collect in person I authorise you to release my purchased property to my agent/shipper (provide name)
- Send me a shipping quotation for purchases in this sale only

I agree to be bound by Sotheby's "Conditions of Business" and the information set out overleaf in the Guide for Absentee and Telephone Bidders, which is published in the catalogue for the sale. Sotheby's Group companies may use your details to contact you about Sotheby's products or services, events or promotions and other activities that may be of interest to you. If you would prefer not to be contacted in this way, please tick the box below.

- I do not wish to receive promotional communications from Sotheby's

SIGNATURE

PRINT NAME DATE

Guide for Absentee and Telephone Bidders

If you are unable to attend an auction in person, you may give Sotheby's Bid Department instructions to bid on your behalf by completing the form overleaf. This service is confidential and available at no additional charge.

General

Before the Auction We will try and purchase the lot(s) of your choice for the lowest price possible (dependent on the reserve price and other bids) and never for more than the maximum bid amount you indicate. Where appropriate, your bids will be rounded down to the nearest amount consistent with the auctioneer's bidding increments.

Please place your bids as early as possible, as in the event of identical absentee bids the earliest received will take precedence. Bids should be submitted at least twenty-four hours before the auction.

If bidding by telephone, we suggest that you leave a maximum bid which we can execute on your behalf in the event we are unable to reach you.

Please refer to Condition 5 of the Conditions of Business printed in this catalogue.

After the Auction Successful bidders will receive an invoice detailing their purchases and giving instructions for payment and clearance of goods.

If you are bidding for items marked with a 'W' in the catalogue, we recommend you contact us on the afternoon of the sale to check whether you have been successful. These items will be sent to Sotheby's Greenford Park Fine Art Storage Facility immediately following the sale and therefore buyers are requested to arrange early collection of their goods as they will be subject to handling and storage charges after 30 days.

Without Reserve Lots Where a lot is offered "without reserve" absentee bids will be executed at a minimum of 10% of the low estimate.

Completing This Form

This form should be used for one sale only. Please indicate the sale number, sale title and sale date in the space provided at the top of the form if it is not already pre-populated.

Please record accurately the lot numbers, descriptions and the maximum hammer price you are willing to pay for each lot. Instructions to "BUY" or unlimited bids will not be accepted.

Bids must be numbered in the same order as the lots appear in the catalogue.

Alternate bids for items can be made by placing the word "OR" between lot numbers. This means if your bid on an early lot is successful, we will not continue to bid on subsequent lots for you. Or, if your early bids are unsuccessful, we will continue to execute bids for the remaining lots listed on your absentee bidding form.

If you are arranging a telephone bid, please clearly specify the telephone number on which you can be reached at the time of the sale, including the country code. We will call you from the saleroom shortly before the relevant lot is offered.

New Clients

If you have opened a new account with Sotheby's since 1 December 2002, and have not already provided appropriate identification, you will be asked to present documentation confirming your identity before your property or sale proceeds can be released to you. We may also contact you to request a bank reference.

Please provide government issued photographic identification such as a passport, identity card or driver's licence and confirm your permanent address.

Conditions of Absentee & Telephone Bidding

Please note that the execution of absentee and telephone bids is offered as an additional service for no extra charge. Such bids are executed at the bidder's risk and undertaken subject to Sotheby's other commitments at the time of the auction. Sotheby's therefore cannot accept liability for any reasonable error or failure to place such bids.

All bids are subject to the Conditions of Business applicable to the sale printed in the sale catalogue. Buyer's premium in the amount stated in paragraph 2 of Buying at Auction in the back of the sale catalogue will be added to the hammer price as part of the total purchase price, plus any applicable taxes and charges.

Bids will be executed for the lowest price as is permitted by other bids or reserves.

Where appropriate your written bids will be rounded down to the nearest amount consistent with the auctioneer's bidding increments.

Payment

In the event that you are successful, payment is due immediately after the sale unless otherwise agreed in advance. Payment may be made by bank transfer, debit and credit cards (up to £30,000 per sale, online or using Sotheby's Mobile App), cheque or cash (up to US\$10,000 equivalent). You will be sent full details on how to pay with your invoice.

Data Protection

Sotheby's will hold and process your personal information and may share it with another Sotheby's Group company for use as described in, and in line with, Sotheby's Privacy Policy published on Sotheby's website at www.sothebys.com or available on request by email to enquiries@sothebys.com.

BUYING AT AUCTION

The following pages are designed to give you useful information on how to buy at auction. Sotheby's staff as listed at the front of this catalogue will be happy to assist you. However, it is important that you read the following information carefully and note that Sotheby's act for the seller. Bidders' attention is specifically drawn to Conditions 3 and 4, which require them to investigate lots prior to bidding and which contain specific limitations and exclusions of the legal liability of Sotheby's and sellers. The limitations and exclusions relating to Sotheby's are consistent with its role as auctioneer of large quantities of goods of a wide variety and bidders should pay particular attention to these Conditions. Prospective bidders should also consult www.sothebys.com for the most up to date cataloguing of the property in this catalogue.

Buyer's Premium A buyer's premium will be added to the hammer price and is payable by the buyer as part of the total purchase price. The buyer's premium is 25% of the hammer price up to and including £300,000; 20% on any amount in excess of £300,000 up to and including £3,000,000; and 13.9% on any remaining amount in excess of £3,000,000. These rates are exclusive of any applicable VAT.

1. BEFORE THE AUCTION

Catalogue Subscriptions If you would like to take out a catalogue subscription, please ring +44 (0)20 7293 5000.

Pre-sale Estimates Pre-sale estimates are intended as a guide for prospective buyers. Any bid between the high and low pre-sale estimates would, in our opinion, offer a chance of success. However, lots can realise prices above or below the pre-sale estimates.

It is advisable to consult us nearer the time of sale as estimates can be subject to revision. The estimates printed in the auction catalogue do not include the buyer's premium or VAT.

Pre-sale Estimates in US Dollars and Euros Although the sale is conducted in pounds sterling, the pre-sale estimates in some catalogues are also printed in US dollars and/or euros. The rate of exchange is the rate at the time of production of this catalogue. Therefore, you should treat the estimates in US dollars or euros as a guide only.

Condition of Lots Prospective buyers are encouraged to inspect the property at the pre-sale exhibitions. Solely as a convenience, Sotheby's may also provide condition reports. The absence of reference to the condition of a lot in the catalogue description does not imply that the lot is free from faults or imperfections. Please refer to Condition 3 of the Conditions of Business for Buyers printed in this catalogue.

Electrical and Mechanical Goods All electrical and mechanical goods are sold on the basis of their artistic and decorative value only, and should not be assumed to be operative. It is essential that prior to

any intended use, the electrical system is checked and approved by a qualified electrician.

Provenance In certain circumstances, Sotheby's may print in the catalogue the history of ownership of a work of art if such information contributes to scholarship or is otherwise well known and assists in distinguishing the work of art. However, the identity of the seller or previous owners may not be disclosed for a variety of reasons. For example, such information may be excluded to accommodate a seller's request for confidentiality or because the identity of prior owners is unknown given the age of the work of art.

2. DURING THE AUCTION

Conditions of Business The auction is governed by the Conditions of Business and Authenticity Guarantee. These apply to all aspects of the relationship between Sotheby's and actual and prospective bidders and buyers. Anyone considering bidding in the auction should read them carefully. They may be amended by way of notices posted in the saleroom or by way of announcement made by the auctioneer.

Bidding at Auction Bids may be executed in person by paddle during the auction, in writing prior to the sale, by telephone or online.

Auction speeds vary, but average between 50 and 120 lots per hour. The bidding steps are generally in increments of approximately 10% of the previous bid.

Please refer to Conditions 5 and 6 of the Conditions of Business for Buyers printed in this catalogue.

Bidding in Person To bid in person, you will need to register for and collect a numbered paddle before the auction begins. Proof of identity will be required. If you have a Sotheby's Client Card, it will facilitate the registration process.

Should you be the successful buyer of a lot, please ensure that your paddle can be seen by the auctioneer and that it is your number that is called out. Should there be any doubts as to price or buyer, please draw the auctioneer's attention to it immediately.

All lots sold will be invoiced to the name and address in which the paddle has been registered and cannot be transferred to other names and addresses.

Please do not mislay your paddle; in the event of loss, inform the Sales Clerk immediately. At the end of the sale, please return your paddle to the registration desk.

Absentee, Telephone and Internet Bids If you cannot attend the auction, we will be happy to execute written bids on your behalf or you can bid on the telephone for lots with a minimum low estimate of £3,000 or you can bid online using BIDnow. A bidding form and more information can be found at the back of this catalogue.

Online Bidding If you cannot attend the auction, it may be possible to bid online via BIDnow, eBay, Invaluable or other Online Platforms for selected sales. This service

is free and confidential. For information about registering to bid via BIDnow, please refer to sothebys.com. For information about registering to bid on eBay, please see www.ebay.com/sothebys. For information about registering to bid on Invaluable, please see www.invaluable.com/invaluable/help.cfm. Bidders using any online platform are subject to the Additional Terms and Conditions for Live Online Bidding, which can be viewed at sothebys.com, as well as the Conditions of Business applicable to the sale.

Consecutive and Responsive Bidding

The auctioneer may open the bidding on any lot by placing a bid on behalf of the seller. The auctioneer may further bid on behalf of the seller, up to the amount of the reserve, by placing consecutive or responsive bids for a lot. Please refer to Condition 6 of the Conditions of Business for Buyers printed in this catalogue.

Interested Parties Announcement In situations where a person who is allowed to bid on a lot has a direct or indirect interest in such lot, such as the beneficiary or executor of an estate selling the lot, a joint owner of the lot, or a party providing or participating in a guarantee of the lot, Sotheby's will make an announcement in the saleroom that interested parties may bid on the lot. In certain instances, interested parties may have knowledge of the reserves.

Employee Bidding Sotheby's employees may bid only if the employee does not know the reserve and fully complies with Sotheby's internal rules governing employee bidding.

US Economic Sanctions The United States maintains economic and trade sanctions against targeted foreign countries, groups and organisations. There may be restrictions on the import into the United States of certain items originating in sanctioned countries, including Burma, Cuba, Iran, North Korea and Sudan. The purchaser's inability to import any item into the US or any other country as a result of these or other restrictions shall not justify cancellation or rescission of the sale or any delay in payment. Please check with the specialist department if you are uncertain as to whether a lot is subject to these import restrictions, or any other restrictions on importation or exportation.

3. AFTER THE AUCTION

Payment Payment is due immediately after the sale and may be made by Sterling Wire Transfer or Sterling Cheque. Payments by Sterling Cash and by Credit/Debit Cards are also accepted subject to certain restrictions and/or surcharges – please see below.

- It is against Sotheby's general policy to accept single or multiple related payments in the form of cash or cash equivalents in excess of the local currency equivalent of US\$10,000.
- It is Sotheby's policy to request any new clients or buyers preferring to make a cash payment to provide: proof of identity (by providing some form of government issued identification containing a photograph, such as a

passport, identity card or driver's licence) and confirmation of permanent address. Thank you for your co-operation.

Cheques should be made payable to Sotheby's. Although personal and company cheques drawn in pounds sterling on UK banks are accepted, you are advised that property will not be released until such cheques have cleared unless you have a pre-arranged Cheque Acceptance Facility. Forms to facilitate this are available from the Post Sale Services Department.

Bank transfers Our bank account details are shown on our invoices. Please include your name, Sotheby's account number and invoice number with your instructions to your bank. Please note that we reserve the right to decline payments received from anyone other than the buyer of record and that clearance of such payments will be required. Please contact our Post Sale Services Department if you have any questions concerning clearance.

Card payment Sotheby's accepts payment by Visa, MasterCard, American Express and CUP credit and debit cards. Card payments may not exceed £30,000 per sale. All cards are accepted in person at Sotheby's premises at the address noted in the catalogue. With the exception of CUP, card payments may also be made online at <http://www.sothebys.com/en/invoice-payment.html> or by calling Post Sale Services at +44 (0)20 7293 5220.

We reserve the right to seek identification of the source of funds received.

The Conditions of Business require buyers to pay immediately for their purchases. However, in limited circumstances and with the seller's agreement, Sotheby's may grant buyers it deems creditworthy the option of paying for their purchases on an extended payment term basis. Generally credit terms must be arranged prior to the sale. In advance of determining whether to grant the extended payment terms, Sotheby's may require credit references and proof of identity and residence.

Collection It is Sotheby's policy to request proof of identity on collection of a lot. Lots will be released to you or your authorised representative when full and cleared payment has been received by Sotheby's. If you are in doubt about the location of your purchases, please contact the Sale Administrator prior to arranging collection. Removal, storage and handling charges may be levied on uncollected lots. Please refer to Condition 7 of the Conditions of Business for Buyers printed in this catalogue.

Storage Storage and handling charges may apply. For information concerning post sale storage and charges, please see Sotheby's Greenford Park, Storage and Collection Information at the back of this catalogue. Please refer to Condition 7 of the Conditions of Business for Buyers printed in this catalogue.

All purchases remaining at our New Bond Street premises 90 days after the sale will be transferred to Sotheby's Greenford Park Fine Art Storage (see Sotheby's Greenford Park, Storage and Collection information). All such purchases

will be subject to further storage and handling charges from this point.

Loss or Damage Buyers are reminded that Sotheby's accepts liability for loss or damage to lots for a maximum period of thirty (30) days after the date of the auction. Please refer to Condition 7 of the Conditions of Business for Buyers printed in this catalogue.

Shipping Sotheby's offers a comprehensive shipping service. Except if otherwise indicated in this Buying At Auction Guide, our Shipping Department can advise buyers on exporting and shipping property, and arranging delivery.

For assistance please contact:
Post Sale Services (Mon-Fri 9am to 5pm)
Tel +44 (0)20 7293 5220
Fax +44 (0)20 7293 5910
Email: ukpostsaleservices@sothebys.com

We will send you a quotation for shipping your purchase(s). Transit risk insurance may also be included in your quotation. If the quotation is accepted, we will arrange the shipping for you and will despatch the property as soon as possible after receiving your written agreement to the terms of the quotation, financial release of the property and receipt of any export licence or certificates that may be required. Despatch will be arranged at the buyer's expense. Sotheby's may charge an administrative fee for arranging the despatch.

All shipments should be unpacked and checked on delivery and any discrepancies notified immediately to the party identified in your quotation and/or the accompanying documentation.

Export The export of any lot from the UK or import into any other country may be subject to one or more export or import licences being granted. It is the buyer's responsibility to obtain any relevant export or import licence. The denial of any licence required or delay in obtaining such licence cannot justify the cancellation of the sale or any delay in making payment of the total amount due.

Sotheby's, upon request and for an administrative fee, may apply for a licence to export your lot(s) outside the UK

- An **EU Licence** is necessary to export cultural goods subject to the EU Regulation on the export of cultural property (EEC No. 3911/92, Official Journal No. L395 of 31/12/92) from the European Community.
- A **UK Licence** is necessary to move cultural goods valued at or above the relevant UK Licence limits from the UK.

For export outside the European Community, an EU Licence will be required for most items over 50 years of age with a value of over £41,018. The following is a selection of categories of items for which other value limits apply and for which an EU Licence may be required. It is not exhaustive and there are other restrictions.

EU Licence Thresholds
Archaeological objects
EU LICENCE THRESHOLD: ZERO
Elements of artistic, historical or religious monuments

EU LICENCE THRESHOLD: ZERO
Manuscripts, documents and archives (excluding printed matter)
EU LICENCE THRESHOLD: ZERO
Architectural, scientific and engineering drawings produced by hand
EU LICENCE THRESHOLD: £12,305
Photographic positive or negative or any assemblage of such photographs
EU LICENCE THRESHOLD: £12,305
Textiles (excluding carpets and tapestries)
EU LICENCE THRESHOLD: £41,018
Paintings in oil or tempera
EU LICENCE THRESHOLD: £123,055
Watercolours, gouaches and pastels
EU LICENCE THRESHOLD: £24,611
Prints, Engravings, Drawings and Mosaics
EU LICENCE THRESHOLD: £12,305

There are separate thresholds for exporting within the European Community. A UK Licence will be required for most items over 50 years of age with a value of over £65,000. Some exceptions are listed below:-

UK Licence Thresholds
Photographic positive or negative or any assemblage of such photographs
UK LICENCE THRESHOLD: £10,000
Textiles (excluding carpets and tapestries)
UK LICENCE THRESHOLD: £12,000
British Historical Portraits
UK LICENCE THRESHOLD: £10,000

Sotheby's recommends that you retain all import and export papers, including licences, as in certain countries you may be required to produce them to governmental authorities.

Endangered Species Items made of or incorporating plant or animal material, such as coral, crocodile, ivory, whalebone, tortoiseshell, etc., irrespective of age or value, may require a licence or certificate prior to exportation and require additional licences or certificates upon importation to any country outside the EU. Please note that the ability to obtain an export licence or certificate does not ensure the ability to obtain an import licence or certificate in another country, and vice versa. For example, it is illegal to import African elephant ivory into the United States and there are other restrictions on the importation of ivory into the US under certain US regulations which are designed to protect wildlife conservation. Sotheby's suggests that buyers check with their own government regarding wildlife import requirements prior to placing a bid. It is the buyer's responsibility to obtain any export or import licences and/or certificates as well as any other required documentation (please refer to Condition 11 of the Conditions of Business for Buyers printed in this catalogue). Please note that Sotheby's is not able to assist buyers with the shipment of any lots containing ivory and/or other restricted materials into the US. A buyer's inability to export or import these lots cannot justify a delay in payment or a sale's cancellation.

EXPLANATION OF SYMBOLS

The following key explains the symbols you may see inside this catalogue.

◊ Guaranteed Property

The seller of lots with this symbol has

been guaranteed a minimum price from one auction or a series of auctions. This guarantee may be provided by Sotheby's or jointly by Sotheby's and a third party. Sotheby's and any third parties providing a guarantee jointly with Sotheby's benefit financially if a guaranteed lot is sold successfully and may incur a loss if the sale is not successful. If the Guaranteed Property symbol for a lot is not included in the printing of the auction catalogue, a pre-sale or pre-lot announcement will be made indicating that there is a guarantee on the lot. If every lot in a catalogue is guaranteed, the Important Notices in the sale catalogue will so state and this symbol will not be used for each lot.

▲ Property in which Sotheby's has an Ownership Interest

Lots with this symbol indicate that Sotheby's owns the lot in whole or in part or has an economic interest in the lot equivalent to an ownership interest.

➤ Irrevocable Bids

Lots with this symbol indicate that a party has provided Sotheby's with an irrevocable bid on the lot that will be executed during the sale at a value that ensures that the lot will sell. The irrevocable bidder, who may bid in excess of the irrevocable bid, may be compensated for providing the irrevocable bid by receiving a contingent fee, a fixed fee or both. If the irrevocable bidder is the successful bidder, any contingent fee, fixed fee or both (as applicable) for providing the irrevocable bid may be netted against the irrevocable bidder's obligation to pay the full purchase price for the lot and the purchase price reported for the lot shall be net of any such fees. From time to time, Sotheby's may enter into irrevocable bid agreements that cover multiple lots. In such instances, the compensation Sotheby's will pay the irrevocable bidder is allocated to the lots for which the irrevocable bidder is not the successful purchaser. Under such circumstances, the total compensation to the irrevocable bidder will not exceed the total buyer's premium and other amounts paid to Sotheby's in respect of any lots for which the irrevocable bidder is not the successful bidder. If the irrevocable bid is not secured until after the printing of the auction catalogue, Sotheby's will notify bidders that there is an irrevocable bid on the lot by one or more of the following means: a pre-sale or pre-lot announcement, by written notice at the auction or by including an irrevocable bid symbol in the e-catalogue for the sale prior to the auction. From time to time, Sotheby's or any affiliated company may provide the irrevocable bidder with financing related to the irrevocable bid. If the irrevocable bidder is advising anyone with respect to the lot, Sotheby's requires the irrevocable bidder to disclose his or her financial interest in the lot. If an agent is advising you or bidding on your behalf with respect to a lot identified as being subject to an irrevocable bid, you should request that the agent disclose whether or not he or she has a financial interest in the lot.

∟ Interested Parties

Lots with this symbol indicate that parties with a direct or indirect interest in the lot

may be bidding on the lot, including (i) the beneficiary of an estate selling the lot, or (ii) the joint owner of a lot. If the interested party is the successful bidder, they will be required to pay the full Buyer's Premium. In certain instances, interested parties may have knowledge of the reserve. In the event the interested party's possible participation in the sale is not known until after the printing of the auction catalogue, a pre-lot announcement will be made indicating that interested parties may be bidding on the lot.

◻ No Reserve

Unless indicated by a box (◻), all lots in this catalogue are offered subject to a reserve. A reserve is the confidential hammer price established between Sotheby's and the seller and below which a lot will not be sold. The reserve is generally set at a percentage of the low estimate and will not exceed the low estimate for the lot. If any lots in the catalogue are offered without a reserve, these lots are indicated by a box (◻). If all lots in the catalogue are offered without a reserve, a Special Notice will be included to this effect and the box symbol will not be used for each lot.

⊕ Property Subject to the Artist's Resale Right

Purchase of lots marked with this symbol (⊕) will be subject to payment of the Artist's Resale Right, at a percentage of the hammer price calculated as follows:

Portion of the hammer price (in €)

Royalty Rate

From 0 to 50,000	4%
From 50,000.01 to 200,000	3%
From 200,000.01 to 350,000	1%
From 350,000.01 to 500,000	0.5%
Exceeding 500,000	0.25%

The Artist's Resale Right payable will be the aggregate of the amounts payable under the above rate bands, subject to a maximum royalty payable of 12,500 euros for any single work each time it is sold. The maximum royalty payable of 12,500 euros applies to works sold for 2 million euros and above. Calculation of the artist's resale right will be based on the pound sterling / Euro reference exchange rate quoted on the date of the sale by the European Central Bank.

◉ Restricted Materials

Lots with this symbol have been identified at the time of cataloguing as containing organic material which may be subject to restrictions regarding import or export. The information is made available for the convenience of Buyers and the absence of the Symbol is not a warranty that there are no restrictions regarding import or export of the Lot; Bidders should refer to Condition 11 of the Conditions of Business for Buyers. Please also refer to the section on Endangered Species in the Buying at Auction Guide. As indicated in the Endangered Species section, Sotheby's is not able to assist buyers with the shipment of any lots with this symbol into the US.

A buyer's inability to export or import any lots with this symbol cannot justify a delay in payment or a sale's cancellation.

▮ Monumental

Lots with this symbol may, in our opinion,

require special handling or shipping services due to size or other physical considerations. Buyers are advised to inspect the lot and to contact Sotheby's prior to the sale to discuss any specific shipping requirements.

Please refer to VAT information for Buyers for VAT symbols used in this catalogue. Value Added Tax (VAT) may be payable on the hammer price and/or the buyer's premium. Buyer's premium may attract a charge in lieu of VAT. Please read carefully the "VAT INFORMATION FOR BUYERS" printed in this catalogue.

VAT AND OTHER TAX INFORMATION FOR BUYERS

The following paragraphs are intended to give general guidance to buyers on the VAT and certain other potential tax implications of purchasing property at Sotheby's. The information concerns the most usual circumstances and is not intended to be complete. In all cases the relevant tax legislation takes precedence and the VAT rates in effect on the day of the auction will be the rates charged except for lots sold subject to Temporary Admission for which the applicable rate will be that in force at the time of collection. It should be noted that, for VAT purposes only, Sotheby's is not usually treated as an agent and most property is sold as if it is the property of Sotheby's.

In the following paragraphs, reference to VAT symbols shall mean those symbols located beside the lot number or the pre-sale estimates in the catalogue (or amending sale room notice).

1. PROPERTY WITH NO VAT SYMBOL

Where there is no VAT symbol, Sotheby's is able to use the Auctioneer's Margin Scheme and VAT will not normally be charged on the hammer price.

Sotheby's must bear VAT on the buyer's premium and hence will charge an amount in lieu of VAT at the standard rate on this premium. This amount will form part of the buyer's premium on our invoice and will not be separately identified. A limited range of goods, including most books, are not liable to VAT and therefore no amount in lieu of VAT will be added to the premium.

Please see 'Exports from the European Union' for the conditions to be fulfilled before the amount in lieu of VAT on the buyer's premium may be cancelled or refunded.

(VAT-registered buyers from within the European Union (EU) should note that the amount in lieu of VAT contained within the buyer's premium cannot be cancelled or refunded by Sotheby's or HM Revenue and Customs.)

Buyers requiring an invoice under the normal VAT rules, instead of a margin scheme invoice, should notify the Post Sale Service Group or the Client Accounts Department on the day of the auction and an invoice with VAT on the hammer price will be raised. Buyers requiring re-invoicing under the normal VAT rules subsequent to a margin scheme invoice having been raised should contact the Client Accounts

Department for assistance.

2. PROPERTY WITH A † SYMBOL

These items will be sold under the normal UK VAT rules and VAT will be charged at the standard rate on both the hammer price and buyer's premium.

Please see 'Exports from the European Union' for the conditions to be fulfilled before the VAT charged on the hammer price may be cancelled or refunded.

(VAT-registered buyers from other EU countries may have the VAT cancelled or refunded if they provide Sotheby's with their VAT registration number and evidence that the property has been removed from the UK within three months of the date of sale. The evidence of removal required is a certificate of shipment or, if the lots were carried by hand, proof of travel and completion of a form available from the Post Sale Service Group.

3. PROPERTY WITH A α SYMBOL

Items sold to buyers whose address is in the EU will be assumed to be remaining in the EU. The property will be invoiced as if it had no VAT symbol (see 'Property with no VAT symbol' above). However, if the property is to be exported from the EU, Sotheby's will re-invoice the property under the normal VAT rules (see 'Property sold with a † symbol' above) as requested by the seller.

Items sold to buyers whose address is outside the EU will be assumed to be exported from the EU. The property will be invoiced under the normal VAT rules (see 'Property sold with a † symbol' above). Although the hammer price will be subject to VAT this will be cancelled or refunded upon export - see 'Exports from the European Union'. However, buyers who are not intending to export their property from the EU should notify our Client Accounts Department on the day of the sale and the property will be re-invoiced showing no VAT on the hammer price (see 'Property sold with no VAT symbol' above).

4. PROPERTY SOLD WITH A ‡ OR Ω SYMBOL

These items have been imported from outside the EU to be sold at auction under Temporary Admission. When Sotheby's releases such property to buyers in the UK, the buyer will become the importer and must pay Sotheby's import VAT at the following rates on the hammer price:

- ‡ - the reduced rate
- Ω - the standard rate

You should also note that the appropriate rate will be that in force on the date of collection of the property from Sotheby's and not that in force at the date of the sale.

These lots will be invoiced under the margin scheme. Sotheby's must bear VAT on the buyer's premium and hence will charge an amount in lieu of VAT at the standard rate on this premium. This amount will form part of the buyer's premium on our invoice and will not be separately identified.

(VAT-registered buyers from the EU

should note that the import VAT charged on property released in the UK cannot be cancelled or refunded by Sotheby's, however you may be able to seek repayment) by applying to HM Revenue and Customs - see 'VAT Refunds from HM Revenue and Customs')

(VAT-registered buyers from the UK should note that the invoice issued by Sotheby's for these items is not suitable evidence in respect of import VAT.)

On request, immediately after sale, the Temporary Admission Department can either ask HM Revenue and Customs to generate a C79 certificate (for UK buyers), or obtain a copy of the import C88 (for other EU VAT registered buyers), which may be used to claim recovery of the VAT. Otherwise Sotheby's may re-invoice the lot as if it had been sold with a † symbol and charge VAT at the standard rate on both the hammer price and premium and provide a tax invoice to the buyer. This may enable a buyer who is VAT registered elsewhere in the EU to avoid payment of VAT in the United Kingdom. Re-invoicing in this way may make the lot ineligible to be re-sold using the margin scheme.

Sotheby's will transfer all lots sold subject to Temporary Admission to its Customs warehouse immediately after sale.

5. EXPORTS FROM THE EUROPEAN UNION

The following amounts of VAT may be cancelled or refunded provided Sotheby's receive the appropriate export documents within the time limits stated:

Property with no VAT symbol (see paragraph 1)

The amount in lieu of VAT charged on Buyer's Premium may be refunded provided the purchaser resides outside of the United Kingdom and the property is exported from the EU within 3 months of the sale. Sotheby's must be provided with the appropriate proof of export immediately after export of the goods.

Property with a † symbol

The VAT charged upon the hammer price may be refunded provided the purchaser resides outside of the United Kingdom and the property is exported from the EU within 3 months of the sale. Sotheby's must be provided with the appropriate proof of export immediately after export of the goods.

Property with a ‡ or a Ω symbol

The Temporary Admission VAT charged on the hammer price may be refunded under the following circumstances:-

- Sotheby's is instructed to ship the property to a place outside the EU
- The property is hand carried from the UK directly outside the EU and Sotheby's pre lodge the export entry with HMRC
- The VAT liability is transferred to your shipper's own Temporary Admission or Customs Warehouse arrangement prior to collection from Sotheby's

Under all other circumstances Sotheby's is required to complete the importation and pay the VAT due to HM Revenue and Customs prior to the

property leaving its premises and so a VAT refund will not be possible.

Proof of export required

• for lots sold under the margin scheme (no VAT symbol) or the normal VAT rules († symbol), Sotheby's is provided with appropriate documentary proof of export from the EU. Buyers carrying their own property should obtain hand-carry papers from the Shipping department to facilitate this process.

• for lots sold under Temporary Admission (‡ or Ω symbols), and subsequently transferred to Sotheby's Customs Warehouse (into Bond). The property must be shipped as described above in the paragraph headed Property with a ‡ or a Ω symbol.

• buyers carrying their own property must obtain hand-carry papers from the Shipping Department for which a small administrative charge will be made. The VAT refund will be processed once the appropriate paperwork has been returned to Sotheby's.

• Sotheby's is not able to cancel or refund any VAT charged on sales made to UK or EU private residents unless the lot is subject to Temporary Admission and the property is exported from the EU and the requisite export papers provided to Sotheby's within one month of collection of the property.

• Sotheby's is not able to cancel or refund any VAT charged on sales to UK or EU private residents unless the lot is subject to Temporary Admission and is shipped as described above.

Buyers intending to export, repair, restore or alter lots sold under Temporary Admission (‡ or Ω symbols) and therefore transferred to Customs Warehouse after sale should notify the Shipping Department before collection. Failure to do so may result in the import VAT becoming payable immediately and Sotheby's being unable to refund the VAT charged on deposit.

6. VAT REFUNDS FROM HM REVENUE AND CUSTOMS

Where VAT charged cannot be cancelled or refunded by Sotheby's, it may be possible to seek repayment from HM Revenue and Customs. Repayments in this manner are limited to businesses located outside the UK.

Claim forms are available from:

HM Revenue and Customs
VAT Overseas Repayments Unit
PO Box 34, Foyle House
Duncreggan Road, Londonderry
Northern Ireland, BT48 7AE
Tel: +44 (0)2871 305100
Fax: +44 (0)2871 305101
enq.oru.ni@hmrc.gsi.gov.uk

7. SALES AND USE TAXES

Buyers should note that local sales taxes or use taxes may become payable upon import of items following purchase (for example, use tax may be due when purchased items are imported into certain states in the US). Buyers should obtain their own advice in this regard.

In the event that Sotheby's ships items

for a purchaser in this sale to a destination within a US state in which Sotheby's is registered to collect sales tax. Sotheby's is obliged to collect and remit the respective state's sales / use tax in effect on the total purchase price (including hammer price, buyer's premium, shipping costs and insurance) of such items, regardless of the country in which the purchaser resides or is a citizen. Where the purchaser has provided Sotheby's with a valid Resale Exemption Certificate prior to the release of the property, sales / use tax will not be charged. Clients who wish to provide resale or exemption documentation for their purchases should contact Post Sale Services.

Clients who wish to have their purchased lots shipped to the US by Sotheby's are advised to contact the Post Sale Manager listed in the front of this catalogue before arranging shipping.

CONDITIONS OF BUSINESS FOR BUYERS

The nature of the relationship between Sotheby's, Sellers and Bidders and the terms on which Sotheby's (as auctioneer) and Sellers contract with Bidders are set out below.

Bidders' attention is specifically drawn to Conditions 3 and 4 below, which require them to investigate lots prior to bidding and which contain specific limitations and exclusions of the legal liability of Sotheby's and Sellers. The limitations and exclusions relating to Sotheby's are consistent with its role as auctioneer of large quantities of goods of a wide variety and Bidders should pay particular attention to these Conditions.

1. INTRODUCTION

(a) Sotheby's and Sellers' contractual relationship with prospective Buyers is governed by:

- (i) these Conditions of Business;
- (ii) the Conditions of Business for Sellers displayed in the saleroom and which are available upon request from Sotheby's UK salerooms or by telephoning +44 (0)20 7293 6482;
- (iii) Sotheby's Authenticity Guarantee as printed in the sale catalogue;
- (iv) any additional notices and terms printed in the sale catalogue, including the guide to Buying at Auction; and
- (v) in respect of online bidding via the internet, the Conditions of Business for Live Online Bidding on the Sotheby's website, in each case as amended by any saleroom notice or auctioneer's announcement at the auction.

(b) As auctioneer, Sotheby's acts as agent for the Seller. A sale contract is made directly between the Seller and the Buyer. However, Sotheby's may own a lot (and in such circumstances acts in a principal capacity as Seller) and/or may have a legal, beneficial or financial interest in a lot as a secured creditor or otherwise.

2. COMMON TERMS

In these Conditions of Business:

"Bidder" is any person considering, making or attempting to make a bid, by whatever means, and includes Buyers;

"Buyer" is the person who makes the highest bid or offer accepted by the auctioneer, and includes such person's principal when bidding as agent;

"Buyer's Expenses" are any costs or expenses due to Sotheby's from the Buyer and any Artist's Resale Right levy payable in respect of the sale of the Property, including an amount in respect of any applicable VAT thereon;

"Buyer's Premium" is the commission payable by the Buyer on the Hammer Price at the rates set out in the guide to Buying at Auction plus any applicable VAT or an amount in lieu of VAT;

"Counterfeit" is as defined in Sotheby's Authenticity Guarantee;

"Hammer Price" is the highest bid accepted by the auctioneer by the fall of the hammer, (in the case of wine, as apportioned pro-rata by reference to the number of separately identified items in that lot), or in the case of a post-auction sale, the agreed sale price;

"Purchase Price" is the Hammer Price and applicable Buyer's Premium and VAT;

"Reserve" is the (confidential) minimum Hammer Price at which the Seller has agreed to sell a lot;

"Seller" is the person offering a lot for sale (including their agent (other than Sotheby's), executors or personal representatives);

"Sotheby's" means Sotheby's, the unlimited company which has its registered office at 34-35 New Bond Street, London W1A 2AA;

"Sotheby's Company" means both Sotheby's in the USA and any of its subsidiaries (including Sotheby's in London) and Sotheby's Diamonds SA and its subsidiaries (in each case "subsidiary" having the meaning of Section 1159 of the Companies Act 2006);

"VAT" is Value Added Tax at the prevailing rate. Further information is contained in the guide to Buying at Auction.

3. DUTIES OF BIDDERS AND OF SOTHEBY'S IN RESPECT OF ITEMS FOR SALE

(a) Sotheby's knowledge in relation to each lot is partially dependent on information provided to it by the Seller, and Sotheby's is not able to and does not carry out exhaustive due diligence on each lot. Bidders acknowledge this fact and accept responsibility for carrying out inspections and investigations to satisfy themselves as to the lots in which they may be interested.

(b) Each lot offered for sale at Sotheby's is available for inspection by Bidders prior to the sale. Sotheby's accepts bids on lots solely on the basis that Bidders (and independent experts on their behalf, to the extent appropriate given the nature and value of the lot and the Bidder's own expertise) have fully inspected the lot prior to bidding and have satisfied themselves as to both the condition of the

lot and the accuracy of its description.

(c) Bidders acknowledge that many lots are of an age and type which means that they are not in perfect condition. All lots are offered for sale in the condition they are in at the time of the auction (whether or not Bidders are in attendance at the auction). Condition reports may be available to assist when inspecting lots. Catalogue descriptions and condition reports may on occasions make reference to particular imperfections of a lot, but Bidders should note that lots may have other faults not expressly referred to in the catalogue or condition report. Illustrations are for identification purposes only and will not convey full information as to the actual condition of lots.

(d) Information provided to Bidders in respect of any lot, including any estimate, whether written or oral and including information in any catalogue, condition or other report, commentary or valuation, is not a representation of fact but rather is a statement of opinion genuinely held by Sotheby's. Any estimate may not be relied on as a prediction of the selling price or value of the lot and may be revised from time to time in Sotheby's absolute discretion.

(e) No representations or warranties are made by Sotheby's or the Seller as to whether any lot is subject to copyright or whether the Buyer acquires copyright in any lot.

(f) Subject to the matters referred to at 3(a) to 3(e) above and to the specific exclusions contained at Condition 4 below, Sotheby's shall exercise such reasonable care when making express statements in catalogue descriptions or condition reports as is consistent with its role as auctioneer of lots in the sale to which these Conditions relate, and in the light of:

- (i) the information provided to it by the Seller;
- (ii) scholarship and technical knowledge; and
- (iii) the generally accepted opinions of relevant experts, in each case at the time any such express statement is made.

4. EXCLUSIONS AND LIMITATIONS OF LIABILITY TO BUYERS

(a) Sotheby's shall refund the Purchase Price to the Buyer in circumstances where it deems that the lot is a Counterfeit and each of the conditions of the Authenticity Guarantee has been satisfied.

(b) In the light of the matters in Condition 3 above and subject to Conditions 4(a) and 4(e), neither any Sotheby's Company nor the Seller:

- (i) is liable for any errors or omissions in information provided to Bidders by Sotheby's (or any Sotheby's Company), whether orally or in writing, whether negligent or otherwise, except as set out in Condition 3(f) above;
- (ii) gives any guarantee or warranty to Bidders and any implied warranties and conditions are excluded (save in so far as such obligations cannot be excluded by law) other than the express warranties given by

the Seller to the Buyer in Condition 2 of the Sellers' Conditions of Business;

(iii) accepts responsibility to any Bidders in respect of acts or omissions (whether negligent or otherwise) by Sotheby's in connection with the conduct of auctions or for any matter relating to the sale of any lot.

(c) Unless Sotheby's owns a lot offered for sale, it is not responsible for any breach of these conditions by the Seller.

(d) Without prejudice to Condition 4(b), any claim against Sotheby's or the Seller by a Bidder is limited to the Purchase Price with regard to that lot. Neither Sotheby's nor the Seller shall under any circumstances be liable for any consequential losses.

(e) None of this Condition 4 shall exclude or limit Sotheby's liability in respect of any fraudulent misrepresentation made by Sotheby's or the Seller, or in respect of death or personal injury caused by the negligent acts or omissions of Sotheby's or the Seller.

5. BIDDING AT AUCTION

(a) Sotheby's has absolute discretion to refuse admission to the auction. Bidders must complete a Paddle Registration Form and supply such information and references as required by Sotheby's. Bidders act as principal unless they have Sotheby's prior written consent to bid as agent for another party. Bidders are personally liable for their bid and are jointly and severally liable with their principal if bidding as agent.

(b) Sotheby's advises Bidders to attend the auction but will seek to carry out absentee written bids which are in pounds sterling and, in Sotheby's opinion, clear and received sufficiently in advance of the sale of the lot, endeavouring to ensure that the first received of identical written bids has priority.

(c) Where available, written, telephone and online bids are offered as an additional service for no extra charge, at the Bidder's risk and shall be undertaken with reasonable care subject to Sotheby's other commitments at the time of the auction; Sotheby's therefore cannot accept liability for failure to place such bids save where such failure is unreasonable. Telephone and online bids may be recorded. Online bids are made subject to the Conditions of Business for Live Online Bidding available on the Sotheby's website or upon request. The Conditions of Business for Live Online Bidding apply in relation to online bids, in addition to these Conditions of Business.

6. CONDUCT OF THE AUCTION

(a) Unless otherwise specified, all lots are offered subject to a Reserve, which shall be no higher than the low presale estimate at the time of the auction.

(b) The auctioneer has discretion at any time to refuse any bid, withdraw any lot, re-offer a lot for sale (including after the fall of the hammer) if he believes there may be error or dispute, and take such other action as he reasonably thinks fit.

(c) The auctioneer will commence and

advance the bidding at levels and in increments he considers appropriate and is entitled to place a bid or series of bids on behalf of the Seller up to the Reserve on the lot, without indicating he is doing so and whether or not other bids are placed.

(d) Subject to Condition 6(b), the contract between the Buyer and the Seller is concluded on the striking of the auctioneer's hammer, whereupon the Buyer becomes liable to pay the Purchase Price.

(e) Any post-auction sale of lots offered at auction shall incorporate these Conditions as if sold in the auction.

7. PAYMENT AND COLLECTION

(a) Unless otherwise agreed, payment of the Purchase Price for a lot and any Buyer's Expenses are due by the Buyer in pounds sterling immediately on conclusion of the auction (the "Due Date") notwithstanding any requirements for export, import or other permits for such lot.

(b) Title in a purchased lot will not pass until Sotheby's has received the Purchase Price and Buyer's Expenses for that lot in cleared funds. Sotheby's is not obliged to release a lot to the Buyer until title in the lot has passed and appropriate identification has been provided, and any earlier release does not affect the passing of title or the Buyer's unconditional obligation to pay the Purchase Price and Buyer's Expenses.

(c) The Buyer is obliged to arrange collection of purchased lots no later than thirty (30) calendar days after the date of the auction. Purchased lots are at the Buyer's risk (and therefore their sole responsibility for insurance) from the earliest of i) collection or ii) the thirty-first calendar day after the auction. Until risk passes, Sotheby's will compensate the Buyer for any loss or damage to the lot up to a maximum of the Purchase Price paid. Buyers should note that Sotheby's assumption of liability for loss or damage is subject to the exclusions set out in Condition 6 of the Conditions of Business for Sellers.

(d) For all items stored by a third party and not available for collection from Sotheby's premises, the supply of authority to release to the Buyer shall constitute collection by the Buyer.

(e) All packing and handling is at the Buyer's risk. Sotheby's will not be liable for any acts or omissions of third party packers or shippers.

(f) The Buyer of any firearm is solely responsible for obtaining all valid firearm or shotgun certificates or certificates of registration as a firearms dealer, as may be required by the regulations in force in England and Wales or Scotland (as applicable) relating to firearms or other weapons at the time of the sale, and for complying with all such regulations, whether or not notice of such is published in the Sale Catalogue. Sotheby's will not deliver a firearm to a Buyer unless the Buyer has first supplied evidence to Sotheby's satisfaction of compliance with this Condition.

8. REMEDIES FOR NON-PAYMENT

Without prejudice to any rights the Seller may have, if the Buyer without prior agreement fails to make payment for the lot within five days of the auction, Sotheby's may in its sole discretion (having informed the Seller) exercise one or more of the following remedies:

(a) store the lot at its premises or elsewhere at the Buyer's sole risk and expense;

(b) cancel the sale of the lot;

(c) set off any amounts owed to the Buyer by a Sotheby's Company against any amounts owed to Sotheby's by the Buyer in respect of the lot;

(d) apply any payments made to Sotheby's by the buyer as part of the Purchase Price and Buyer's Expenses towards that or any other lot purchased by the Buyer, or to any shortfall on the resale of any lot pursuant to paragraph (h) below, or to any damages suffered by Sotheby's as a result of breach of contract by the Buyer;

(e) reject future bids from the Buyer or render such bids subject to payment of a deposit;

(f) charge interest at 6% per annum above HSBC Bank plc Base Rate from the Due Date to the date the Purchase Price and relevant Buyer's Expenses are received in cleared funds (both before and after judgement);

(g) exercise a lien over any of the Buyer's property which is in the possession of a Sotheby's Company. Sotheby's shall inform the Buyer of the exercise of any such lien and within 14 days of such notice may arrange the sale of such property and apply the proceeds to the amount owed to Sotheby's;

(h) resell the lot by auction or private sale, with estimates and reserves at Sotheby's discretion. In the event such resale is for less than the Purchase Price and Buyer's Expenses for that lot, the Buyer will remain liable for the shortfall together with all costs incurred in such resale;

(i) commence legal proceedings to recover the Purchase Price and Buyer's Expenses for that lot, together with interest and the costs of such proceedings on a full indemnity basis; or

(j) release the name and address of the Buyer to the Seller to enable the Seller to commence legal proceedings to recover the amounts due and legal costs. Sotheby's will take reasonable steps to notify the Buyer prior to releasing such details to the Seller.

9. BIDDER'S / BUYER'S WARRANTIES

(a) The Bidder and/or Buyer is not subject to trade sanctions, embargoes or any other restriction on trade in the jurisdiction in which it does business as well as under the laws of the European Union, the laws of England and Wales, or the laws and regulations of the United States, and is not owned (nor partly owned) or controlled by such sanctioned person(s) (collectively, "Sanctioned Person(s)").

(b) Where acting as agent, the principal is not a Sanctioned Person(s) nor owned (or partly owned) or controlled by Sanctioned Person(s).

(c) The Bidder and/or Buyer undertakes that none of the Purchase Price will be funded by any Sanctioned Person(s), nor will any party involved in the transaction including financial institutions, freight forwarders or other forwarding agents or any other party be a Sanctioned Person(s) nor owned (or partly owned) or controlled by a Sanctioned Person(s), unless such activity is authorized in writing by the government authority having jurisdiction over the transaction or in applicable law or regulation.

10. FAILURE TO COLLECT PURCHASES

(a) If the Buyer pays the Purchase Price and Buyer's Expenses but fails to collect a purchased lot within thirty calendar days of the auction, the lot will be stored at the Buyer's expense (and risk) at Sotheby's or with a third party.

(b) If a purchased lot is paid for but not collected within six months of the auction, the Buyer authorises Sotheby's, having given notice to the Buyer, to arrange a resale of the item by auction or private sale, with estimates and reserves at Sotheby's discretion. The proceeds of such sale, less all costs incurred by Sotheby's, will be forfeited unless collected by the Buyer within two years of the original auction.

11. EXPORT AND PERMITS

It is the Buyer's sole responsibility to identify and obtain any necessary export, import, firearm, endangered species or other permit for the lot. Any symbols or notices in the sale catalogue reflect Sotheby's reasonable opinion at the time of cataloguing and offer Bidders general guidance only. Without prejudice to Conditions 3 and 4 above, Sotheby's and the Seller make no representations or warranties as to whether any lot is or is not subject to export or import restrictions or any embargoes. The denial of any permit or licence shall not justify cancellation or rescission of the sale contract or any delay in payment.

12. GENERAL

(a) All images and other materials produced for the auction are the copyright of Sotheby's, for use at Sotheby's discretion.

(b) Notices to Sotheby's should be in writing and addressed to the department in charge of the sale, quoting the reference number specified at the beginning of the sale catalogue. Notices to Sotheby's clients shall be addressed to the last address formally notified by them to Sotheby's.

(c) Should any provision of these Conditions of Business be held unenforceable for any reason, the remaining provisions shall remain in full force and effect.

(d) These Conditions of Business are not assignable by any Buyer without Sotheby's prior written consent, but are binding on Buyers' successors, assigns

and representatives. No act, omission or delay by Sotheby's shall be deemed a waiver or release of any of its rights.

(e) The Contracts (Rights of Third Parties) Act 1999 is excluded by these Conditions of Business and shall not apply to any contract made pursuant to them.

(f) The materials listed in Condition 1(a) above set out the entire agreement and understanding between the parties with respect to the subject matter hereof. It is agreed that, save in respect of liability for fraudulent misrepresentation, no party has entered into any contract pursuant to these terms in reliance on any representation, warranty or undertaking which is not expressly referred to in such materials.

13. DATA PROTECTION

Sotheby's will hold and process the Buyer's personal information and may share it with another Sotheby's Group company for use as described in, and in line with, Sotheby's Privacy Policy published on Sotheby's website at www.sothebys.com or available on request by email to enquiries@sothebys.com.

14. LAW AND JURISDICTION

Governing Law These Conditions of Business and all aspects of all matters, transactions or disputes to which they relate or apply (including any online bids in the sale to which these Conditions apply) shall be governed by and interpreted in accordance with English law.

Jurisdiction For the benefit of Sotheby's, all Bidders and Sellers agree that the Courts of England are to have exclusive jurisdiction to settle all disputes arising in connection with all aspects of all matters or transactions to which these Conditions of Business relate or apply. All parties agree that Sotheby's shall retain the right to bring proceedings in any court other than the Courts of England.

Service of Process All Bidders and Sellers irrevocably consent to service of process or any other documents in connection with proceedings in any court by facsimile transmission, personal service, delivery by mail or in any other manner permitted by English law, the law of the place of service or the law of the jurisdiction where proceedings are instituted, at the last address of the Buyer or Seller known to Sotheby's or any other usual address.

ADDITIONAL TERMS AND CONDITIONS FOR LIVE ONLINE BIDDING

The following terms and conditions (the "Online Terms") provide important information related to live online bidding via BIDnow, eBay, Invaluable, and any other Online Platform through which bidding is made available ("Online Platforms").

These Online Terms are in addition to and subject to the same law and our standard Conditions of Business for Sellers, Conditions of Business for Buyers, the authenticity guarantee and any other terms that are applicable to the relevant sale (together "Conditions of Business"), and are not intended in any way to replace them. By participating in this sale via any Online Platform, you acknowledge that you are bound by the Conditions of Business applicable in the relevant sale and by these additional Conditions.

1. The procedure for placing bids via any Online Platform is a one-step process; as soon as the "Bid Now" button is clicked, a bid is submitted. By placing a bid via any Online Platform, you accept and agree that bids submitted in this way are final and that you will not under any circumstances be permitted to amend or retract your bid. If a successful bid is sent to Sotheby's from your computer, phone, tablet, or any other device, you irrevocably agree to pay the full purchase price, including buyer's premium and all applicable taxes and other applicable charges.
2. If you have the leading bid, it will be indicated on the screen with the statement "Bid with you" (on BIDnow) or "You're the highest bidder" (on eBay) or "Bid with you" (on Invaluable). If a bid is placed online simultaneously with a bid placed by a bidder in the room or on the telephone (a "floor" bid), the "floor" bid generally will take precedence; the auctioneer will have the final discretion to determine the successful bidder or to reopen bidding. The auctioneer's decision is final.
3. The next bidding increment is shown on the screen for your convenience. The auctioneer has discretion to vary bidding increments for bidders in the auction room and on the telephones, but bidders using Online Platforms may not be able to place a bid in an amount other than a whole bidding increment. All bidding for this sale will be in the domestic currency of the sale location, and online bidders will not be able to see the currency conversion board that may be displayed in the auction room.
4. The record of sale kept by Sotheby's will be taken as absolute and final in all disputes. In the event of a discrepancy between any online records or messages provided to you and the record of sale kept by Sotheby's, the record of sale will govern.
5. Online bidders are responsible for making themselves aware of all sale room notices and announcements. All sale room notices will be read by the auctioneer at the beginning, where appropriate, or during the sale prior to a relevant lot being offered

for sale. Sotheby's recommends that online bidders log on at least ten minutes before the scheduled start of the auction to ensure that you have heard all announcements made by the auctioneer at the beginning of the sale.

6. Sotheby's reserves the right to refuse or revoke permission to bid via Online Platforms and to remove bidding privileges during a sale.
7. Purchase information shown in the "Account Activity" section of BIDnow, the "Purchase History" section of the "My eBay" page on eBay, and the "Account Activity" section of the "My Invaluable" page is provided for your convenience only. Successful bidders will be notified and invoiced after the sale. In the event of any discrepancy between the online purchase information and the invoice sent to you by Sotheby's following the respective sale, the invoice prevails. Terms and conditions for payment and collection of property remain the same regardless of how the winning bid was submitted.
8. Sotheby's offers online bidding as a convenience to our clients. Sotheby's will not be responsible for any errors or failures to execute bids placed via Online Platforms, including, without limitation, errors or failures caused by (i) a loss of connection to the internet or to the BIDnow, eBay, Invaluable or other Online Platform software by either Sotheby's or the client; (ii) a breakdown or problem with the BIDnow, eBay, Invaluable or other Online Platform software; or (iii) a breakdown or problem with a client's internet connection, mobile network or computer. Sotheby's is not responsible for any failure to execute an online bid or for any errors or omissions in connection therewith.
9. Live online bidding via all Online Platforms will be recorded.
10. In the event of any conflict between these Online Terms and Sotheby's Conditions of Business and Terms of Guarantee, Sotheby's Conditions of Business and Terms of Guarantee will control.
11. In the event of any conflict between these Online Terms and any term in any agreement between the User and eBay, these Online Terms will control for purposes of all Sotheby's auctions.
12. In the event of any conflict between these Online Terms and any term in any agreement between the User and Invaluable, these Online Terms will control for purposes of all Sotheby's auctions.

05/18 ONLINE_TERMS

SOTHEBY'S GREENFORD PARK STORAGE AND COLLECTION INFORMATION

Smaller items can normally be collected from New Bond Street, however large items may be sent to Sotheby's Greenford Park Fine Art Storage Facility. If you are in doubt about the location of your purchases please contact the Sale Administrator (see front of catalogue) prior to collection.

COLLECTION FROM NEW BOND STREET

Lots will be released to you or your authorised representative when full and cleared payment has been received by Sotheby's, together with settlement of any removal, interest, handling and storage charges thereon, appropriate identification has been provided and a release note has been produced by our Post Sale Service Group at New Bond Street, who are open Monday to Friday 9.00am to 5.00pm.

Any purchased lots that have not been collected within 30 days from the date of the auction will be subject to handling and storage charges at the rates set out below. In addition all purchased lots that have not been collected from our New Bond Street premises within 90 days of the auction will be transferred to Sotheby's Greenford Park Fine Art Storage Facility.

Collect your property from:
Sotheby's Property Collection

Opening hours:
Monday to Friday 9.00am to 5.00pm
34-35 New Bond Street
London, W1A 2AA
Tel: +44 (0)20 7293 5358
Fax: +44 (0)20 7293 5933

COLLECTION FROM SOTHEBY'S GREENFORD PARK FINE ART STORAGE FACILITY

Lots will be released to you or your authorised representative when full and cleared payment has been received by Sotheby's, together with settlement of any removal, interest, handling and storage charges thereon, appropriate identification has been provided and a release note has been produced by our Post Sale Service Group at New Bond Street, who are open Monday to Friday 9.00am to 5.00pm.

Purchasers must ensure that their payment has been cleared prior to collection and that a release note has been forwarded to Sotheby's Greenford Park by our Post Sale Service Group at Sotheby's New Bond Street. Buyers who have established credit arrangements with Sotheby's may collect purchases prior to payment, although a release note is still required from our Post Sale Service Group as above.

Any purchased lots that have not been collected within 30 days from the date of the auction will be subject to handling and storage charges at the rates set out below.

Collect your property from: **Sotheby's Greenford Park Fine Art Storage Facility**

Opening hours:
Monday to Friday 8.30am to 4.30pm
Sotheby's Greenford Park,
13 Ockham Drive, Greenford, Middlesex,
UB6 0FD
Tel: +44 (0)20 7293 5600
Fax: +44 (0)20 7293 5625

ROUTE GUIDANCE TO SOTHEBY'S GREENFORD PARK FINE ART STORAGE FACILITY

From Bond Street head towards Regents Park, take the A40 Marylebone Road to Western Avenue. Take the exit off the A40 signposted Greenford A4127. At the roundabout take the third exit signposted Harrow and Sudbury, A4127 onto

Greenford Road. Go under the railway bridge and at the traffic lights turn first left into Rockware Avenue. At the T Junction turn right onto Oldfield Lane North and then left into Ockham Drive. Stop at the security barrier and say you are visiting Sotheby's. Once cleared, travel 300 yards down the road and Unit 13 is situated on the left hand side.

STORAGE CHARGES

Any purchased lots that have not been collected within 30 days from the date of the auction will be subject to handling and storage charges at the following rates:

Small items (such as jewellery, watches, books or ceramics): handling fee of £20 per lot plus storage charges of £2 per lot per day.

Medium items (such as most paintings or small items of furniture): handling fee of £30 per lot plus storage charges of £4 per lot per day.

Large items (items that cannot be lifted or moved by one person alone): handling fee of £40 per lot plus storage charges of £8 per lot per day.

Oversized items (such as monumental sculptures): handling fee of £80 per lot plus storage charges of £10 per lot per day.

A lot's size will be determined by Sotheby's on a case by case basis (typical examples given above are for illustration purposes only).

All charges are subject to VAT, where applicable. All charges are payable to Sotheby's at our Post Sale Service Group in New Bond Street.

Storage charges will cease for purchased lots which are shipped through Sotheby's Shipping Logistics from the date on which we have received a signed quote acceptance from you.

LIABILITY FOR LOSS OR DAMAGE

Buyers are reminded that Sotheby's accepts liability for loss or damage to lots for a maximum period of thirty (30) calendar days after the date of the auction. Please refer to Condition 7 of the Conditions of Business for Buyers.

SOTHEBY'S AUTHENTICITY GUARANTEE

In respect of fine Chinese paintings, the artists' names recorded in this catalogue (if any) are not to be taken as unqualified attributions to the artists named. No unqualified attributions to any artist or date are made or intended. The current scholarship in the field of Chinese paintings does not permit unqualified statements as to authorship or date of execution. Therefore, none of the fine Chinese paintings in this catalogue (if any) are subject to any guarantee of authenticity and all such property is sold as is in accordance with the Conditions of Business. Any assistance given by Sotheby's staff to a buyer in selecting a purchase is given without prejudice to the above. Buyers are recommended to take independent professional advice on selection of purchases.

Notwithstanding the above, if Sotheby's sells an item which subsequently is shown to be a "counterfeit", subject to the terms below Sotheby's will set aside the sale and refund to the Buyer the total amount paid by the Buyer to Sotheby's for the item, in the currency of the original sale.

For these purposes, "counterfeit" means a lot that in Sotheby's reasonable opinion is an imitation created to deceive as to authorship, origin, date, age, period, culture or source, where the correct description of such matters is not reflected by the description in the catalogue (taking into account any Glossary of Terms). No lot shall be considered a counterfeit by reason only of any damage and/or restoration and/or modification work of any kind (including repainting or over-painting). Please note that this Guarantee does not apply if either:-

- (i) the catalogue description was in accordance with the generally accepted opinion(s) of scholar(s) and expert(s) at the date of the sale, or the catalogue description indicated that there was a conflict of such opinions; or
- (ii) the only method of establishing at the date of the sale that the item was a counterfeit would have been by means of processes not then generally available or accepted, unreasonably expensive or impractical to use; or likely to have caused damage to the lot or likely (in Sotheby's reasonable opinion) to have caused loss of value to the lot; or
- (iii) there has been no material loss in value of the lot from its value had it been in accordance with its description.

This Guarantee is provided for a period of five (5) years after the date of the relevant auction, is solely for the benefit of the Buyer and may not be transferred to any third party. To be able to claim under this Guarantee, the Buyer must:-

- (i) notify Sotheby's in writing within three (3) months of receiving any information that causes the Buyer to question the authenticity or attribution of the item, specifying the lot number, date of the auction at which it was purchased and the reasons why it is thought to be counterfeit; and
- (ii) return the item to Sotheby's in the same condition as at the date of sale to the Buyer and be able to transfer good title in the item, free from any third party claims arising after the date of the sale.

Sotheby's has discretion to waive any of the above requirements. Sotheby's may require the Buyer to obtain at the Buyer's cost the reports of two independent and recognised experts in the field, mutually acceptable to Sotheby's and the Buyer. Sotheby's shall not be bound by any reports produced by the Buyer, and reserves the right to seek additional expert advice at its own expense. In the event Sotheby's decides to rescind the sale under this Guarantee, it may refund to the Buyer the reasonable costs of up to two mutually approved independent expert reports.

4/13 NBS_GUARANTEE CHINESE

IMPORTANT NOTICES

ESTIMATES IN US & HK DOLLARS

As a guide to potential buyers, estimates for this sale are also shown in US & HK Dollars. The estimates printed in the catalogue in Pounds Sterling have been converted at the following rate, which was current at the time of printing. These estimates may have been rounded:

£1 = US\$1.3269 £1 = HK\$10.41196

By the date of the sale this rate is likely to have changed, and buyers are recommended to check before bidding.

During the sale Sotheby's may provide a screen to show currency conversions as bidding progresses. This is intended for guidance only and all bidding will be in Pounds Sterling. Sotheby's is not responsible for any error or omissions in the operation of the currency converter.

Payment for purchases is due in Pounds Sterling, however the equivalent amount in any other currency will be accepted at the rate prevailing on the day that payment is received in cleared funds.

Settlement is made to vendors in the currency in which the sale is conducted, or in another currency on request at the rate prevailing on the day that payment is made by Sotheby's.

LIABILITY FOR LOSS OR DAMAGE FOR PURCHASED LOTS

Purchasers are requested to arrange clearance as soon as possible and are reminded that Sotheby's accepts liability for loss or damage to lots for a maximum period of thirty (30) calendar days following the date of the auction. Please refer to condition 7 of the Conditions of Business for Buyers.

COLLECTION OF LOTS MARKED 'W'

All purchased lots marked in the catalogue with a W will be transferred from the saleroom to Sotheby's Greenford Park Fine Art Storage Facility after 5 pm on the day of the sale. Collection can be made from Sotheby's Greenford Park two days after the sale, but not on the day immediately following the sale.

Exceptions to this procedure will be notified by auction room notice and announced at the time of the sale. After 30 days storage charges will commence.

Please see the Buying at Auction guide for further information.

SAFETY AT SOTHEBY'S

Sotheby's is concerned for your safety while you are on our premises and we endeavour to display items safely so far as is reasonably practicable. Nevertheless, should you handle any items on view at our premises, you do so at your own risk.

Some items can be large and/or heavy and can be dangerous if mishandled. Should you wish to view or inspect any items more closely please ask for assistance from a member of Sotheby's staff to ensure your safety and the safety of the property on view.

Some items on view may be labelled "PLEASE DO NOT TOUCH". Should you wish to view these items you must ask for assistance from a member of Sotheby's

staff who will be pleased to assist you. Thank you for your co-operation.

ENDANGERED & OTHER PROTECTED SPECIES

Please refer to the Buying at Auction section in the printed catalogue for information regarding export outside the EU. Your attention is also drawn to Condition 10 of the Conditions of Business for Buyers.

04/13 NBS_NOTICE CHINESE US\$

GLOSSARY OF TERMS

The following are examples of the terminology used in this catalogue. Please note that all statements are made subject to the provisions of the Authenticity Guarantee and the Conditions of Business for Buyers.

- 1 When a piece is in our opinion of a certain period, reign or dynasty, this attribution appears in bold type, directly below the heading of the catalogue entry for every lot e.g. A blue and white dish in our opinion of the Jiajing period of the Ming dynasty is catalogued as: **A BLUE AND WHITE DISH MING DYNASTY, JIAJING (1522 -1566)**
- 2 No firm attribution to a period is intended by any work in a description not confirmed by an attribution in bold type after the heading of the lot.
- 3 Where attribution is given in the heading for a lot and there is more than one piece in the lot, all the pieces in the lot belong in our opinion to the period in bold unless specifically stated to be otherwise.
- 4 Where no attribution is given to a piece, it is of doubtful period in our opinion or of 19th or 20th century date.

GLOSSARY FOR CHINESE WOOD

With respect to Asian hardwoods, the terms 'Huanghuali', 'Huali' 'Hongmu' 'Zitan' and others appearing within single quotes in bold or capital letters in the heading are descriptive identifications based on appearance, and are not intended to denote a specific species.

Notwithstanding the above, if within five years of the sale of any lot, the buyer gives written notice to Sotheby's that the lot sold is a forgery and if within three months after giving such notice, the buyer returns the lot in the same Condition as it was at the time of sale to the premises of Sotheby's and demonstrates to the satisfaction of Sotheby's that the lot sold is a forgery, Sotheby's is authorized to and will rescind the sale and refund the purchase price received by it. For this purpose a 'forgery' is defined as a work created with intent to deceive.

04/17 NBS_GLOS_CHINESE



In recognition of the high standards of business administration and our compliance with all required customs protocols and procedures, Sotheby's UK has been awarded the European Union Authorised Economic Operator status by Her Majesty's Revenue and Customs.



Sotheby's UK is committed to improving its sustainability, conserving resources and reducing the environmental impact of its various operations. A copy of Sotheby's Environmental Policy is available on request. Main Enquiries: +44 (0)20 7293 5000.

Photography
Rick Jenkins
Amanda Harvey
Catalogue Designer
Antonella Banfi
Colour Editor
Steve Curley
Production Controller
David Mountain

CHRONOLOGY 中國歷代年表

新石器時代	NEOLITHIC	10th-early 1st millennium BC
商	SHANG DYNASTY	16th century - c.1050 BC
周	ZHOU DYNASTY	c.1050 - 221 BC
西周	Western Zhou	c.1050 - 771 BC
東周	Eastern Zhou	770 - 256 BC
春秋	Spring and Autumn	770 - 476 BC
戰國	Warring States	475 - 221 BC
秦	QIN DYNASTY	221 - 206 BC
漢	HAN DYNASTY	206 BC - AD 220
西漢	Western Han	206 BC - AD 9
東漢	Eastern Han	AD 25 - 220
三國	THREE KINGDOMS	220 - 265
晉	JIN DYNASTY	265 - 420
西晉	Western Jin	265 - 316
東晉	Eastern Jin	317 - 420
南北朝	SOUTHERN AND NORTHERN DYNASTIES	420 - 589
宋	Song	420 - 479
齊	Qi	479 - 502
梁	Liang	502 - 557
陳	Chen	557 - 589
北魏	Northern Wei	386 - 534
東魏	Eastern Wei	534 - 550
西魏	Western Wei	535 - 557
北齊	Northern Qi	550 - 577
北周	Northern Zhou	557 - 581
隋	SUI DYNASTY	581 - 618
唐	TANG DYNASTY	618 - 907
五代	FIVE DYNASTIES	907 - 960
遼	LIAO DYNASTY	907 - 1125
宋	SONG DYNASTY	960 - 1279
北宋	Northern Song	960 - 1127
南宋	Southern Song	1127 - 1279
夏	XIA DYNASTY	1038 - 1227
金	JIN DYNASTY	1115 - 1234
元	YUAN DYNASTY	1279 - 1368
明	MING DYNASTY	1368 - 1644
洪武	Hongwu	1368 - 1398
永樂	Yongle	1403 - 1424
宣德	Xuande	1426 - 1435
正統	Zhengtong	1436 - 1449
景泰	Jingtai	1450 - 1456
天順	Tianshun	1457 - 1464
成化	Chenghua	1465 - 1487
弘治	Hongzhi	1488 - 1505
正德	Zhengde	1506 - 1521
嘉靖	Jiajing	1522 - 1566
隆慶	Longqing	1567 - 1572
萬曆	Wanli	1573 - 1620
天啟	Tianqi	1621 - 1627
崇禎	Chongzhen	1628 - 1644
清	QING DYNASTY	1644 - 1911
順治	Shunzhi	1644 - 1661
康熙	Kangxi	1662 - 1722
雍正	Yongzheng	1723 - 1735
乾隆	Qianlong	1736 - 1795
嘉慶	Jiaqing	1796 - 1820
道光	Daoguang	1821 - 1850
咸豐	Xianfeng	1851 - 1861
同治	Tongzhi	1862 - 1874
光緒	Guangxu	1875 - 1908
宣統	Xuanton	1909 - 1911
中華民國	REPUBLIC OF CHINA	1912 -
洪憲	Hongxian	1915 - 1916
中華人民共和國	PEOPLE'S REPUBLIC OF CHINA	1949 -

International Departments

For a full listing of our offices and salerooms worldwide with detailed information on all of Sotheby's services, visit sothebys.com

INTERNATIONAL CHINESE CERAMICS AND WORKS OF ART DEPARTMENTS

Worldwide Head and Chairman

Nicolas Chow
+852 2822 8123

Chairman, Asian Art, Europe and Americas

Henry Howard-Sneyd
+44 20 7293 5530

International Specialists

Julian King
Carrie Li
+852 2822 8128

Senior Specialist, Europe

Dr. Caroline Schulten
+33 1 5305 5242

International Research

Regina Krahl ±
Jungeun Lee
Isabella Tedeschi
+44 20 7293 5879

New York

Angela McAteer
Christina Prescott-Walker
Mee-Seen Loong ‡
Phyllis Kao
Hang Yin
Hannah Thompson
Justin Cheung
+1 212 606 7332

London

Stephen Loakes
Cherrei Tian
Gordon Lo
+44 20 7293 6442

Paris

Dr. Caroline Schulten
Olivier Valmier
+33 1 5305 5242

Hong Kong

Nicolas Chow
Sam Shum
Christian Bouvet
Amethyst Chau
Vivian Tong
Carmen Li
Cristine Li
+852 2822 8128

Beijing

Peter Song
+86 10 8532 2323

Taipei

Ching Yi Huang
+886 2 2757 6689

Tokyo

Mizuka Seya
+81 3 3230 2755

INTERNATIONAL CHINESE PAINTINGS DEPARTMENTS

New York

Classical Chinese Paintings
Xian Fang
Tianhan Gao
+1 212 894 1177

Hong Kong

Classical Chinese Paintings
Steven Zuo
Rongde Zhang*
Sally Fong
Alex Weng
+852 2822 9013

Hong Kong

Chinese Paintings
Carmen Ip
C.K. Cheung ‡
Jing Jing Qiao
Annie Wong
+852 2822 8132

INTERNATIONAL INDIAN, HIMALAYAN AND SOUTHEAST ASIAN DEPARTMENTS

International Head

Yamini Mehta
+44 207 293 5940

New York

Works of Art
Anuradha Ghosh-Mazumdar
+1 212 606 7304

Modern & Contemporary Art

Anuradha Ghosh-Mazumdar
Manjari Sihare-Sutin
+1 212 606 7304

London

Middle East and Islamic Art
Edward Gibbs, Chairman
Benedict Carter
Alexandra Roy
Marcus Fraser ±
+44 20 7293 5112

Indian Art

Yamini Mehta
Ishrat Kanga
+44 20 7293 5940

Mumbai

Shivajirao Gaekwar
+91 66 6665 3789

Paris

Dr. Caroline Schulten
+33 1 5305 5242

Singapore

Mok Kim Chuan
Rishika Assomull
Michelle Yaw
+65 6732 8239

Hong Kong

Mok Kim Chuan
+852 2822 8167

Taipei

Claire Liao
+886 2 2757 6689

Consultant ‡

Based in New York*

LIAISON OFFICES

Bangkok

Wannida Saetio
+66 2286 0788

Beijing

Peter Song
Ying Wang
+86 10 6408 8771

Brussels

Marianna Lora
+32 2 627 71 98

Geneva

Sebastian Maret
+41 22 908 48 00

Jakarta

Jasmine Prasetyo
+62 21 5797 3603

Kuala Lumpur

Walter Cheah ±
+60 3 2070 0319

Mumbai

Gaurav Bhatia
+91 22 6665 3407

Philippines

Angela Hsu ±
+63 917 815 0075

Shanghai

Rachel Shen
+86 21 6288 7500

Singapore

Esther Seet
+65 6732 8239

Taipei

Wendy Lin
Shuni Li
+886 2 2757 6689

Tokyo

Mizuka Seya
+81 3 3230 2755

Toronto

Lucila Portoraro
+41 69 261 774

FORTHCOMING AUCTIONS

A comprehensive calendar of international auctions, in addition to all sale results, can be viewed at sothebys.com

ARTS D'ASIE

11 June 2019
Paris

Notes

BOARD OF DIRECTORS

Domenico De Sole

Chairman of the Board

The Duke of Devonshire

Deputy Chairman of the Board

Tad Smith

President and**Chief Executive Officer**

Jessica Bibliowicz

Linus W. L. Cheung

Kevin Conroy

Daniel S. Loeb

Marsha E. Simms

Diana L. Taylor

Dennis M. Weibling

Harry J. Wilson

David Schwartz

Corporate Secretary**SOTHEBY'S EXECUTIVE
MANAGEMENT**

Jill Bright

Human Resources**& Administration****Worldwide**

Amy Cappellazzo

Chairman**Fine Art Division**

Valentino D. Carlotti

Business Development**Worldwide**

John Cahill

Chief Commercial Officer**Worldwide**

Kevin Ching

Chief Executive Officer**Asia**

Ken Citron

Operations & Chief**Transformation Officer****Worldwide**

Lauren Gioia

Communications**Worldwide**

David Goodman

Digital Development**& Marketing****Worldwide**

Mike Goss

Chief Financial Officer

Jane Levine

Chief Compliance Counsel**Worldwide**

Laurence Nicolas

Managing Director**Jewelry & Watches****Worldwide**

Jonathan Olsoff

General Counsel**Worldwide**

Jan Prasens

Managing Director**Europe, Middle East, Russia,****India and Africa**

Allan Schwartzman

Chairman**Fine Art Division**

Patti Wong

Chairman**Asia****SOTHEBY'S INTERNATIONAL
COUNCIL**

Robin Woodhead

Chairman

Jean Fritts

Deputy Chairman

John Marion

Honorary Chairman

Juan Abelló

Judy Hart Angelo

Anna Catharina Astrup

Nicolas Berggruen

Philippe Bertherat

Lavinia Borromeo

Dr. Alice Y.T. Cheng

Laura M. Cha

Halit Cingilloğlu

Jasper Conran

Henry Cornell

Quinten Dreesmann

Ulla Dreyfus-Best

Jean Marc Etlin

Tania Fares

Comte Serge de Ganay

Ann Getty

Yassmin Ghandehari

Charles de Gunzburg

Ronnie F. Heyman

Shalini Hinduja

Pansy Ho

Prince Aamyn Aga Khan

Catherine Lagrange

Edward Lee

Jean-Claude Marian

Batia Ofer

Georg von Opel

Marchesa Laudomia Pucci Castellano

David Ross

Patrizia Memmo Ruspoli

Rolf Sachs

René H. Scharf

Biggi Schuler-Voith

Judith Taubman

Olivier Widmaier Picasso

The Hon. Hilary M. Weston,

CM, CVO, OOnt

CHAIRMAN'S OFFICE**AMERICAS**

Lisa Dennison

Benjamin Doller

George Wachter

Thomas Bompard

Lulu Creel

Nina del Rio

Mari-Claudia Jimenez

Brooke Lampley

Gary Schuler

Simon Shaw

Lucian Simmons

August Uribe

EUROPE

Oliver Barker

Helena Newman

Mario Tavella

Alex Bell

Michael Berger-Sandhofer

David Bennett

Lord Dalmeny

Claudia Dwek

Edward Gibbs

George Gordon

Franka Haiderer

Henry Howard-Sneyd

Caroline Lang

Cedric Lienart

Daniela Mascetti

Wendy Phillips

Lord Poltimore

Samuel Valette

Albertine Verlinde

Roxane Zand

ASIA

Patti Wong

Nicolas Chow

Lisa Chow

Jen Hua

Yasuaki Ishizaka

Wendy Lin

Rachel Shen

Sotheby's EST. 1744

Collectors gather here.